



**We Welcome You to Our
First Annual Production Sale**



**Sunday • April 13th, 2014 • Noon
at the Ranch in Michie, Tennessee**



Sammy and Sherry Kiser, Owners
833 North Prather Road • Michie, TN 38357
Phone 731-239-5742
Charlie Adkins, Manager 731-439-7350
David Cagle, 731-453-5262

Welcome to the Inaugural Crazy K Ranch Production Sale. On behalf of Sammy and Sherry Kiser, and myself, we would like to formally invite you to the ranch April 13th.

From day one, our goal has been to produce the best genetics we can. As you look through the sale offering, you will find progeny out of some of the best cows in the Angus business. You will also find progeny and service from our herd sires that are used by some of the top programs in the breed. We have sorted through the whole herd to give you Crazy K's best for this first event.

One of our main tools that we use is the 50K test. This test keeps us on the cutting edge of genomically enhanced EPDs and gives you greater confidence in your purchases. We feel that the 50K takes the guess work out of selecting certain genetics. All of the females in this offering have been tested.

As 2013 passes us by, 2014 should be even better for the cattle business. With the low national herd inventory, prices have been at all-time highs. In the past year, Angus has been in very high demand and commercial cattlemen have seen record prices at the sale barns. There has never been a better time to be in the Angus business.

We look forward to seeing you at the ranch on April 13th. The Saturday evening before the sale, cattle will be on display and supper will be served. Please plan to join us for a great event.

If you have any questions, feel free to contact us anytime.

Sammy and Sherry Kiser

Charlie Adkins

crazykranch@hotmail.com
www.crazykranch.com



Schedule of Events

April 12, 2014 • 12 Noon • Bobo Angus Farm • Ardmore, AL

April 12, 2014 • 5:00 PM • Shadybrook Angus Farm • Lawrenceburg, TN

April 12, 2014 • 7:00 PM • Crazy K Pre-sale Social and Dinner • Michie, TN

April 13, 2014 • 12 Noon • Crazy K Ranch • Michie, TN



First Annual Production Sale

Sunday • April 13th, 2014 • Noon

at the Ranch in Michie, Tennessee



AUCTIONEER

Steve Dorran (403) 540-9498

PUBLICATION REPRESENTATIVES & RINGMEN

Jack Hedrick
(662) 327-3604

Delvin Heldermon
(405) 205-1116

Justin Stelzer
(817) 992-7059

Phil Stoll, *Weekly Livestock Reporter*
(817) 366-7332

SALE CONSULTANT

Tom Dalbey (404) 372-0973

Buyers unable to attend the sale may send their bids to the sale staff at any time, or call the sale day phone numbers.

UPDATES AND ANNOUNCEMENTS:

A supplemental update sheet will be available sale day with up-to-date information. All announcements made from the auction block take precedence over printed matter in this sale book.

TERMS & CONDITIONS:

Settlement expected sale day unless prior arrangements are made before the sale. All cattle sell under the terms and conditions as recommended by the American Angus Association relating to genetic defects.

PREGNANCY EXAMINATION INFORMATION:

All cattle have been pregnancy checked by a competent veterinarian and are called safe to the A.I. or pasture dates as best can be determined by advanced palpation. In respect to A.I. dates, they are not unconditionally guaranteed, other than the fact they are pregnant.

HERD HEALTH:

All cattle will be accompanied by proper health certificates for immediate shipment.

TRUCKING:

Truckers believed to be reliable will be available to assist you sale day.

INSURANCE:

Available at clerk's desk.

SALE MANAGED BY:

For information on sale cattle, please contact one of our associates:



LARRY COTTON	517-294-0777
RYAN COTTON	706-206-8361
MIKE GOTHARD	540-894-1055
JERRY CRENSHAW	703-244-4767
ZACK HILEMAN	540-460-2776
SCOTT BENNETT	434-660-7268

SALE LOCATION

833 North Prather Road • Michie, TN 38357
Map and directions are on the inside back cover.

HOTEL ACCOMODATIONS

- Holiday Inn Express Hotel & Suitesn (662) 287-1407
2106 US Hwy 72 W, Corinth, MS 38835
Approx. 16 miles from ranch
Block Reserved until April 1st
- Hampton Inn (662) 286-5949
2107 US 72, Corinth, MS 38834
Approx. 16 miles from ranch

AIRPORTS

- Memphis International Airport
2491 Winchester Rd, Memphis, TN
Approx. 104 miles from ranch
- Nashville International Airport
1 Terminal Dr., Nashville, TN
Approx. 166 miles from ranch

FOOD AND REFRESHMENTS:

Lunch will be served sale day at 11:00 AM.



Visit the *Angus Journal*® Web site, www.angusjournal.com, and view this sale book online.

References: American Angus Association®, AHIR®, AngusSource®, CAB®, Pathfinder®.
EPDs current as of 2/6/2014. Updated EPDs can be viewd online at www.angus.org.

SALE DAY PHONE

731-439-7350

VIEW/BID LIVE ON THE INTERNET:

LiveAuctions.TV

<http://www.LiveAuctions.tv>

call Brad Fahrmeier for details: 816.392.9241

Henrietta Pride 3144



**Crazy K
Henrietta
Pride 3144 /
Lot 1A**

Selling half interest with the option to double the purchase price and own full interest in Henrietta Pride 3144, the low-birth and REA prospect sired by Confidence and produced by the \$390,000 valued Henrietta Pride 643T.

1A

Crazy K Henrietta Pride 3144

Birth Date: 2-26-2013

Cow #17532134

Tattoo: 3144

Connealy Tobin
Connealy Confidence 0100
16761479 Becka Gala of Conanga 8281

#Bon View New Design 208
Delia of Conanga 667
#Connealy Thunder [RDF]
Becka Lee of Conanga 37

#Connealy Onward
Sitz Henrietta Pride 643T
+15836552 Sitz Henrietta Pride 81M

#Connealy Lead On
Altune of Conanga 6104
#Sitz Value 7097
Sitz Henrietta Pride 1370

CED		BW		WW		YW		MILK	
I+14	.05	I+0	.05	I+55	.05	I+98	.05	I+30	.05
CWT	I+39	MB	I+38	RE	I+1.21	FAT	I+.015		
SW	+46.63	SF	+42.91	SG	+34.30	SB	+90.85		

- The dam of Lots 1A and 1B was the top-selling female of the 2011 Big Event and this full sister to the growth and CW sire, Upward is featured in the joint embryo programs of Deer Valley Farm, Express Ranches and Pollard Farms. The dam of Lots 1A and 1B records a WR 2@105 and a YR 1@100 while showing an ultrasound REA ratio 52@104 with six daughters maintaining a combined WR 6@104.
- Maternal siblings to Lots 1A and 1B include: the \$270,000 valued, Henrietta 3168, the top-selling female of the 2013 Deer Valley Sale selling half interest to BoBo Angus; the \$135,000 Bases Loaded feature and Genex roster member, Significant 1769B; Henrietta 2636, the \$100,000 valued half interest selection of Wheeler Ranches through the 2013 Deer Valley Sale; the \$80,000 Henrietta Pride 1554 selected by Vintage Angus Ranch as the top-selling female of the 2012 Pollard Farms Sale; and Stetson 3704B, the exciting lead-off bull of the 2014 Grand Champion Carload at the National Western and the 2014 EXAR Bull Sale featured in the Express Ranches, BoBo Angus and ABS herd sire batteries.



EXAR Stetson 3704B /

Maternal sisters to this lead-off bull of the Express Ranches National Western Carload featured in the Express Ranches and BoBo Angus herd sire batteries sell as Lots 1A and 1B.

Henrietta Pride 2583



Sitz Henrietta Pride 643T / The \$380,000 valued donor dam of Lots 1A and 1B.

**Selling full interest in this powerful REA
bred heifer, Henrietta Pride 2583!**

1B

Crazy K Henrietta Pride 2583

Birth Date: 9-14-2012

Cow #17348607

Tattoo: 2583

#CF Right Design 1802
Summitcrest Complete 1P55 [RDF]
14850409 Summitcrest Elba 1M17

#Bon View New Design 1407
#Vision HF Blackcap 0015
#Vermilion Dateline 7078
Summitcrest Elba 1F43

#Connealy Onward
Sitz Henrietta Pride 643T
+15836552 Sitz Henrietta Pride 81M

#Connealy Lead On
Altune of Conanga 6104
#Sitz Value 7097
Sitz Henrietta Pride 1370

CED	BW	WW	YW	MILK
+3	.33	+3.0	.38	+59
.32	.33	+101	.33	+35
.24	.24	.24	.24	.24
CWT	+49	MB	+1.18	RE
SW	+40.22	SF	+44.85	\$G
			+26.60	\$B
				+91.15

- Henrietta Pride 2583 is sired by the proven source of REA, Complete 1P55, produced by the \$1 million producer featured in the joint embryo programs of Deer Valley Farm, Express Ranches and Pollard Farms, Henrietta Pride 643T.
- Full sisters to Lot 1B include: Henrietta 3156, the foundation member of the joint embryo programs of Deer Valley Farm and Sweet T Land and Cattle who produced a heifer pregnancy selected by Vintage Angus Ranch in the 2014 Bases Loaded Sale for \$11,000; Henrietta 2908, the \$35,000 feature of the 2013 Deer Valley Farms Sale selected by Carlson Cattle Company; Henrietta Pride 3004, the \$30,000 valued and second high-valued female of the 2013 Pollard Sale selling half interest to BoBo Angus; Henrietta Pride 2875 selling in the 2013 Big Event to Woodside Farms; and Henrietta Pride 2881 selling in that same offering to Lawson Farms.
- Maternal siblings to Lots 1A and 1B include: Waukomis 1539, the \$110,000 top-seller of the 2012 Pollard Farms Sale selling to Rimrock Productions; Henrietta Pride 1009, the \$60,000 top-selling bred heifer of the 2012 Pollard Farms Sale selling to 7T Farms; Henrietta 3131, the \$42,500 selection of Vintage Angus Ranch in the 2013 Deer Valley Sale; and Resistol 3710B, one of the features of the 2014 EXAR Grand Champion Carload at the National Western and the 2014 EXAR Bull Sale headlining the Express Ranches, BoBo Angus and ABS herd sire lineups.
- Bred 1/26/14 to VAR Discovery 2240.



Deer Valley Henrietta 3168 / The \$270,000 valued half interest selection of BoBo Angus in the 2013 Deer Valley Farm Sale, maternal sisters sells as Lots 1A and 1B.



EXAR Resistol 3710B / Maternal sisters to this featured Express Ranches National Western Carload member and feature of the Express Ranches and BoBo Angus herd sire batteries sell as Lots 1A and 1B.

Blackcap 3172



Deer Valley Blackcap 3172 / Lot 2

2

Deer Valley Blackcap 3172 [DDF]

Birth Date: 1-18-2013

Cow 17577045

Tattoo: 3172

#Mytty In Focus [RDF]
AAR Ten X 7008 SA
15719841 #AAR Lady Kelton 5551

#SAF Focus of ER
Mytty Countess 906
SAV Adaptor 2213
+HSAF Lady Kelton 504B

Connealy All Around
Deer Valley Blackcap 9822
+16577569 +EXAR New Design 4212

#Connealy Whitman
Entrust of Conanga 894
#+Rito 112 of 2536 Rito 616
+GAR New Design 1200

	CED		BW		WW		YW		MILK	
+10	.31	+5	.35	+62	.29	+114	.32	+31	.21	
CWT	+47	MB	+1.32	RE	+72	FAT	-.011			
SW	+47.55	SF	+61.15	SG	+54.76	SB	+119.09			

- Selling half interest in Blackcap 3172 the powerful low-birth, growth, MB and \$B female combining the Accelerated Genetics highlight, Ten X with a direct daughter of the \$220,000 valued Deer Valley Farm and Vintage Angus Ranch donor, New Design 4212 by All Around.
- The dam of Lot 2 records a BR 1@97 and a WR 1@101 while showing ultrasound ratios IMF 1@103 and REA 1@116. Maternal siblings to the dam of this powerhouse heifer include: Blackcap 03117, the female selling as Lot 27 in this offering; Blackcap 0390, the \$100,000 valued half interest selection of XL Angus as the second high-selling open cow of the 2013 Vintage Angus Ranch Sale; Blackcap 3124, the \$40,000 selection of Wheeler Ranches in the 2013 Deer Valley Farm Sale; Blackcap 0904, the \$15,500 selection of Briction Farms through the 2012 Deer Valley Sale; Blackcap 1182, the \$15,000 selection of Pollard Farms in the 2011 Deer Valley Sale; and VAR Upfront 0392, the featured member of the herd sire batteries of Vintage Angus Ranch, Deer Valley Farm, KiamichiLink Ranch and Accelerated Genetics



Deer Valley Blackcap 3124 / The \$40,000 maternal sister to the dam of Lot 2 selected by Wheeler Ranches through the 2013 Deer Valley Farm Sale.



VAR Upfront 0392 / A maternal sister to this featured Deer Valley Farm Vintage Angus Ranch, KiamichiLink Ranch and Accelerated Genetics roster member produced the prospect selling as Lot 2.

\$B Genetics



SJH Complete of 6108 1564 /
The \$100,000 valued half interest and top-selling two year old of the 2013 Vintage Angus Ranch Sale selected by Crazy K Ranch and donor dam of Lot 3.

A special heifer pregnancy from one of the new additions to the Crazy K Ranch program, Complete of 6108 1564, the \$100,000 valued top-selling two-year-old of the 2013 Vintage Angus Sale.

3

Crazy K Rita Heifer Pregnancy

Due Date: 9-24-2014

#Mytty In Focus [RDF]
AAR Ten X 7008 SA
15719841 #AAR Lady Kelton 5551

#SAF Focus of ER
Mytty Countess 906
SAV Adaptor 2213
+HSAF Lady Kelton 504B

Summitcrest Complete 1P55 [RDF]
SJH Complete of 6108 1564
+17014597 +DRMCTR 111 Rita 6108

#CF Right Design 1802
Summitcrest Elba 1M17
#+Rito 111 of 2536 Rito 616
+DRMCTR 2908s Design 2B02

	CED		BW		WW		YW		MILK	
S+9	.87	+.1	.94	+67	.92	+135	.84	+31	.55	
D-1	.32	+4.8	.38	+69	.32	+116	.35	+29	.25	
S-CWT	S-MRB	S-RE	S-Fat	D-CWT	D-MRB	D-RE	D-Fat			
+60	+1.30	+.73	-.002	+57	+1.03	+1.53	-.025			
S-SW	S-SF	S-SG	S-SB	D-SW	D-SF	D-SG	D-SB			
+60.21	+89.16	+51.33	+126.83	+47.84	+60.14	+56.81	+127.52			

- Complete of 6108 1564, the donor dam of Lot 3, currently ranks Number 13 for REA and Number 26 for \$B among non-parent females and she blends the proven REA sire Complete 1P55 with Rita 6108, the foundation donor in the HillHouse Angus and Angus Hill programs.
- The dam of Complete of 6108 1654 currently ranks Number 2 for \$B, Number 2 for WW, Number 4 for YW and Number 23 for REA among proven dams. The dam of Complete of 6108 1654 records a BR 3@98, a WR 3@116 and a YR 3@112 while showing ultrasound ratios IMF 52@102 and REA 52@103 with 10 daughters maintaining a combined WR 13@100.
- Complete of 6108 1543, a full sister to the donor dam of Lot 3 currently ranks Number 12 for REA among non-parent females. Maternal sisters to the donor dam of Lot 3 include: Rita 0J07, the Blackstone Cattle Company donor who presently ranks Number 1 for WW, Number 2 for YW and Number 4 for \$B among proven dams; Rita 8J04, the member of the Grand Bayou Farms and Wehrmann programs currently ranks Number 1 for YW, Number 2 for WW and Number 3 for \$B; Rita 747, the breed's current Number 2 \$B and Number 19 MB non-parent female; Rita 746, the present Number 11 \$B non-parent female; Rita 1132, the \$110,000 top-selling bred heifer of the record-setting 2013 BoBo Angus Sale selling to Spruce Mountain Ranch and Vintage Angus Ranch; and New Design 0545, the \$74,000 valued and top-selling female of the 2013 Blackstone Cattle Company Sale selling half interest to KiamichiLink Ranch.



DRMCTR 111 Rita 6108 / The proven REA and \$B leading dam of Complete of 6108 1564 the donor dam of Lot 3.



BoBo Rita 1132 / The \$110,000 top-selling bred heifer of the record-setting 2013 BoBo Angus Sale selected by Spruce Mountain Ranch and Vintage Angus Ranch, and maternal sister to the donor dam of Lot 3.

Barbara 2087



Maplecrest Barbara 2087 / Lot 4

4

Maplecrest Barbara 2087 [DDF]

Birth Date: 8-4-2012

Cow 17535111

Tattoo: 2087

#CRA Bextor 872 5205 608
GAR Prophet +16295688 +GAR Objective 1885

#BAR Ext Traveler 205
Cra Lady Jaye 608 498 S Easy
#SS Objective T510 0T26
GAR 1407 New Design 2232

#+GAR New Design 5050
Maplecrest Barbara A0223
+16940667 +GAR Retail Product 4594

#B/R New Design 036
GAR Precision 706
#GAR Retail Product
+GAR 1407 New Design 1852

	CED		BW		WW		YW		MILK
	+9	.29	+.6	.33	+66	.27	+118	.31	+34
CWT	+23		MB	+1.01	RE	+.74	FAT	+.028	
SW	+51.76		SF	+64.62	SG	+49.10	SB	+91.09	

Owned with Raines Farms, Seaman, OH

- Selling half interest in Barbara 2087, the powerful multi-trait bred heifer who combines the calving-ease, growth and MB feature, Prophet with a first calf heifer blending the proven Select Sires roster members New Design 5050 and Retail Product with the cornerstone member of the joint embryo programs of 2Bar, Goode Angus and Dreamcatcher Genetics, New Design 1852.
- Barbara 2087 stems from the \$60,000 Precision 2239, the longtime anchor of the Callaway Angus and Shiloh Cattle Company donor programs who was one of the high ranking MB females in the breed in her prime and a cornerstone donor with daughters serving in some of the breed's elite programs.
- Barbara 2087 is a multi-trait female and offers an opportunity to join Crazy K and Raines Farms in exploring the unlimited potential of one of the top bred heifers in the Crazy K program.
- Due 8/28/14 to VAR Reserve 1111.



Barbara 2565



Crazy K Barbara 2565 / Lot 5

Selling half interest with the option to double the purchase price and own full interest in this full sister to EXAR Upshot!

5

Crazy K Barbara 2565

Birth Date: 9-2-2012

Cow +17347386

Tattoo: 2565

#Connealy Onward

#Connealy Lead On
Altune of Conanga 6104
#Sitz Value 7097
Sitz Henrietta Pride 1370

Sitz Upward 307R
#14963730 Sitz Henrietta Pride 81M

#Isu Imaging Q 9111

#GT Expo
Summitcrest Pride 351F
#Bon View New Design 1407
Leachman BC 4410

EXAR Barbara T020
#+15932534 LCC Mc Henry Barbar MG382

CED	BW	WW	YW	MILK
+8	.33	+2.3	.37	+57
.31	.112	.33	+37	.25
CWT	MB	RE	FAT	
+60	.69	.76	.011	
SW	SF	\$G	\$B	
+36.32	+61.06	+36.98	+109.02	

- A special highlight of the first Crazy K Ranch sale is this full sister to the \$400,000 valued Express Ranches, BoBo Angus and ABS herd sire battery member, Upshot 0562B.
- Barbara 2565 is a powerful bred heifer combining the proven growth and CW leader, Upward 307R with the \$40,000 top-selling proven donor of the 2012 Big Event, Barbara T020 selected by Allison Family Trust. The Pathfinder Dam of Lot 5 records a WR 3@111 and a YR 2@110 while two daughters maintain a combined WR 4@100.
- Full sisters to Lot 5 include: Barbara 2572, the \$35,000 selection of Woodside Farms in the record-setting 2013 BoBo Angus Sale; Barbara 2068, the \$32,000 selection of Vintage Angus Ranch in the 2012 BoBo Angus Sale; the \$22,000 top-selling pregnancy of the 2011 Big Event selling to Vintage Angus Ranch; Barbara 2224 selling to XL Angus Ranch; the Brost Angus selection as the \$16,000 second high-selling pregnancy of the 2011 BoBo Angus Sale; and four embryos selling in the 2012 Bases Loaded Sale for \$2,200 each.
- Maternal sisters to Lot 5 include: Barbara 1015, the \$45,000 selection of Crazy K Ranch as the top-selling two year old of the record-setting 2013 BoBo Angus Sale and dam of Lots 6A through 6C; and Barbara 806, the featured member of the Car Don Angus program.
- Bred 1/20/14 to VAR Confirmed CKR 1269.



EXAR Upshot 0562B / A full sister to this headliner of the Express Ranches, BoBo Angus and ABS herd sire batteries sells as Lot 5.



VAR Barbara 2224 / A full sister sells as Lot 5.

Barbara Family



Crazy K
Barbara 3000 /
Lot 6A.



EXAR Barbara 1015 / The \$45,000 top-selling two year old of the record-setting 2013 BoBo Angus Sale and dam of Lots 6A through 6C.

Featuring three tremendous multi-trait donor prospects from the \$45,000 top-selling two year old of the 2013 BoBo Angus Sale, Barbara 1015 sired by the proven Accelerated Genetics roster member, Ten X and the breed's \$B and REA leader, Rito 9Q13.

6A Crazy K Barbara 3000

Birth Date: 1-1-2013

Cow 17506387

Tattoo: 3000

#Mytty In Focus [RDF]
AAR Ten X 7008 SA
15719841 #AAR Lady Kelton 5551

#SAF Focus of ER
Mytty Countess 906
SAV Adaptor 2213
+HSAF Lady Kelton 504B

+Rito 6EM3 of 4L1 Emblazon
EXAR Barbara 1015
16832601 #+EXAR Barbara T020

#+OCC Emblazon 854E
+Rita 4L1 of 2536 208
#Isu Imaging Q 9111
LCC Mc Henry Barbar MG382

	CED	BW		WW		YW		MILK	
I+11	.05	+1	.27	+63	.29	+119	.24	+29	.18
CWT	I+38	MB	I+.98	RE	I+.70	FAT	I+.034		
SW	+.40.15	SF	+.67.72	SG	+.44.73	SB	+.102.53		

6B Crazy K Barbara 4008

Birth Date: 1-18-2014

Cow Reg.No.Pdg.

Tattoo: 4008

6C Crazy K Barbara 4014

Birth Date: 1-19-2014

Cow Reg.No.Pdg.

Tattoo: 4014

#Gardens Highmark
Rito 9Q13 of Rita 5F56 GHM
+16408438 +Rita 5F56 of 1198 FD

#Summitcrest Scotch Cap 0B45
Green Garden Pride 6128 S1
#CA Future Direction 5321
+Rita 1198 of 2536 Rito 616

+Rito 6EM3 of 4L1 Emblazon
EXAR Barbara 1015
16832601 #+EXAR Barbara T020

#+OCC Emblazon 854E
+Rita 4L1 of 2536 208
#Isu Imaging Q 9111
LCC Mc Henry Barbar MG382

	CED		BW		WW		YW		MILK	
S+1	.60	+.3.6	.80	+.64	.70	+.113	.54	+.26	.27	
D+13	.37	+.1	.44	+.56	.35	+.100	.33	+.28	.27	
S-CWT	S-MRB	S-RE	S-Fat	D-CWT	D-MRB	D-RE	D-Fat			
+.64	+.1.27	+.1.68	+.025	+.16	+.65	+.67	+.070			
S-SW	S-SF	S-SG	S-SB	D-SW	D-SF	D-SG	D-SB			
+.31.52	+.58.65	+.57.96	+.132.34	+.44.71	+.45.07	+.35.90	+.66.36			

- Barbara 1015 is a direct daughter of the \$40,000 Pathfinder Dam featured in the Allison Family Trust program and is sired by the proven low-birth sire in the Express Ranches and Three Trees Ranches herd sire batteries, Rito 6EM3. The first natural daughter of the Barbara 1015 sells as Lot 6A and she records a weaning ratio of 107.
- Maternal siblings to the exciting young dam of Lots 6A through 6C include: the \$400,000 valued REA and \$B sire in the Express Ranches, BoBo Angus and ABS herd sire batteries, Upshot 0562B; Barbara

2565, the prospect selling as Lot 5; Barbara 2572, the \$35,000 selection of Woodside Farms in the record-setting 2013 BoBo Angus Sale; Barbara 2068, the \$32,000 selection of Vintage Angus Ranch in the 2012 BoBo Angus Sale; the \$22,000 top-selling pregnancy of the 2011 Big Event selling to Vintage Angus Ranch; Barbara 2224 the \$47,000 top-selling bred heifer of the 2013 Vintage Angus Ranch Sale selling to XL Angus Ranch; and Barbara 806, the featured member of the Car Don Angus program.

Lucy V105



Crazy K Lucy V105 /
Lot 7



Basin Lucy S161 / The foundation member of the Lucy family in the Riverbend Ranch program and a maternal sister sells as Lot 7.

Selling half interest with the option to double the purchase price and own full interest in one of the greatest daughters of the legendary 44 Farms, Express Ranches, SandPoint Cattle Company and Haleys Fairway donor, Lucy 3829 sired by the balanced-trait sire, Consensus 7229.

7

Crazy K Lucy V105

Birth Date: 11-28-2011

Cow +17116854

Tattoo: V105

Connealy Consensus
Connealy Consensus 7229
16447771 Blue Lilly of Conanga 16

#CA Future Direction 5321
Basin Lucy 3829
+14401027 Basin Lucy 178E

#KMK Alliance 6595 I87
Blinda of Conanga 004
#Woodhill Admiral 77K
Blue Cash of Conanga 6020

#GAR Precision 1680
CA Miss Power Fix 308
#Basin Max 602C
#Basin Lucy 855A

CED	BW	WW	YW	MILK
+5	.38	+3.2	.43	+60
.36	+103	.37	+32	.27
CWT	MB	RE	FAT	
+57	.68	.90	.029	
SW	SF	SG	SB	
+38.49	+47.02	+36.97	+107.15	

7A

Crazy K Lucy 3356

Birth Date: 10-8-2013

Cow 17704851

Tattoo: 3356

GAR Prophet
+16295688 #CRA Bextor 872 5205 608
+GAR Objective 1885

Connealy Consensus 7229
Crazy K Lucy V105
+17116854 +Basin Lucy 3829

#BAR Ext Traveler 205
Cra Lady Jaye 608 498 S Easy
#SS Objective T510 0T26
GAR 1407 New Design 2232

Connealy Consensus
Blue Lilly of Conanga 16
#CA Future Direction 5321
Basin Lucy 178E

CED	BW	WW	YW	MILK
I+9	.05	I+1.6	.05	I+119
.05	I+70	.05	I+119	.05
CWT	MB	RE	FAT	
I+44	I+1.18	.82	.038	
SW	SF	SG	SB	
+50.82	+63.84	+48.62	+111.47	

- The dam of Lot 7 was the \$390,000 valued top-selling female of a past Big Event sale and she records a BR 2@96, a WR 2@108 and a YR 1@99 while showing ultrasound ratios IMF 122@103 and REA 122@103 with 66 daughters maintaining a combined WR 124@104.
- Maternal sisters to this outstanding first calf heifer include: Lucy X814, the \$100,000 valued half interest selection of XL Angus Ranch in the 2012 Vintage Angus Ranch Sale; Lucy U902, the \$100,000 valued Riverbend Ranch and Springfield Angus donor; Lucy 0747, the \$50,000 selection of Silver Spring Farm in the record-setting 2013 BoBo Angus Sale; Lucy Z446, the \$50,000 third high-selling heifer of the 2013 Sale at 44 Farms selected by Vintage Angus Ranch; Lucy V033, the now-deceased Daltons on the Sycamore donor whose daughter Lucy 11209 is one of the top REA females in the breed today; and Lucy U1187, Lucy S161 and Lucy S817 three of the

cornerstone females in the Riverbend Ranch program.

- Other maternal sisters to this outstanding female include: Lucy X825, the \$23,000 selection of Double Creek Farms in the 2011 Sale at 44 Farms; Lucy 1295, the \$17,000 top-selling female of the 2012 Sale at 44 Farms selected by Spruce Mountain Ranch; Lucy 1513 selling to Deer Valley Farm in that offering for \$13,000; Lucy 1661, selling to Lawson Farms for \$11,000 in that event; Lucy 1763, the selection of Wilmore Angus for \$10,250 in that sale; Lucy 3829-050, the \$15,000 valued anchor of the Sundberg Farms and Seagraves Angus joint embryo programs; and Lucy 8721, the foundation member of the KiamichiLink Ranch and Vintage Angus Ranch joint embryo programs.
- Has a 10/8/13 heifer calf, Lot 7A, by GAR Prophet.
- Open and ready to flush.

Lucy Family



Lone Oaks Lucy 0080 / Lot 8



Crazy K Lucy 2126 / Lot 8B



Lone Oaks Lucy 0080

Birth Date: 8-10-2010

Cow +16991309

Tattoo: 0080

#SS Objective T510 0T26
Riverbend Cornerstone
15856117 +Rita 3B8 of 2536 BW

#SS Traveler 6807 T510
SS Miss Rita R011 7R8
#BCC Bushwacker 41-93
GAR Precision 2536

#BCC Bushwacker 41-93
Basin Lucy 1036
+15366310 +Basin Lucy 3829

#Paramont Ambush 2172
RC Anita T Bando 918903
#CA Future Direction 5321
Basin Lucy 178E

CED	BW	WW	YW	MILK
+11	.32	+1.4	.37	+60
.32	.37	.32	.93	.35
.35	.27			
CWT	MB	RE	FAT	
+21	+35	+59	+032	
SW	SF	SG	SB	
+51.52	+33.81	+27.66	+63.49	

- Lucy 0080 comes from the heart of the Crazy K donor program and blends the featured Riverbend Ranch, Daltons on the Sycamore and Basin Angus herd sire, Cornerstone with a direct daughter of the \$390,000 valued Lucy 3829 by the outcross Pathfinder Sire, Bushwacker.
- Lucy 0080 posts a WR 1@111 and a YR 1@101 while carrying ultrasound ratios IMF 1@102 and REA 1@105. The dam of Lot 8 is a featured member of the joint embryo programs of Galaxy Beef and 4M Angus and she records a BR 1@65 and a WR 1@99 while 12 daughters maintain a combined WR 15@104. Full sisters to the dam of Lot 8 include: Lucy S817, the featured donor in the Riverbend Ranch donor program; Lucy 0916 selected by Branch View Angus in the Basin Angus dispersal; and Lucy W213 selling in that event to Express Ranches.
- Progeny from the dam of Lot 8 include: Lucy 0016, the \$12,000 top-selling open heifer of the 2010 Lone Oaks Sale selected by Vintage Angus Ranch; the top and second high-selling heifer pregnancies of that offering both selling to Monarch Farms; and Lucy 0077, the third high-selling open heifer of the 2011 Lone Oaks Sale selected by Double R Bar Ranch.
- Has a 10/25/13 heifer calf, Lot 8A, by PA Power Tool 9108.
- Has a 9/24/12 heifer, Lot 8B, by Coleman Regis 904.



Crazy K Lucy 3141

Birth Date: 2-22-2013

Cow +17533335

Tattoo: 3141

Connealy Consensus 7229
EXAR Significant 1769B
+16884386 +Sitz Henrietta Pride 643T

Connealy Consensus
Blue Lilly of Conanga 16
#Connealy Onward
Sitz Henrietta Pride 81M

#BPF Special Focus 504
Basin Lucy 0215
16611141 +Basin Lucy 0T18

#Mytty In Focus [RDF]
BPF Black Cash 341
#EXAR 263C
+Basin Lucy 804N

CED	BW	WW	YW	MILK
+12	.05	+1.6	.05	+53
.05	.05	.05	.88	.05
.36	.05			
CWT	MB	RE	FAT	
+37	+72	+1.01	+003	
SW	SF	SG	SB	
+47.96	+30.87	+45.73	+99.46	

- Lucy 3141 is a low-birth and REA female sired by the \$135,000 Crazy K Ranch and Genex roster member, Significant 1769B and produced by the \$22,000 featured donor in the 2012 Spruce Mountain Ranch Sale, Lucy 0215 selected by XL Angus Ranch.
- Lucy 0215, the donor dam of Lot 9 blends the Basin Angus and ABS calving-ease sire, Special Focus with a direct daughter of the Express Ranches, Basin Angus and Southern Cattle Company donor, Lucy 804N by the one-time record-selling EXAR sire, 263C.
- Vintage Angus Ranch selected Lucy 2201, a maternal sister to Lot 9 through the 2012 Spruce Mountain Ranch Sale for \$10,000.



Crazy K Lucy 3363

Birth Date: 10-25-2013

Cow 17706097

Tattoo: 3363

#GAR Predestined
PA Power Tool 9108
+16381311 Shamrocks Beebe Queen 3095

#B/R New Design 036
#+GAR Ext 4206
#Bon View New Design 208
#Shamrock's Beebe Queen 1823

Riverbend Cornerstone
Lone Oaks Lucy 0080
+16991309 +Basin Lucy 1036

#SS Objective T510 0T26
+Rita 3B8 of 2536 BW
#BCC Bushwacker 41-93
+Basin Lucy 3829

CED	BW	WW	YW	MILK
+12	.05	+1.2	.05	+107
.05	.05	.05	.107	.05
.40	.05			
CWT	MB	RE	FAT	
+24	+78	+66	+026	
SW	SF	SG	SB	
+54.24	+50.88	+42.86	+84.22	



Crazy K Lucy 2126

Birth Date: 9-24-2012

Cow 17415043

Tattoo: 2126

#SAV Final Answer 0035 [RDF]
Coleman Regis 904
16364794 +Coleman Donna 714

#Sitz Traveler 8180
SAV Emulous 8145
#Connealy Onward
+Coleman Donna 386

Riverbend Cornerstone
Lone Oaks Lucy 0080
+16991309 +Basin Lucy 1036

#SS Objective T510 0T26
+Rita 3B8 of 2536 BW
#BCC Bushwacker 41-93
+Basin Lucy 3829

CED	BW	WW	YW	MILK
+14	.30	-.7	.33	+60
.30	.33	.30	.96	.35
.35	.16			
CWT	MB	RE	FAT	
+22	+39	+72	-.008	+22
SW	SF	SG	SB	
+49.08	+37.71	+34.23	+71.61	

- Lucy 2126 records a weaning ratio of 111 and a yearling ratio of 101 while carrying ultrasound ratios IMF 102 and REA 105.
- Bred 1/30/14 to VAR Confirmed CKR 1269.



Crazy K Lucy 3141 / Lot 9

Donna 2035



Crazy K Donna 2035 / Lot 10

Selling half interest with option to double the purchase price in Donna 2035, the direct daughter of the \$290,000 valued half interest selection of ZWT Ranch from Coleman Angus through the 2011 National Finals Sale, Donna 714 sired by the calving-ease and \$W specialist, Final Answer 0035.

10

Crazy K Donna 2035

Birth Date: 1-3-2012

Cow +17280610

Tattoo: 2035

#Sitz Traveler 8180
SAV Final Answer 0035 [RDF]
#13592905 SAV Emulous 8145

#GDAR Traveler 71
Sitz Everelda Entense 1137
#Bon View Bando 598
SAV Sky Emulous 2124

#Connealy Onward
Coleman Donna 714
+15706882 +Coleman Donna 386

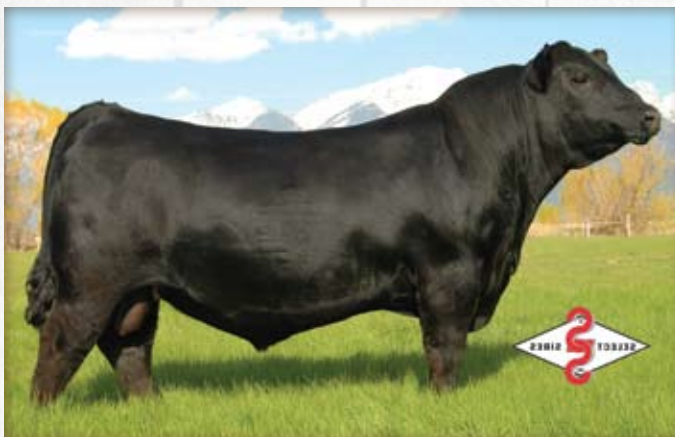
#Connealy Lead On
Altune of Conanga 6104
#Basin Rainmaker 654X
+KMK Donna J311

CED		BW		WW		YW		MILK	
I-14	.05	I-5	.05	I-58	.05	I-101	.05	I-35	.05
CWT	+14	MB	+36	RE	+41	FAT	+013		
SW	+46.48	SF	+45.37	\$G	+29.05	\$B	+56.76		

- Donna 2035 is a full sister to the calving-ease specialist in the Select Sires roster, Regis 904 and stems from one of the greatest females ever bred in the Coleman Angus program, Donna 386, the anchor of the Angus Alliance International donor program. The dam of Lot 10 records a BR 3@91, a WR 3@116 and a YR 3@112 with two daughters maintaining a combined WR 4@109.
- Full siblings to this special feature include: Regis 904, the longtime member of the Select Sires roster; Final Answer 222, the \$30,000 top-selling bull of the 2013 Coleman Angus Bull Sale selected by Lott Farms; Final Answer 224 selected by BoBo Cattle Company in that offering as the second high-selling bull of the event; and Donna 257, the \$16,000 selection of Jac's Ranch as the top-selling bred heifer of the 2013 Coleman Angus Sale.
- Maternal siblings to Lot 10 include: Juneau 044, the \$34,000 all-time high-selling Coleman Angus bull who topped the 2011 Coleman Bull Sale; Donna 1234, the \$12,000 top-selling open heifer of the 2012 Coleman Sale selling to Lott Farms and Long Cattle Company; and the \$19,000 Lineman 229, selected as the third high-selling bull of the 2013 Coleman Bull Sale by Jocko Valley Angus.
- Has a 1/23/14 heifer calf, Lot 10A, by Rito 9M25 of Rita 5F56 Pred.



Coleman Donna 714 / The \$290,000 valued donor dam of Lot 10 featured in the Coleman Angus and ZWT Ranch programs.



Coleman Regis 904 / A full sister to this Select Sires calving-ease specialist sells as Lot 10.

Royal Lass Family



**Crazy K Royal
Lass 0129 /
Lot 11**

11

Crazy K Royal Lass 0129

Birth Date: 9-19-2010

Cow 16846367

Tattoo: 0129

#SS Traveler 6807 T510
SS Objective T510 0T26
#13776378 SS Miss Rita R011 7R8

#DHD Traveler 6807
#SS Miss Hi Spade A114
SS Rito Rito R76 R011
SS Miss Ultress U56

#GAR Predestined
EXAR Royal Lass 81496
+16229064 BR Royal Lass 19-132

#B/R New Design 036
#GAR Ext 4206
#+GAR Expectation 4915
BR Royal Lass 7036-19

CED	BW	WW	YW	MILK
+15	.34	+8	.37	+56
.30	.97	.30	+24	.26
CWT	MB	RE	FAT	
+16	+1.04	.26	+0.09	
SW	SF	SG	SB	
+39.73	+41.07	+47.23	+77.12	

- Royal Lass 0129 is a low-birth and MB female sired by the longtime ABS and Quaker Hill Farm herd sire roster member, Objective and stems from a maternal sister to the dam of the record-setting Express Ranches sire, Denver 2002B sired by Predestined.
- The dam of Lot 11 balances a BR 2@97 with a YR 1@101 while showing an ultrasound IMF ratio 2@118. The dam of Lot 11 was featured in the 2013 Rock River Ranch Sale and was selected by Briction Farms as the second high selling bred cow of that offering.
- Maternal sisters to the dam of Lot 11 include: Royal Lass 1067, the feature of the Express Ranches and RO Cattle Company programs and dam of the \$1 million valued and record-selling Denver 2002B; and Royal Lass 9804, the selection of Pecan Valley Ranch in the 2012 Big Event.
- Has a 8/30/13 bull calf, Lot 11A, by Connealy Impression.
- Has a 9/21/12 heifer, Lot 11B, by Connealy Consensus 7229.
- Due 9/4/14 to VAR Confirmed CKR 1269.



EXAR Denver 2002B / A maternal sister to the dam of Lot 11 produced this record-selling Express Ranches sire featured in the Express Ranches, Innovative Genetics, Knoll Crest Farms and Basin Angus herd sire batteries.



Crazy K Royal Lass 2122 / Lot 11B

11A

Crazy K Impression 3313

Birth Date: 8-30-2013

Bull Reg.No.Pdg.

Tattoo: 3313

Connealy Reflection
Connealy Impression
15543702 Pearl Pammy of Conanga 194

#Bon View New Design 878
Happy Grill of Conanga 6260
#Vermilion Dateline 7078
Pearl Jam of Conanga 6114

#SS Objective T510 0T26
Crazy K Royal Lass 0129
16846367 +EXAR Royal Lass 81496

#SS Traveler 6807 T510
SS Miss Rita R011 7R8
#GAR Predestined
BR Royal Lass 19-132

CED	BW	WW	YW	MILK
+9	.89	+1.1	.96	+64
.15	.34	+8	.37	+56
.30	.97	.30	+24	.26
S-CWT	S-MRB	S-RE	S-Fat	D-CWT
+33	+46	+95	-.013	+16
+46.14	+48.98	+38.15	+89.10	+39.73
D-MRB	D-RE	D-Fat	D-SW	D-SF
+1.04	+26	+0.09	+41.07	+47.23
+77.12				

11B

Crazy K Royal Lass 2122

Birth Date: 9-21-2012

Cow 17415072

Tattoo: 2122

Connealy Consensus
Connealy Consensus 7229
16447771 Blue Lilly of Conanga 16

#KMK Alliance 6595 187
Blinda of Conanga 004
#Woodhill Admiral 77K
Blue Cash of Conanga 6020

#SS Objective T510 0T26
Crazy K Royal Lass 0129
16846367 +EXAR Royal Lass 81496

#SS Traveler 6807 T510
SS Miss Rita R011 7R8
#GAR Predestined
BR Royal Lass 19-132

CED	BW	WW	YW	MILK
+12	.32	+5	.34	+51
.30	.97	.30	+24	.21
CWT	MB	RE	FAT	
+22	+94	+34	+0.12	
SW	SF	SG	SB	
+40.58	+26.79	+44.80	+81.76	

- Due 8/31/14 to GAR Prophet.

Blackcap Empress 533X



44 Blackcap Empress 533X / Lot 12



Crazy K Blackcap 2150 / Lot 12A

12 44 Blackcap Empress 533X [DDF]

Birth Date: 9-8-2010

Cow #16907057

Tattoo: 533X

#Connealy Onward
Werner War Party 2417
+16004857 +BAAR USA Lady Jaye 489

#Connealy Lead On
Altune of Conanga 6104
#BAR Ext Traveler 205
Cra Lady Jaye 608 498 S Easy

#B/R Destination 727
B/R Blackcap Empress 127
13879676 #B/R Blackcap Empress 8183

#GAR Traveler 1489
B/R Ruby of Tiffany 5113
#B/R New Design 323
B/R Blackcap Empress 558

CED	BW	WW	YW	MILK
+3	.34	+4.4	.45	+64
			.37	+106
			.39	+32
				.29
CWT	+51	MB	+1.17	RE
			+1.12	FAT
				+0.021
SW	+39.29	SF	+48.98	SG
			+52.56	SB
				+119.18

- Selling half interest with the option to double the purchase price and own full interest in Blackcap Empress 533X, the full sister to the \$75,000 record-selling 44 Farms and Crazy K Ranch sire featured in the Select Sires roster, Conveyance 0X52.
- Blackcap Empress 533X is a powerful carcass and \$B female blending the growth and REA son of the Crazy K donor, Lady Jaye 489, War Party 2417 with the now-deceased herd sire producing Blackcap Empress 127 who currently ranks Number 9 for MB among proven dams.
- Blackcap Empress 533X records a WR 1@106 and a YR 1@100 while showing ultrasound ratios IMF 4@99 and REA 4@106. The dam of Lot 12 posts a WR 3@106 and a YR 3@104 while carrying ultrasound ratios IMF 79@100 and REA 79@101 with 27 daughters maintaining a combined WR 47@102.
- Maternal siblings to this powerful and productive donor include: Blackcap Empress 8459, Lot 13 in this event; the \$62,500 Empress U382, the breed's Number 15 \$B and Number 21 MB proven dam featured in the BoBo Angus and Deer Valley Farm joint embryo programs; Genesis, the proven 44 Farms herd sire and high ranking MB and \$B sire; Blackcap Empress 711, the \$42,000 top-selling donor of the 2009 Sale at 44 Farms selected by Riverbend Ranch; Blackcap Empress W733, the Bar Nun Cattle Company donor and dam of Lots 14A and 14B; and Blackcap Empress W620 selected by 714 Ranch in the 2011 Sale at 44 Farms.
- Has a 11/23/12 heifer calf, Lot 12A, by EXAR Upshot 0562B.
- Has a 10/24/12 heifer, Lot 12B, by Summitcrest Complete 1P55.
- Due 9/2/14 to EXAR Denver 2002B.

12A Crazy K Blackcap 2150

Birth Date: 11-23-2012

Cow 17401708

Tattoo: 2150

#Sitz Upward 307R
EXAR Upshot 0562B
16541214 #EXAR Barbara T020

#Connealy Onward
Sitz Henrietta Pride 81M
#Isu Imaging Q 9111
LCC Mc Henry Barbar MG382

+Werner War Party 2417
44 Blackcap Empress 533X
+16907057 B/R Blackcap Empress 127

#Connealy Onward
+BAAR USA Lady Jaye 489
#B/R Destination 727
#B/R Blackcap Empress 8183

CED	BW	WW	YW	MILK
+5	.30	+4.0	.35	+59
			.32	+107
			.35	+36
				.16
CWT	+56	MB	+1.67	RE
			+1.31	FAT
				+0.031
SW	+36.43	SF	+53.00	SG
			+41.45	SB
				+110.74

- Blackcap 2150 records a weaning ratio of 106 and a yearling ratio of 100 while showing ultrasound ratios IMF 99 and REA 113.
- Bred 1/2/14 to VAR Discovery 2240.

12B Crazy K Blackcap 2324

Birth Date: 10-24-2012

Cow +17418549

Tattoo: 2324

#CF Right Design 1802
Summitcrest Complete 1P55 [RDF]
14850409 Summitcrest Elba 1M17

#Bon View New Design 1407
#Vision HF Blackcap 0015
#Vermilion Dateline 7078
Summitcrest Elba 1F43

+Werner War Party 2417
44 Blackcap Empress 533X
+16907057 B/R Blackcap Empress 127

#Connealy Onward
+BAAR USA Lady Jaye 489
#B/R Destination 727
#B/R Blackcap Empress 8183

CED	BW	WW	YW	MILK
+2	.30	+3.5	.35	+54
			.29	+96
			.33	+34
				.23
CWT	+43	MB	+1.72	RE
			+1.29	FAT
				+0.006
SW	+31.98	SF	+40.77	SG
			+46.86	SB
				+106.72

- Blackcap 2324 posts an ultrasound REA ratio of 114.
- Due 9/23/14 to EXAR Denver 2002B.



Crazy K Blackcap 2324 / Lot 12B

Blackcap Empress Family

13 44 Blackcap Empress 8459 [AMF-DDF-NHF]
Birth Date: 10-12-2008 **Cow +16519354** **Tattoo: 8459**
 #CA Future Direction 5321 #GAR Precision 1680
 BT Crossover 758N CA Miss Power Fix 308
 +14509685 BT Royal Pride 237G #+OSU 6T6 Ultra
 BT Royal Pride 326A

#B/R Destination 727
 B/R Blackcap Empress 127
 13879676 #B/R Blackcap Empress 8183

#GAR Traveler 1489
 B/R Ruby of Tiffany 5113
 #B/R New Design 323
 B/R Blackcap Empress 558

	CED	BW	WW	YW	MILK				
+1	.34	+3.2	.40	+55	.36	+90	.37	+16	.34
CWT	+48	MB	+1.20	RE	+1.05	FAT	-.009		
\$W	+21.94	\$F	+32.44	\$G	+55.57	\$B	+118.87		

- Blackcap Empress 8459 comes from the heart of the Crazy K donor program and blends low-birth REA sire, Crossover 758N with the now-deceased herd sire producing Blackcap Empress 127 who currently ranks Number 9 for MB among proven dams.
- Blackcap Empress 8459 has one daughter posting a WR 1@106. The dam of Lot 13 records a WR 3@106 and a YR 3@104 while carrying ultrasound ratios IMF 79@100 and REA 79@101 with 27 daughters maintaining a combined WR 47@102.
- Maternal siblings to this powerful donor include: the \$75,000 Crazy K Ranch and Select Sires roster member, Conveyance 0X52; Blackcap Empress 533X, the donor selling as Lot 12; the \$62,500 Empress U382, the breed's Number 15 \$B and Number 21 MB proven dam featured in the BoBo Angus and Deer Valley Farm joint embryo programs; Genesis, the proven 44 Farms herd sire and high ranking MB and \$B sire; Blackcap Empress 711, the \$42,000 top-selling donor of the 2009 Sale at 44 Farms selected by Riverbend Ranch; and Blackcap Empress W620 selected by 714 Ranch in the 2011 Sale at 44 Farms.
- Two daughters of Blackcap Empress 8459 sell as Lots 12A and 12B sired by the REA leader, Complete 1P55.
- Open and ready to flush.

13A Crazy K Blackcap Empress3404
Birth Date: 8-30-2013 **Cow +17741039** **Tattoo: 3404**

13B Crazy K Blackcap Empress3411
Birth Date: 9-2-2013 **Cow +17741040** **Tattoo: 3411**

#CF Right Design 1802
 Summitcrest Complete 1P55 [RDF]
 14850409 Summitcrest Elba 1M17

#Bon View New Design 1407
 #+Vision HF Blackcap 0015
 #Vermilion Dateline 7078
 Summitcrest Elba 1F43

+BT Crossover 758N
 44 Blackcap Empress 8459
 +16519354 B/R Blackcap Empress 127

#CA Future Direction 5321
 BT Royal Pride 237G
 #B/R Destination 727
 #B/R Blackcap Empress 8183

	CED	BW		WW		YW		MILK	
I+1	.05	I+3.0	.05	I+54	.05	I+93	.05	I+28	.05
CWT	I+44	MB	I+.87	RE	I+1.22	FAT	I-.004		
SW	+30.87	SF	+36.83	SG	+50.68	SB	+111.22		



44 Blackcap Empress 8459 /
Lot 13



44 Blackcap Empress W733 /
 Donor dam of Lots 14A and 14B.

14A Crazy K Blackcap Empress3401
Birth Date: 8-28-2013 **Cow +17734689** **Tattoo: 3401**

14B Crazy K Blackcap Empress3414
Birth Date: 9-6-2013 **Cow +17734691** **Tattoo: 3414**

Connealy Consensus 7229
 VAR Confirmed CKR 1269
 17001883 +VAR Rita 9302

Connealy Consensus
 Blue Lilly of Conanga 16
 #+GAR New Design 5050
 GAR Objective 2345

#Connealy Onward
 44 Blackcap Empress W733
 +16656881 B/R Blackcap Empress 127

#Connealy Lead On
 Altune of Conanga 6104
 #B/R Destination 727
 #B/R Blackcap Empress 8183

* BWT Blackcap Express 6766									
	CED		BW		WW		YW		MILK
I+9	.05	I+2.3	.05	I+63	.05	I+111	.05	I+32	.05
CWT	I+47	MB	I+.96	RE	I+.90	FAT	I-.024		
SW	+38.97	SF	+56.40	SG	+50.73	SB	+114.92		

- Selling choice in two daughters of the foundation Blackcap Empress in the Bar Nun Cattle Company program, Blackcap Empress W733 sired by the featured herd sire in the Crazy K and Vintage Angus Ranch herd sire batteries, Confirmed CKR 1269.
- The donor dam of Lots 14A and 14B is a direct daughter of Blackcap Empress 127, the breed's Number 9 MB proven dam, Blackcap Empress 127 and is sired by the now-deceased growth sire, Onward. The dam of Lots 14A and 14B posts a WR 1@100 and a YR 1@100 while showing ultrasound ratios 1@100 for IMF and REA.
- Maternal siblings to the dam of Lots 14A and 14B include: the \$75,000 Crazy K Ranch and Select Sires roster member, Conveyance 0X52; Blackcap Empress 533X, the donor selling as Lot 12; the \$62,500 Empress U382, the breed's Number 15 \$B and Number 21 MB proven dam featured in the BoBo Angus and Deer Valley Farm joint embryo programs; Genesis, the proven 44 Farms herd sire and high ranking MB and \$B sire; Blackcap Empress 711, the \$42,000 top-selling donor of the 2009 Sale at 44 Farms selected by Riverbend Ranch; and Blackcap Empress 8459 the donor dam selling as Lot 13.

Blackcap Empress Family



Crazy K Blackcap 3114 /
Lot 15



Crazy K Empress 2102 /
Lot 16

15

Crazy K Blackcap 3114

Birth Date: 1-24-2013

Cow #17527751

Tattoo: 3114

44 King James 7526
B/R Blackcap Empress 470
#14671814 +Limestone Primrose T676

#SS Objective T510 OT26
+Clifton Young Lucy 3240
#GAR Predestined
+VAR Primrose 4044

#B/R Ambush 28
B/R Blackcap Empress 470
#14671814 +B/R Blackcap Empress 2244

#Rockn D Ambush 1531
+B/R Ruby of Tiffany 8250
B/R Bando 598-649
B/R Blackcap Empress 76

CED		BW		WW		YW		MILK	
I+9	.05	I+2.4	.05	I+53	.05	I+88	.05	I+23	.05
CWT	I+24	MB	I+1.04	RE	I+.88	FAT	I-.034		
SW	+30.91	SF	+30.87	SG	+56.19	SB	+95.70		

- Blackcap 3114 is an outstanding fall yearling by the featured low-birth and MB sire in the Crazy K and 44 Farms herd sire batteries, King James X005 and was produced by a Pathfinder Dam combining the MB and \$B sire, Ambush 28 with a maternal sister to New Design 036 by Bando 598-649.
- The Pathfinder Dam of Lot 15 records a WR 7@105 and a YR 5@100 while carrying an ultrasound REA ratio 16@100.



Crazy K Blackcap 3102 / Lot 17

16

Crazy K Empress 2102

Birth Date: 8-30-2012

Cow 17415094

Tattoo: 2102

Connealy Tobin
Connealy Confidence 0100
16761479 Becka Gala of Conanga 8281

#Bon View New Design 208
Delia of Conanga 667
#Connealy Thunder [RDF]
Becka Lee of Conanga 37

#SS Objective T510 OT26
Crazy K Empress 0037
+16848125 #B/R Blackcap Empress 470

#SS Traveler 6807 T510
SS Miss Rita R011 7R8
#B/R Ambush 28
+B/R Blackcap Empress 2244

Genetic Improvement of the Dairy Cow									
CED		BW		WW		YW		MILK	
+9	.30	+1.2	.34	+53	.33	+94	.36	+25	.15
CWT	+18	MB	+63	RE	+95	FAT	-.008		
SW	+38.44	SF	+38.64	SG	+45.62	SB	+77.91		

- Empress 2102 is an outstanding balanced-trait bred heifer blending the calving-ease specialist, Confidence 0100 with a direct daughter of the Crazy K Pathfinder Dam, Blackcap Empress 470 by Objective.
- Empress 2102 was produced by a first calf heifer and posts a weaning ratio of 99 and carries an ultrasound REA ratio of 112. A maternal sister to the dam of Lot 16 sells as Lot 15 in this offering.
- Due 8/30/14 to EXAR Denver 2002B.

17

Crazy K Blackcap 3102 [DDF]

Birth Date: 1-14-2013

Cow 17527749

Tattoo: 3102

#Sitz Upward 307R
EXAR Upshot 0562B
16541214 #+EXAR Barbara T020

#Connealy Onward
Sitz Henrietta Pride 81M
#Isu Imaging Q 9111
LCC Mc Henry Barbar MG382

#B/R Destination 727-928
B/R Blackcap Empress 5293
+15345328 +B/R Blackcap Empress 1104

#B/R Destination 727
B/R Blackcap Empress 558
#Basin Max 602C
B/R Blackcap Empress 558

CED		BW		WW		YW		MILK	
I+7	.05	+1.8	.27	+58	.30	+105	.25	+25	.15
CWT	I+50	MB	I+.66	RE	I+.78	FAT	I+.017		
SW	+34.80	SF	+50.79	SG	+37.47	SB	+103.29		

- Blackcap 3102 is an outstanding spring yearling from the top of the Crazy K replacement females and she combines the featured Express Ranches, BoBo Angus and ABS sire, Upshot 0562B with a direct daughter of the cornerstone Blackcap Empress in the MJB Ranch program, Blackcap Empress 1104 by Destination 727-928.

Rita 3358



Werner Rita 3358 / Lot 18

18

Werner Rita 3358 [DDF-NHF]

Birth Date: 9-8-2008

Cow +16334806

Tattoo: 3358

#Emulation N Bar 5522
N Bar Emulation EXT
#10776479 N Bar Primrose 2424

#Emulation 31 [DWF-RDF]
Ankony 8F78 Lass 8F275
#Emulation 31 [DWF-RDF]
Primrose N Bar 9962

#Twin Valley Precision E161 [RDF]
Davis Rita 4001
+14677586 EF Rita 0221

#GAR Precision 1680
+WCC Blackcap C9 [RDC]
#B/R New Design 036
+GAR Precision 2168

	CED	BW	WW	YW	MILK
+6	.33	+2.1	.39	+27	.33
CWT	+23	MB	-.05	RE	+.29
SW	+16.92	SF	-.22	SG	+2.37
				FAT	+.043
				\$B	+40.90

- Rita 3358 is a tremendous member of the Crazy K Ranch donor program and she combines the legendary female sire, EXT with the now-deceased Shady Brook Angus donor, Rita 4001.
- Rita 3358 posts a WR 2@103. The dam of Lot 18 records a WR 2@120 and a YR 2@112 while carrying an ultrasound REA ratio 73@103 with 42 daughters maintaining a combined WR 80@100.
- Double R Bar Ranch selected Rita T358, a full sister to Lot 18 through the 2012 Shady Brook Angus Sale for \$8,000. Maternal siblings to Lot 18 include: Rita 1028, the \$35,000 valued and top-selling female of the 2013 Shady Brook Sale selling half interest to Spruce Mountain Ranch; Rita T254, the \$45,000 second-generation Shady Brook donor; Titan 1026, the \$30,000 half interest highlight of the 2013 Bases Loaded Sale; Rita 1404, the \$19,000 selection of Double R Bar Ranch through the historic and record-setting Soo Line Cattle Company dispersal; Rita T285 at Pine Tree Ranch; and Rita 7803 the foundation female in the Kiker Angus program.
- Due 3/19/14 to EXAR Significant 1769B.



Davis Rita 4001 / A daughter of this now-deceased Shady Brook Angus donor sells as Lot 18.



CSP Rita T358 / A full sister to Lot 18 selected by Double R Bar Ranch for \$8,000 through the 2012 Shady Brook Angus Sale.

Lady-Jaye Family



Crazy K Lady Jaye 2203 /
Lot 19A



BAAR USA Lady Jaye 489 / The
herd sire producing dam of Lots 19A through 19C
featured in the Crazy K Ranch donor program.

19A Crazy K Lady Jaye 2203

Birth Date: 8-29-2012

Cow +17526681

Tattoo: 2203

#Connealy Onward

#Connealy Lead On

Sitz Upward 307R

Altune of Conanga 6104

#14963730 Sitz Henrietta Pride 81M

#Sitz Value 7097

Sitz Henrietta Pride 1370

#BAR Ext Traveler 205

#N Bar Emulation EXT

BAAR USA Lady Jaye 489

#BAR Queen Traveler 3015

+14901682 Cra Lady Jaye 608 498 S Easy

#+GAR Sleep Easy 1009

HHF 917 Lady 975 498

CED	BW	WW	YW	MILK
+6	.34	+1.1	.38	+56
.32	+104	.35	+38	.27
CWT	MB	RE	FAT	
+47	+.82	+.57	-0.09	
SW	SF	SG	SB	
+44.70	+50.48	+42.39	+106.29	

- Lady Jaye 2203 records ultrasound ratios IMF 127 and REA 107.
- Due 9/6/14 to AAR Ten X 7008 SA.

19B Crazy K Lady Jaye 2205

Birth Date: 9-4-2012

Cow +17526680

Tattoo: 2205

#Connealy Onward

#Connealy Lead On

Sitz Upward 307R

Altune of Conanga 6104

#14963730 Sitz Henrietta Pride 81M

#Sitz Value 7097

Sitz Henrietta Pride 1370

#BAR Ext Traveler 205

#N Bar Emulation EXT

BAAR USA Lady Jaye 489

#BAR Queen Traveler 3015

+14901682 Cra Lady Jaye 608 498 S Easy

#+GAR Sleep Easy 1009

HHF 917 Lady 975 498

CED	BW	WW	YW	MILK
+9	.34	+8	.38	+55
.32	+101	.35	+40	.27
CWT	MB	RE	FAT	
+46	+.54	+.62	+0.04	
SW	SF	SG	SB	
+46.18	+46.94	+33.73	+95.93	

- Lady Jaye 2205 posts an ultrasound REA ratio of 113.
- Due 8/29/14 to AAR Ten X 7008 SA.

19C Crazy K Lady Jaye 3420

Birth Date: 9-21-2013

Cow +17741238

Tattoo: 3420

#GAR Predestined

#B/R New Design 036

PA Power Tool 9108

#+GAR Ext 4206

+16381311 Shamrocks Beebe Queen 3095

#Bon View New Design 208

#Shamrock's Beebe Queen 1823

#BAR Ext Traveler 205

#N Bar Emulation EXT

BAAR USA Lady Jaye 489

#BAR Queen Traveler 3015

+14901682 Cra Lady Jaye 608 498 S Easy

#+GAR Sleep Easy 1009

HHF 917 Lady 975 498

CED	BW	WW	YW	MILK
1+12	.05	1+.6	.05	1+101
.05	1+.57	.05	1+40	.05
CWT	MB	RE	FAT	
1+21	1+1.02	1+.57	1+.023	
SW	SF	SG	SB	
+49.17	+45.89	+48.15	+85.19	



Crazy K Lady Jaye 2205 / Lot 19B

- Featuring three daughters of the foundation member of the Lady Jaye family in the Crazy K program, Lady Jaye 489 sired by the proven growth and CW leader, Upward 307R and the MB sire, Power Tool 9108.
- Lady Jaye 489 joined the Crazy K program as the lead-off and top-selling donor of the 2011 Sale at 44 Farms and this full sister to the longtime Select Sires roster member Bextor is one of the great herd sire producers in the breed. The dam of Lots 19A through 19C records a BR 3@95, a WR 3@103 and a YR 2@101 while carrying ultrasound ratios IMF 50@103 and REA 50@101 with 15 daughters maintaining a combined WR 21@103.

- Maternal siblings to Lots 19A through 19C include: War Party 2417, the \$75,000 feature of the 44 Farms, Werner Angus, KiamichiLink Ranch and Select Sires herd sire batteries; Lady Jaye 129, the \$28,500 top-selling open heifer of the 2009 Werner Angus Sale selected by Rock River Ranch; Lady Jaye X881, the featured donor in the Daltons on the Sycamore program; Lady Jaye 7086, a feature of the Taylor Cattle dispersal selling to Hill Rise Farm; Revenue Sharing 1289, the \$21,000 top-selling bull of the 2012 44 Farms Bull Sale selling to Rolling Hills Farm; and Lady Jaye 0220, the selection of Werner Angus in the 2011 Sale at 44 Farms.

Lady-Jaye Family



Crazy K Lady Jaye 3101 /
Lot 20B



BoBo Lady Jaye 0123 /
Lot 21

20 BoBo Lady Jaye 1005 [DDF]

Birth Date: 1-2-2011

Cow #17006570

Tattoo: 1005

#Boyd New Day 8005
B/R New Day 454
+14901690 B/R Ruby 1224

#AAR New Trend
SVF Forever Lady 57D
#B/R New Design 323
+HF Ruby 036-951

#BAR Ext Traveler 205
BAAR USA Lady Jaye 4020
+14901690 Cra Lady Jaye 608 498 S Easy

#N Bar Emulation EXT
#BAR Queen Traveler 3015
#BAR Sleep Easy 1009
HHF 917 Lady 975 498

	CED		BW		WW		YW		MILK	
	+11	.32	-.1	.37	+43	.32	+78	.34	+32	.29
CWT	+22		MB	+75		RE	+76		FAT	+010
SW	+42.83		SF	+23.16		SG	+45.02		SB	+81.68

- Lady Jaye 1005 is a low-birth daughter of the REA sire featured in the 44 Farms and Select Sires roster member, New Day 454 and produced by Lady Jaye 4020, the full sister to the Select Sires balanced-trait leader, Bextor.
- Lady Jaye 1005 posts a WR 1@109. The dam of Lot 20 records a WR 3@99 and a YR 2@99 while carrying ultrasound ratios IMF 40@107 and REA 40@99 with 19 daughters maintaining a combined WR 25@100.
- The dam of Lot 20 has worked in the BoBo Angus and Deer Valley Farm donor programs and is a full sister to Lady Jaye 489, the dam of Lots 19A through 19C in this offering. Maternal sisters to Lot 20 include: Lady Jaye 0123, the female selling as Lot 21; and Lady Jaye X15, the high MB headliner of the Sundberg Farms program.
- Has a 1/25/14 heifer calf, Lot 20A, by Rito 9Q13 of Rita 5F56 GHM.
- Has a 1/11/13 heifer, Lot 20B, by EXAR Upshot 0562B.

21 BoBo Lady Jaye 0123

Birth Date: 3-6-2010

Cow #16854345

Tattoo: 0123

#N Bar Prime Time D806
Gardens Prime Star
14740749 Green Garden Jilt C242 S1

#Gardens Prime Time
N Bar Miss Emulous A404
#SS Traveler 6807 T510
Green Garden Jilt 9242 S1

#BAR Ext Traveler 205
BAAR USA Lady Jaye 4020
+14901690 Cra Lady Jaye 608 498 S Easy

#N Bar Emulation EXT
#BAR Queen Traveler 3015
#BAR Sleep Easy 1009
HHF 917 Lady 975 498

	CED		BW		WW		YW		MILK	
	I-12	.05	+1.1	.30	+37	.28	+70	.27	+23	.28
CWT	+11		MB	+1.13		RE	+20		FAT	+057
SW	+28.99		SF	+16.22		SG	+43.57		SB	+64.80

- Lady Jaye 0123 is a balanced-trait MB female from the heart of the Crazy K fall calving program and she blends the MB leader, Prime Star with the full sister to the Select Sires roster member, Bextor in the Deer Valley Farm program, Lady Jaye 4020.
- Lady Jaye 0123 records a WR 1@101. The dam of Lot 21 posts a WR 3@99 and a YR 2@99 while carrying ultrasound ratios IMF 40@107 and REA 40@99 with 19 daughters maintaining a combined WR 25@100.
- Lady Jaye X15, a full sister to Lot 21, is one of the breed's elite MB females and anchors the herd sire producing Lady Jaye family in the Sundberg Farms program, with a maternal sister selling as Lot 20.
- Has a 9/3/13 heifer calf, Lot 21A, by EXAR Significant 1769B.
- Due 9/4/14 to Rito 9Q13 of Rita 5F56 GHM.

20B Crazy K Lady Jaye 3101

Birth Date: 1-11-2013

Cow 17527748

Tattoo: 3101

#Sitz Upward 307R
EXAR Upshot 0562B
16541214 #EXAR Barbara T020

#Connealy Onward
Sitz Henrietta Pride 81M
#Isu Imaging Q 9111
LCC Mc Henry Barbar MG382

B/R New Day 454
BoBo Lady Jaye 1005
+17006570 +BAAR USA Lady Jaye 4020

#Boyd New Day 8005
B/R Ruby 1224
#BAR Ext Traveler 205
Cra Lady Jaye 608 498 S Easy

	CED		BW		WW		YW		MILK	
	I-11	.05	+1.3	.24	+54	.28	+99	.24	+34	.13
CWT	I-42		MB	I-66		RE	I-1.04		FAT	I-014
SW	+38.52		SF	+44.77		SG	+42.05		SB	+101.28

- Lady Jaye 3101 posts a weaning ratio of 109.

21A Crazy K Lady Jaye 3325

Birth Date: 9-3-2013

Cow 17705007

Tattoo: 3325

Connealy Consensus 7229
EXAR Significant 1769B
+16884386 +Sitz Henrietta Pride 643T

Connealy Consensus
Blue Lilly of Conanga 16
#Connealy Onward
Sitz Henrietta Pride 81M

Gardens Prime Star
BoBo Lady Jaye 0123
+16854345 +BAAR USA Lady Jaye 4020

#N Bar Prime Time D806
Green Garden Jilt C242 S1
#BAR Ext Traveler 205
Cra Lady Jaye 608 498 S Easy

	CED		BW		WW		YW		MILK	
	N/A	N/A	I-1.7	.05	I-49	.05	I-83	.05	I-28	.05
CWT	I-29		MB	I-89		RE	I-69		FAT	I-018
SW	+34.53		SF	+26.50		SG	+46.05		SB	+91.33

Foundation Genetics

22

Crazy K Lady Jaye 2008

Birth Date: 1-30-2012

Cow 17280584

Tattoo: 2008

#CF Right Design 1802
Summitcrest Complete 1P55 [RDF]
14850409 Summitcrest Elba 1M17

#Bon View New Design 1407
#Vision HF Blackcap 0015
#Vermillion Dateline 7078
Summitcrest Elba 1F43

#BAR Ext Traveler 205
Prospect Hill Lady Jaye 539
+15029193 Cra Lady Jaye 608 498 S Easy

#N Bar Emulation EXT
#BAR Queen Traveler 3015
#+GAR Sleep Easy 1009
HHF 917 Lady 975 498

	CED	BW	WW	YW	MILK
I+8	.05	+1.1	.26	+50	.29
CWT	+25	MB	+57	RE	+77
SW	+37.31	SF	+29.81	\$G	+35.93
				\$B	+76.76

- Lady Jaye 2008 is a direct daughter of the Crazy K donor, Lady Jaye 539, the full sister to the Select Sires roster member Bextor and the foundation Crazy K donor, Lady Jaye 489 sired by the proven Deer Valley Farm REA sire, Complete 1P55.
- Lady Jaye 2008 posts a weaning ratio of 108 and a yearling ratio of 105. The dam of Lot 22 records a WR 3@107 and a YR 2@102.
- Has a 1/31/14 heifer calf, Lot 22A, by AAR Ten X 7008 SA.



Prospect Hill Lady Jaye 539 / A daughter sells as Lot 22.



EXAR Rita 2159 /
Lot 23

Rita 1197 of 2536 Rito 616 /
The breed's record-valued female and dam of Lot 23.



23

EXAR Rita 2159

Birth Date: 2-4-2012

Cow +17185885

Tattoo: 2159

#Sitz Upward 307R
EXAR Upshot 0562B
16541214 #+EXAR Barbara T020

#Connealy Onward
Sitz Henrietta Pride 81M
#Isu Imaging Q.9111
LCC Mc Henry Barbar MG382

#Rito 616 of 4820 6807
Rita 1197 of 2536 Rito 616
+13801956 GAR Precision 2536

#DHD Traveler 6807
+Rita 4820 of 0FB1 Bando
#GAR Precision 1680
+GAR Ext 2104

	CED	BW	WW	YW	MILK
+11	.34	+4	.38	+49	.32
CWT	+29	MB	+76	RE	+82
SW	+41.18	SF	+31.58	\$G	+47.22
				\$B	+92.52

- Rita 2159 is a special bred heifer that combines the proven REA and \$B headliner of the Express Ranches, BoBo Angus and ABS herd sire batteries, Upshot 0562B with the breed's record-valued donor featured in the Express Ranches, Stallion Angus Ranch and SandPoint Cattle Company joint embryo programs, Rita 1197.
- Rita 2159 posts ultrasound ratios IMF 100 and REA 100. The dam of Lot 23 records a BR 1@87 and a WR 1@107 while carrying an ultrasound IMF ratio 108@101 with 51 daughters maintaining a combined WR 108@100.
- Maternal sisters to Lot 23 include: Blackcap T106, the \$410,000 valued half interest selection of Werner Angus through the 2007 Limestone Sale; Blackcap S820, the \$110,000 second high-selling fall yearling of a past Riverbend Ranch sale selling to Monarch Farms; Rita 5M25, the \$65,000 in the Steinbronn program; Rita 48N3, the \$48,000 former Deer Valley Farm donor; and the \$30,000 Rita 6818.
- Due 8/31/14 to GAR Prophet.

Blackcap Family



**Crazy K
Blackcap 2143 /**
Lot 24

24 Crazy K Blackcap 2143

Birth Date: 2-1-2012

Cow +17226315

Tattoo: 2143

#Sitz Upward 307R

#Connealy Onward

EXAR Upshot 0562B

Sitz Henrietta Pride 81M

16541214 #EXAR Barbara T020

#Isu Imaging Q 9111

LCC Mc Henry Barbar MG382

#GDAR Traveler 044

#DHD Traveler 6807

GAR 044 Traveler 2328

#GDAR Blackcap Lady 840

+13254911 GAR Precision 2536

#GAR Precision 1680

+GAR Ext 2104

	CED	BW	WW	YW	MILK
I-8	.05	I+2.6	.05	I+44	.05
CWT	+31	MB	+43	RE	+1.06
SW	+27.28	SF	+30.22	SG	+39.89
				SB	+87.29

• Blackcap 2143 is a powerful bred heifer sired by the \$400,000 valued, Upshot 0562B and was produced by the \$280,000 matriarch of the Express Ranches Blackcap family, Traveler 2328.

• Blackcap 2143 records ultrasound ratios IMF 118 and REA 108. The dam of Lot 24 posts a WR 4@100 and a YR 4@100 while carrying an ultrasound REA ratio 76@104.

• Maternal sisters to Lot 24 include: Blackcap U1146, the \$130,000 half interest selection of Whispering Pines Ranch through the first Spruce Mountain Ranch sale; Blackcap 5879, the \$80,000 valued lead-off and top-selling female of the 2012 Spruce Mountain Sale selling half interest to BoBo Angus; Blackcap 9742, the featured donor in the joint embryo programs of Vintage Angus Ranch and Spruce Mountain Ranch; Blackcap 9672, the feature of the Rock River Ranch donor program; and the \$300,000 valued Express Ranches and A Cross Ranch donor, New Design 2082.

• Due 2/5/14 to GAR Prophet.

25 Bricton Blackcap 8263 [AMF-DDF-NHF]

Birth Date: 11-12-2008

Cow +16922050

Tattoo: 8263

#SS Traveler 6807 T510

#DHD Traveler 6807

SS Objective T510 0T26

#SS Miss Hi Spade A114

#13776378 SS Miss Rita R011 7R8

SS Rito Rito R76 R011

SS Miss Ultrass U56

#Bon View New Design 1407

#B/R New Design 036

Riverbend Blackcap R120

Bon View Pride 664

+14987935 +Rita 3B8 of 2536 BW

#BCC Bushwacker 41-93

GAR Precision 2536

	CED	BW	WW	YW	MILK
+9	.29	+1.0	.32	+52	.28
CWT	+4	MB	+69	RE	+55
SW	+40.78	SF	+35.23	SG	+45.29
				SB	+56.72

• Blackcap 8263 is a proven daughter of the longtime anchor of the Bricton Farms donor program, Blackcap R120 sired by the growth sire in the Quaker Hill Farm and ABS roster, Objective.

• Blackcap 8263 records a WR 3@107 and a YR 2@103 while carrying ultrasound ratios IMF 2@107 and REA 2@101. The dam of Lot 25 posts a WR 1@121 while showing ultrasound ratios IMF 24@101 and REA 24@100 with 14 daughters maintaining a combined WR 28@101.

• Blackcap 9052, a full sister to Lot 25, was selected by Whitestone Farms through the 2013 Bricton Sale. Progeny from the dam of Lot 25 includes: Blackcap 8254, the \$18,000 selection of Springfield Angus in the 2009 Bricton Sale; Blackcap 8173, the \$16,500 top-selling female of the 2010 Bricton Sale selling to Deer Valley Farm; Blackcap 9008, the \$10,000 selection of Riverbend Ranch in the 2010 Bricton Sale; and Blackcap 8248 in the ErReR Hill Farm and Voytus Angus programs.

• Has a 9/28/13 heifer calf, Lot 25A, by Connealy Confidence 0100.

• Due 9/27/14 to EXAR Denver 2002B.



**Bricton
Blackcap 8263 /**
Lot 25

Blackcap Family

25A

Crazy K Blackcap 3351

Birth Date: 9-28-2013

Cow 17705005

Tattoo: 3351

Connealy Tobin
Connealy Confidence 0100
+16761479 Becca Gala of Conanga 8281

#Bon View New Design 208
Delia of Conanga 667
#Connealy Thunder [RDF]
Becca Lee of Conanga 37

#SS Objective T510 OT26
Bricton Blackcap 8263
+16922050 +Riverbend Blackcap R120

#SS Traveler 6807 T510
SS Miss Rita R011 7R8
#Bon View New Design 1407
+Rita 388 of 2536 BW

	CED		BW		WW		YW		MILK
I+14	.05	I-1.1	.05	I+50	.05	I+91	.05	I+33	.05
CWT	I+12	MB	I+.62	RE	I+.88	FAT	I+.015		
SW	+44.99	SF	+36.24	SG	+43.63	SB	+67.51		



EXAR New Design 4212 / The \$220,000 valued anchor of the Deer Valley Farm and Vintage Angus Ranch joint embryo programs and dam of Lot 27.

26

SJH Objective of 7M78 0198 [DDF]

Birth Date: 12-19-2010

Cow +16848123

Tattoo: 0198

#SS Traveler 6807 T510
SS Objective T510 OT26
#13776378 SS Miss Rita R011 7R8

#DHD Traveler 6807
#SS Miss Hi Spade A114
SS Rito Rito R76 R011
SS Miss Ultress U56

#GAR Predestined
Rita 7M78 of Rita 4L1 Pred
+15798595 +Rita 4L1 of 2536 208

#B/R New Design 036
#+GAR Ext 4206
#Bon View New Design 208
GAR Precision 2536

	CED		BW		WW		YW		MILK
+7	.32	+4.1	.43	+74	.34	+123	.33	+33	.25
CWT	+23	MB	+1.95	RE	+1.67	FAT	+1.040		
SW	+52.74	SF	+67.35	SG	+45.86	SB	+87.98		

- Objective of 7M78 0198 is a growth and MB female from the heart of the Crazy K fall calving program and she blends the proven growth sire in the ABS roster, Objective with the powerful JB Turner donor, Rita 7M78.
- Objective of 7M78 1198 posts a weaning ratio of 118. The dam of Lot 26, a maternal sister to the calving-ease Express Ranches and Three Trees Ranch sire, Rito 6EM3 records a BR 2@97, a WR 2@114 and a YR 1@113 while carrying ultrasound ratios IMF 15@100 and REA 15@103 with one daughter showing a WR 1@111.
- Rita 0001, a full sister to Lot 26, was the \$50,000 feature of the 2011 BoBo Angus Sale selected by Stallion Angus Ranch. Maternal sisters to Lot 26 include: Rita 2532 selected by Friendship Farms through the record-setting 2013 BoBo Angus Sale; and Rita 2518 selling to HillHouse Angus in that same event.
- Due 8/29/14 to AAR Ten X 7008 SA.

27

Deer Valley Blackcap 03117

Birth Date: 3-30-2010

Cow +16656989

Tattoo: 03117

#SS Objective T510 OT26
GAR Ultimate
15464043 +GAR Load Up 1314

#SS Traveler 6807 T510
SS Miss Rita R011 7R8
RAB-GAR Load Up 4049J
+GAR New Design 80

#+Rito 112 of 2536 Rito 616
EXAR New Design 4212
+14215052 +GAR New Design 1200

#Rito 616 of 4B20 6807
GAR Precision 2536
#B/R New Design 036
GAR Precision 2536

	CED		BW		WW		YW		MILK
+6	.30	+2.0	.40	+55	.32	+95	.32	+28	.28
CWT	+23	MB	+1.80	RE	+1.83	FAT	+1.004		
SW	+39.36	SF	+38.94	SG	+47.46	SB	+86.46		

- Blackcap 03117 is a proven daughter of the \$100,000 Deer Valley Farm, Riverbend Ranch and Stevenson Genetics herd sire, Ultimate and was produced by the \$220,000 valued anchor of the Deer Valley Farm and Vintage Angus Ranch donor, New Design 4212.
- Blackcap 03117 posts a WR 1@107 and a YR 1@107. The dam of Lot 27 records a WR 3@108 and a YR 3@106 while carrying ultrasound ratios 42@103 for IMF and REA with 18 daughters maintaining a combined WR 27@101.
- Maternal siblings to Lot 27 include: Blackcap 9822, the powerful dam of the half interest highlight selling as Lot 2 in this offering, Blackcap 3172; Blackcap 0904, the \$15,500 feature of the 2012 Deer Valley Farm Sale selected by Bricton Farms; Blackcap 0390, the \$100,000 valued half interest selection of XL Angus Ranch as the second high-selling open cow of the 2012 Vintage Angus Ranch Sale; and VAR Upfront 0392, the featured Deer Valley Farm, Vintage Angus Ranch, KiamichiLink Ranch and Accelerated Genetics roster member.
- Has a 1/30/14 heifer calf, Lot 27A, by Rito 9M25 of Rita 5F56 Pred.



SJH Objective of 7M78 0198 / Lot 26

Blackcap 8229



44 Blackcap 8229 /
Lot 28



Crazy K Blackcap 3111 /
Lot 28A

28

44 Blackcap 8229 [DDF-NHF]

Birth Date: 9-1-2008

Cow +16211119

Tattoo: 8229

#N Bar Prime Time D806
Gardens Prime Star
14740749 Green Garden Jilt C242 S1

#Gardens Prime Time
N Bar Miss Emulous A404
#SS Traveler 6807 T510
Green Garden Jilt 9242 S1

#Bon View New Design 1407
EXAR Blackcap 5333
+14930623 +VAR Blackcap N06

#B/R New Design 036
Bon View Pride 664
#CA Future Direction 5321
+GAR Ext 2114

CED		BW		WW		YW		MILK	
+8	.29	+1.9	.38	+50	.32	+84	.32	+33	.31
CWT	+23	MB	+1.27	RE	+58	FAT	+0.26		
\$W	+39.48	\$F	+27.27	\$G	+52.49	\$B	+90.59		

- Blackcap 8229 is a proven MB female from the heart of the Crazy K donor program and she combines the MB leader, Prime Star with a dam blending New Design 1407 and Future Direction with the \$120,000 KiamichiLink Ranch donor, EXT 2114.
- Blackcap 8229 records a WR 3@111 and a YR 2@104 while carrying ultrasound ratios IMF 1@142 and REA 1@99 with one daughter recording a WR 1@104. The dam of Lot 28 posts a BR 2@95, a WR 3@106 and a YR 2@107 while showing ultrasound ratios IMF 9@110 and REA 9@104 with six daughters maintaining a combined WR 11@102.
- Has a 1/22/13 heifer, Lot 28A, by EXAR Significant 1769B.
- Has a 3/1/13 heifer, Lot 28B, by B/R New Day 454.
- Due 9/5/14 to VAR Reserve 1111.



28A

Crazy K Blackcap 3111

Birth Date: 1-22-2013

Cow +17529124

Tattoo: 3111

Connealy Consensus 7229
EXAR Significant 1769B
+16884386 +Sitz Henrietta Pride 643T

Connealy Consensus
Blue Lilly of Conanga 16
#Connealy Onward
Sitz Henrietta Pride 81M

Gardens Prime Star
44 Blackcap 8229
+16211119 +EXAR Blackcap 5333

#N Bar Prime Time D806
Green Garden Jilt C242 S1
#Bon View New Design 1407
+VAR Blackcap N06

CED		BW		WW		YW		MILK	
I+8	.05	I+2.1	.05	I+56	.05	I+90	.05	I+33	.05
CWT	I+35	MB	I+96	RE	I+88	FAT	I+003		
\$W	+43.50	\$F	+31.95	\$G	+49.98	\$B	+101.82		

28B

2T Blackcap 3002 [DDF]

Birth Date: 3-1-2013

Cow +17514614

Tattoo: 3002

#Boyd New Day 8005
B/R New Day 454
14675445 B/R Ruby 1224

#AAR New Trend
SVF Forever Lady 57D
#B/R New Design 323
+HF Ruby 036-951

Gardens Prime Star
44 Blackcap 8229
+16211119 +EXAR Blackcap 5333

#N Bar Prime Time D806
Green Garden Jilt C242 S1
#Bon View New Design 1407
+VAR Blackcap N06

CED		BW		WW		YW		MILK	
I+6	.05	I+1.8	.05	I+53	.05	I+92	.05	I+32	.05
CWT	I+31	MB	I+1.01	RE	I+93	FAT	I+013		
SW	+42.36	SF	+36.03	SG	+51.30	SB	+99.34		

Owned by 2 T Cattle Company, Selmer, TN

2T Blackcap 3002 / Lot 28B

Rita Family



Crazy K Rita 2104 /
Lot 29A

GAR Prime Time 2409 /
Descendants of this \$3.5 million producer
featured in the Jac's Ranch donor program
sell as Lots 29 through 32



29

Bo Bo Rita 9057 [DDF]

Birth Date: 2-22-2009

Cow #16484097

Tattoo: 9057

#B/R New Design 036
GAR Predestined
#13395344 #+GAR Ext 4206

#Gardens Prime Time
GAR Prime Time 2409
13395458 +GAR Ext 327

#VDAR New Trend 315
B/R Blackcap Empress 76
#N Bar Emulation EXT
+GAR 6807 Traveler 1432

#RR Traveler 5204
#Green Garden Susie 1246 S1
#N Bar Emulation EXT
+GAR 6807 Traveler 93

CED		BW		WW		YW		MILK	
+13	.35	+5	.35	+39	.33	+75	.33	+30	.34
CWT	+25	MB	+1.03	RE	+25	FAT	+0.38		
SW	+31.43	SF	+21.37	SG	+41.90	SB	+82.42		

- Rita 9057 is a proven and productive daughter of the former breed leader for MB and \$B and producer of more than \$3.5 million in progeny sales, Prime Time 2409 and is sired by the longtime MB feature of the Select Sires roster, Predestined.
- Rita 9057 records a BR 1@87 and a WR 2@107 with ultrasound ratios IMF 1@135 and REA 1@111. The dam of Lot 29, featured in the Jac's Ranch program, posts a BR 2@98, a WR 2@100 and a YR 2@103 while showing ultrasound ratios IMF 188@106 and a REA 188@101 with 76 daughters maintaining a combined WR 76@101.
- Maternal sisters to Lot 29 include: Prime Time H18, Lot 30; Rita R138 the dam of Lot 31 featured in the Hudson Pines Farm program; Rita R391, the \$440,000 valued one-time record valued open heifer; Rita R379, the \$220,000 one-time record selling full interest heifer selected by Monarch Farms and Collins Angus; and Rita R826, the \$50,000 selection of Riverbend Ranch through a past Baldrige Brothers sale.
- Has a 9/1/12 heifer, Lot 29A, by Connealy Consensus 7229.
- Due 9/14/14 to GAR Prophet.

29A

Crazy K Rita 2104

Birth Date: 9-1-2012

Cow 17401694

Tattoo: 2104

Connealy Consensus
Connealy Consensus 7229
16447771 Blue Lilly of Conanga 16

#GAR Predestined
Bo Bo Rita 9057
+16484097 GAR Prime Time 2409

#KMK Alliance 6595 I87
Blinda of Conanga 004
#Woodhill Admiral 77K
Blue Cash of Conanga 6020

#B/R New Design 036
#+GAR Ext 4206
#Gardens Prime Time
+GAR Ext 327

CED		BW		WW		YW		MILK	
+10	.32	+7	.34	+47	.33	+82	.36	+32	.23
CWT	+34	MB	+1.17	RE	+68	FAT	+0.26		
SW	+35.07	SF	+26.22	SG	+49.83	SB	+100.34		

- Rita 2104 posts a weaning ratio of 99 while showing ultrasound ratios IMF 135 and REA 111.
- Due 8/31/14 to GAR Prophet.

30

Decades Prime Time H18

Birth Date: 3-18-2008

Cow #16289328

Tattoo: H18

#Rito 616 of 4B20 6807
Rito 112 of 2536 Rito 616
#+13793826 GAR Precision 2536

#Gardens Prime Time
GAR Prime Time 2409
13395458 +GAR Ext 327

#DHD Traveler 6807
+Rita 4B20 of 0FB1 Bando
#GAR Precision 1680
+GAR Ext 2104

#RR Traveler 5204
#Green Garden Susie 1246 S1
#N Bar Emulation EXT
+GAR 6807 Traveler 93

CED		BW		WW		YW		MILK	
+12	.33	+1	.35	+42	.32	+82	.31	+22	.32
CWT	+31	MB	+79	RE	+11	FAT	+0.14		
\$W	+27.62	\$F	+28.66	\$G	+36.23	\$B	+83.97		

- Prime Time H18 is another outstanding daughter of the \$3.5 million producer in the Jac's Ranch program, Prime Time 2409 and is sired by the \$75,000 Rito 112.
- Prime Time H18 balances a BR 2@91 with a YR 1@104 with one daughter carrying a WR 1@100. The dam of Lot 30 posts a BR 2@98, a WR 2@100 and a YR 2@103 while showing ultrasound ratios IMF 188@106 and a REA 188@101 with 76 daughters maintaining a combined WR 76@101.
- Full sisters to Lot 30 include: Rita R379, the \$220,000 one-time record-selling full interest heifer in the Monarch Farms and Collins Angus programs; and Rita 5382, the feature of the joint embryo programs of Pollard Farms and A Cross Ranch. Maternal sisters to Lot 30 include: Rita 9057, who sells as Lot 29; Precision 492, the \$250,000 one-time record-selling Express Ranches donor; Precision 6283, the \$200,000 valued Deer Valley Farm and Springfield Angus donor; the \$25,000 former Daltons on the Sycamore donor, Rita T801; and Rita 733 in the KiamichiLink Ranch herd.
- Has a 9/28/13 heifer calf, Lot 30A, by Summitcrest Complete 1P55.
- Due 9/5/14 to AAR Ten X 7008 SA.

30A

Crazy K Rita 3366

Birth Date: 9-28-2013

Cow Reg.No.Pdg.

Tattoo: 3366

#CF Right Design 1802
Summitcrest Complete 1P55 [RDF]
14850409 Summitcrest Elba 1M17

#+Rito 112 of 2536 Rito 616
Decades Prime Time H18
+16289328 GAR Prime Time 2409

#Bon View New Design 1407
#+Vision HF Blackcap 0015
#Vermilion Dateline 7078
Summitcrest Elba 1F43

#Rito 616 of 4B20 6807
GAR Precision 2536
#Gardens Prime Time
+GAR Ext 327

CED		BW		WW		YW		MILK	
S+1	.80	+2.8	.96	+53	.94	+96	.91	+39	.78
D+12	.33	+1	.35	+42	.32	+82	.31	+22	.32
S-CWT	S-MRB	S-RE	S-Fat	D-CWT	D-MRB	D-RE	D-Fat		
+41	+53	+1.38	+0.01	+31	+79	+1.1	+0.14		
S-SW	S-SF	S-SG	S-SB	D-SW	D-SF	D-SG	D-SB		
+39.27	+41.28	+42.55	+100.72	+27.62	+28.66	+36.23	+83.97		

Rita Family



Baldrige Rita R138 /

A daughter of this cornerstone Hudson Pines Farms donor sells as Lot 31.

31

Daltons Rita 913

Birth Date: 1-28-2009

Cow +16451975

Tattoo: 913

#SS Traveler 6807 T510
SS Objective T510 OT26
#13776378 SS Miss Rita R011 7R8

#DHD Traveler 6807
#SS Miss Hi Spade A114
SS Rito Rito R76 R011
SS Miss Ultress U56

#GAR Retail Product
Baldrige Rita R138
+15119744 GAR Prime Time 2409

#GAR Precision 1680
+GAR Ext 4927
#Gardens Prime Time
+GAR Ext 327

TWIN LK SET									
CED		BW		WW		YW		MILK	
+12	.30	+4	.33	+50	.31	+95	.29	+26	.32
CWT		MB		RE		FAT		+022	
SW	+33.00	SF	+41.50	SG	+41.43	SB	+77.84		

- Rita 913 is a direct daughter of the \$27,000 anchor of the Angus program in the Hudson Pines Farm herd, Rita R138 sired by the proven growth sire, Objective.
- Rita 913 posts an ultrasound REA ratio 2@105 with one daughter showing a WR 1@106. The dam of Lot 31 records a BR 2@91, a WR 2@110 and a YR 2@111 while carrying ultrasound ratios IMF 88@103 and REA 88@99 with 22 daughters maintaining a combined WR 36@100.
- Maternal sisters to Lot 31 include: Rita 8253, the top-selling open heifer of the 2009 Daltons on the Sycamore Sale selected by Express Ranches; Rita 9174, the \$12,000 top-selling spring yearling of the 2010 Dalton Sale selling to Gillespie Angus; Rita 915, the \$8,500 selection of Rock River Ranch; and Rita 8217, the \$8,250 selection of Tennessee River Music through the 2013 Deer Valley Sale and dam of the \$28,000 valued half interest selection of Lisonbee Angus, Rita 2685.
- Due 2/20/14 to EXAR Significant 1769B.

32

BoBo Rita 1597 [DDC]

Birth Date: 12-5-2011

Cow 17156543

Tattoo: 1597

#GAR Predestined
Thomas Grade Up 6849
+15356040 Thomas Miss Lucy 4206

#B/R New Design 036
#+GAR Ext 4206
#CA Future Direction 5321
#+Thomas Miss Lucy 0671

#GAR Predestined
Raybar Rita 807
+16178858 +Baldrige Rita R138

#B/R New Design 036
#+GAR Ext 4206
#GAR Retail Product
GAR Prime Time 2409

CED		BW		WW		YW		MILK	
I+10	.05	+1.6	.25	+49	.28	+91	.28	+36	.18
CWT	+38	MB	+1.16	RE	+44	FAT	+0.62		
\$W	+33.90	SF	+36.75	\$G	+41.12	\$B	+96.22		

- Rita 1597 is an outstanding high MB first calf heifer by the featured MB sire in the BoBo Angus and Thomas Angus Ranch herd sire battery, Grade Up 6849 and produced by a direct daughter of the \$27,000 Hudson Pines Farm donor, Rita R138 by Predestined.
- Rita 1597 posts a weaning ratio of 107 and a yearling ratio of 105 while carrying an ultrasound REA ratio 104. The dam of Lot 32 records a BR 1@97, a WR 3@111 and a YR 3@103 while showing ultrasound ratios IMF 9@102 and REA 9@101.
- Full sisters to the dam of Lot 32 include: the \$30,000 record-selling heifer pregnancy in the Daltons on the Sycamore program selected by Mirapaso Farms; and Rita 8253, the top-selling open heifer of the 2009 Dalton Sale selected by Express Ranches.
- Has a 2/1/14 heifer calf, Lot 32A, by EXAR Upshot 0562B.



BoBo Rita 1597 /

Lot 32

Heifer Prospects



Crazy K Expectation 3122 /
Lot 33



Crazy K Blackcap 3100 /
Lot 34

33

Crazy K Expectation 3122

Birth Date: 1-28-2013

Cow +17530567

Tattoo: 3122

#SAV Final Answer 0035 [RDF]
Coleman Regis 904
+16433456 +Coleman Donna 714

#Sitz Traveler 8180
SAV Emulous 8145
#Connealy Onward
+Coleman Donna 386

#TC Total 410
LA Total Expectation 8035
+16433456 +GAR Expectation S 4011

#Bon View New Design 208
+TC Erica Eileen 2047
#+GAR Expectation 4915
+GAR Precision 2488

	CED		BW		WW		YW		MILK
I+5	.05	I+1.5	.05	I+59	.05	I+99	.05	I+33	.05
CWT	I+32	MB	I+49	RE	I+67	FAT	I-.010		
SW	+38.76	SF	+42.18	SG	+36.31	SB	+85.47		

- Expectation 3122 blends the proven Select Sires calving-ease specialist, Regis 904 with a powerful and productive daughter of Total who has been a foundation member of the Crazy K Ranch and BoBo Angus donor programs, Expectation 8035.
- The dam of Lot 33 records a WR 2@106 and a YR 1@100 while carrying an ultrasound IMF ratio3@103 with one daughter posting a WR 1@106. Expectation 3122 comes from the top of the Crazy K replacement females and offers a combination of proven low-birth, growth and maternal.

34

Crazy K Blackcap 3100

Birth Date: 1-8-2013

Cow 17530599

Tattoo: 3100

Connealy Consensus
Connealy Consensus 7229
16447771 Blue Lilly of Conanga 16

#KMK Alliance 6595 187
Blinda of Conanga 004
#Woodhill Admiral 77K
Blue Cash of Conanga 6020

#Sitz Upward 307R
VAR Blackcap 1085
16893972 +EXAR Blackcap 9155

#Connealy Onward
Sitz Henrietta Pride 81M
21AR Roundup 7005
+VAR Blackcap 5241

	CED		BW		WW		YW		MILK
I+4	.05	+3.0	.26	+60	.29	+100	.24	+32	.19
CWT	I+52	MB	I+66	RE	I+93	FAT	I-.005		
SW	+38.15	SF	+42.99	SG	+41.03	SB	+107.83		

- Blackcap 3100 is a powerful spring yearling and blends the proven balanced-trait sire, Consensus 7229 with a first calf heifer combining the growth of Upward 307R with a daughter of the low-birth sire, Roundup 7005.
- Blackcap 3100 records a weaning ratio of 106.

35

2T Blackcap 3003

Birth Date: 3-1-2013

Cow 17507605

Tattoo: 3003

Connealy Reflection
Connealy Impression
15543702 Pearl Pammy of Conanga 194

#Bon View New Design 878
Happy Grill of Conanga 6260
#Vermilion Dateline 7078
Pearl Jam of Conanga 6114

+SAV Bismarck 5682 [RDF]
Deer Valley Blackcap 1415
+16964732 +SandPoint Blackcap 7821

#+GAR Grid Maker
SAV Abigale 0451
#Connealy Onward
+A Plus Blackcap 0094

	CED		BW		WW		YW		MILK
I+10	.05	I+9	.05	I+59	.05	I+99	.05	I+29	.05
CWT	I+26	MB	I+48	RE	I+85	FAT	I-.018		
SW	+43.79	SF	+42.18	SG	+39.33	SB	+82.21		

Owned by 2 T Cattle Company, Selmer, TN

- Blackcap 3003 is a low-birth prospect sired by Impression and stemming from a dam combining the featured Genex roster member, Bismarck and the now-deceased growth sire, Onward with the longtime member of the joint embryo programs of SandPoint Cattle Company and Taylor Cattle, Blackcap 0094.



A Plus Blackcap 0094 / The foundation third dam of Lot 35 and anchor of the SandPoint Cattle Company and Taylor Cattle joint embryo programs.

Heifer Prospects



Crazy K Blackcap 2156 /
Lot 37



Everelda Entense 0244 / The
cornerstone third dam of Lot 36 and direct
daughter of the legendary Everelda Entense 1137.

36

2T Total Impact 3001

Birth Date: 2-14-2013

Cow 17661173

Tattoo: 3001

#TC Total 410

Poss Total Impact 745

15855405 Poss Blackcap 5116

#Bon View New Design 208

+TC Erica Eileen 2047

#Connealy Lead On

Poss Blackcap 205

SAV Thunderbird 9061

Grubbs Miss Entense 171

16955630 +R/M Everelda Entense 8A69

#SAV Final Answer 0035 [RDF]

SAV Emblynette 7411

#B/R New Design 323

+Everelda Entense 0244

	CED		BW		WW		YW		MILK
I+5	.05	I+.9	.05	I+58	.05	I+104	.05	I+18	.05
CWT	N/A	MB	N/A	RE	N/A	FAT	N/A		
SW	+32.44	SF	+49.43	\$G	N/A	\$B	N/A		

Owned by 2 T Cattle Company, Selmer, TN

• Total Impact 3001 is a low-birth and growth female from the top of the 2T replacement females. She combines the growth, MB and \$B sire, Total Impact 745 with a dam blending Thunderbird 9061 and New Design 323 with the direct daughter of the \$5 million producer and former Shady Brook Angus matriarch, Everelda Entense 1137, Everelda Entense 0244.



B/R Ruby of Tiffany 8250 / The matriarch of the 44
Farms program and third dam of Lot 38.

37

Crazy K Blackcap 2156

Birth Date: 12-22-2012

Cow 17527744

Tattoo: 2156

44 King James 7526

44 CKR King James X005

16752013 +Limestone Primrose T676

Stevenson Moneymaker 1427

44 Blackcap X527

16761731 44 Blackcap 8243

#SS Objective T510 OT26

+Clifton Young Lucy 3240

#GAR Predestined

+VAR Primrose 4044

#Stevenson Moneymaker R185

Stevenson MS 914A D52L

Connealy All Around

+Three Trees Blackcap T0410

	CED		BW		WW		YW		MILK
N/A	N/A	+1.4	.18	+57	.24	+99	.17	+25	.08
CWT	I+26	MB	I+.98	RE	I+.73	FAT	I+.010		
SW	+35.83	SF	+43.21	\$G	+49.65	\$B	+92.67		

• Blackcap 2156 is a carcass prospect sired by the headliner of the Crazy K and 44 Farms herd sire batteries, King James X005 and she was produced by a first calf heifer by the 44 Farms sire, Moneymaker 1427.

• Blackcap 2156 posts a weaning ratio of 104.

38

Crazy K Ruby of Tiffany 2155

Birth Date: 12-21-2012

Cow 17534833

Tattoo: 2155

MCC Daybreak

GAR Daylight

+16933585 +GAR Objective R227

Callaways Cure All 1353

SH Ruby of Tiffany 1597

+16925889 +B/R Ruby of Tiffany 2251

#+Boyd New Day 8005

#MCC Miss Focus 134

#SS Objective T510 OT26

+GAR 1407 New Design 2983

#SS Objective T510 OT26

Callaways Ideal 1031

#Rockn D Ambush 1531

+B/R Ruby of Tiffany 8250

	CED		BW		WW		YW		MILK
N/A	N/A	+3	.22	+59	.25	+105	.16	+21	.11
CWT	I+25	MB	I+.99	RE	I+.69	FAT	I-.050		
SW	+34.54	SF	+50.26	\$G	+54.46	\$B	+96.70		

• Ruby of Tiffany 2155 is a low-birth, growth and MB female by the calving-ease, growth and MB sire, Daylight and produced by a direct daughter of the full sister to the MB and \$B sire, Ambush 28, Ruby of Tiffany 2251.

• Ruby of Tiffany 2155 was produced by a first calf heifer and records a weaning ratio of 102.

Bred Heifers



**Crazy K
Rona 2141 /**
Lot 39

39 Crazy K Rona 2141

Birth Date: 10-24-2012

Cow 17401703

Tattoo: 2141

44 King James 7526
44 CKR King James X005
16752013 +Limestone Primrose T676

#SS Objective T510 0T26
+Clifton Young Lucy 3240
#GAR Predestined
+VAR Primrose 4044

#Connealy Onward
Mc Rona 8132
+16415010 Jenny of Conanga 619

#Connealy Lead On
Altune of Conanga 6104
#Baldridge Kaboom K243 KCF
Jen of Conanga 5614

	CED	BW		WW	YW		MILK			
	+12	.25	+2.4	.31	+59	.25	+106	.28	+27	.13
CWT	+41	MB	+1.27		RE	+91	FAT	-.009		
SW	+37.10	SF	+51.63		SG	+56.51	SB	+115.60		

Owned by 2 T Cattle Company, Selmer, TN

- Rona 2141 is a multi-trait and high MB bred heifer sired by the Crazy K and 44 Farms sire, King James X005 and she stems from a dam combining the proven growth sires, Onward and Kaboom.
- Produced by a first calf heifer Rona 2141 records a weaning ratio of 100 and a yearling ratio of 100 while carrying ultrasound ratios of 100 for IMF and REA.
- Due 9/26/14 to Connealy Earnan 076E.

40 Crazy K Rita 2318

Birth Date: 10-8-2012

Cow +17415100

Tattoo: 2318

#SAV Final Answer 0035 [RDF]
Connealy Capitalist 028
16752262 Prides Pita of Conanga 8821

#Sitz Traveler 8180
SAV Emulous 8145
#CRA Bextor 872 5205 608
Prides Trav of Conanga 6499

#+Rito 112 of 2536 Rito 616
DRMCTR 112 Rita 6231
+15546170 +DRMCTR 2908s Design 2802

#Rito 616 of 4B20 6807
GAR Precision 2536
#Bon View New Design 1407
+GAR Precision 2908

	CED		BW		WW		YW		MILK	
	+10	.30	+1.0	.34	+64	.28	+107	.32	+26	.17
CWT	+27		MB	+75		RE	+53		FAT	-.008
SW	+44.04		SF	+50.35		SG	+43.42		SB	+88.02

- Rita 2318 blends the calving-ease specialist in the 44 Farms herd sire battery, Capitalist 028 and stems from a dam combining the Pathfinder Sires, Rito 112 and New Design 1407.
- Rita 2318 posts ultrasound ratios IMF 114 and REA 100. The dam of Lot 40 records a BR 2@92, a WR 3@105 and a YR 1@110 while showing an ultrasound IMF ratio 9@109.
- Due 8/30/14 to VAR Reserve 1111.



Crazy K Rita 2318 /
Lot 40

Bred Heifers



**2T Special
Lady 2001 /**
Lot 41

41

2T Special Lady 2001

Birth Date: 9-1-2012

Cow 17481156

Tattoo: 2001

#Sitz Upward 307R
EXAR Upshot 0562B
16541214 #+EXAR Barbara T020

#Connealy Onward
Sitz Henrietta Pride 81M
#Isu Imaging Q 9111
LCC Mc Henry Barbar MG382

#BR Midland
Silveiras 1161 Lady 7550
+16190385 PAF 9611 616 1161

#Twin Valley Precision E161 [RDF]
BR Royal Lass 7036-19
#Rito 616 of 4B20 6807
Paf 736Z Ext 9611

CED	BW	WW	YW	MILK
+9	.30	+2.7	.34	+46
.31	+84	.33	+28	.17
CWT	MB	RE	FAT	
+33	+.59	+.88	+.027	
\$W	\$F	\$G	\$B	
+29.26	+29.23	+38.28	+88.27	

Owned by 2 T Cattle Company, Selmer, TN

- Special Lady 2001 is a powerful bred heifer by the proven REA and \$B sire featured in the Express Ranches, BoBo Angus and ABS rosters, Upshot 0562B and produced by sensational producing dam blending Midland and Rito 616.
- Special Lady 2001 shows an ultrasound IMF ratio of 118. The dam of Lot 41 records a WR 4@104 while showing ultrasound ratios IMF 2@105 and REA 2@99.
- Due 9/26/14 to AAR Ten X 7008 SA.

42

Crazy K Forever Lady 2209

Birth Date: 10-1-2012

Cow +17525172

Tattoo: 2209

#TC Gridiron 258
SAV Iron Mountain 8066
16115617 SAV Madame Pride 3249

#+GAR Grid Maker
#TC Blackbird 7049
#SAV 8180 Traveler 004 [RDF]
SAV Madame Pride 8264

#+Rito 112 of 2536 Rito 616
EXAR Forever Lady 6432
+15347622 +Boyd Forever Lady 7120

#Rito 616 of 4B20 6807
GAR Precision 2536
#AAR New Trend
SVF Forever Lady 57D

CED	BW	WW	YW	MILK
-3	.32	+3.5	.35	+65
.30	+110	.33	+19	.24
CWT	MB	RE	FAT	
+37	+.40	+.35	+.008	
\$W	\$F	\$G	\$B	
+37.55	+53.93	+26.28	+81.46	

- Forever Lady 2209 blends the Accelerated Genetics roster member, Iron Mountain 8066 with a direct daughter of the \$225,000 valued Forever Lady 7120 sired by the longtime Select Sires roster member, Rito 112.
- The dam of Lot 42 records a WR 2@118 and a YR 2@116 while three daughters maintain a combined WR 4@107.
- Due 8/31/14 to AAR Ten X 7008 SA.



**Crazy K Forever
Lady 2209 /**
Lot 42

First Calf Heifers



SJH
Predestined of
8021 2008 /
Lot 43

43

SJH Predestined of 8021 2008 [DDF]

Birth Date: 1-9-2012

Cow 17300905

Tattoo: 2008

#B/R New Design 036

#VDAR New Trend 315

GAR Predestined

B/R Blackcap Empress 76

#13395344 #+GAR Ext 4206

#N Bar Emulation EXT

+GAR 6807 Traveler 1432

#SS Objective T510 OT26

#SS Traveler 6807 T510

LA Blackcap OT26 8021

SS Miss Rita R011 7R8

16276533 +GAR Expectation S5016

#+GAR Expectation 4915

+GAR Precision 4659

	CED	BW	WW	YW	MILK		
-1	.36	+4.5	.43	+74	.33	+33	.24
CWT	+41	MB	+95	RE	+75	FAT	+0.09
\$W	+48.47	\$F	+57.42	\$G	+46.89	\$B	+106.34

• Predestined of 8021 2008 is an outstanding first calf heifer to lead-off the spring calving production pairs and she blends the longtime Select Sires roster member and MB sire, Predestined with a dam combining the growth of Objective with the maternal of Expectation 4915.

• Predestined of 8021 2008 records a weaning ratio of 120 while showing ultrasound ratios IMF 109 and REA 107. The dam of Lot 43 posts a WR 2@110 while carrying an ultrasound REA ratio 7@106.

• Has a 1/30/14 heifer calf, Lot 43A, by AAR Ten X 7008 SA.

44

Lone Oaks Primrose Z147

Birth Date: 2-29-2012

Cow +17184024

Tattoo: Z147

#Sitz Upward 307R

#Connealy Onward

EXAR Upshot 0562B

Sitz Henrietta Pride 81M

16541214 #+EXAR Barbara T020

#Isu Imaging Q.9111

LCC Mc Henry Barbar MG382

#GAR Predestined

#B/R New Design 036

DC RWPC Primrose U402

#+GAR Ext 4206

+16347049 +WCC Primrose J136

#B/R New Design 323

N Bar Primrose 2424

CED		BW		WW		YW		MILK	
I+10	.05	I+1.3	.05	I+55	.05	I+100	.05	I+33	.05
CWT	+40	MB	+86	RE	+91	FAT	+032		
\$W	+47.80	\$F	+45.59	\$G	+44.39	\$B	+101.95		

• Primrose Z147 is another tremendous first calf heifer blending the REA and \$B sire, Upshot 0562B with a dam combining Predestined and New Design 323 with the \$100,000 herd sire producing matriarch, Primrose 2424.

• Primrose Z147 posts ultrasound ratios IMF 101 and REA 102. The dam of Lot 44 records a WR 2@112 and a YR 2@109 while one daughter carries a WR 1@105.

• Due 2/24/14 to GAR Prophet.



Thomas Eisa Erica 6714 / A daughter of this featured Jac's
Ranch donor sells as Lot 45.

45

Jacs Eisa Erica 2046

Birth Date: 2-3-2012

Cow +17254171

Tattoo: 2046

#Connealy Onward

#Connealy Lead On

Werner War Party 2417

Altune of Conanga 6104

+16004857 +BAAR USA Lady Jaye 489

#BAR Ext Traveler 205

Cra Lady Jaye 608 498 S Easy

#GAR Predestined

#B/R New Design 036

Thomas Eisa Erica 6714

#+GAR Ext 4206

+15355977 Circle S Eisa Erica 6073

#N Bar Emulation EXT

Circle S Eisa Erica 067

COWS & MILK												
	CED		BW		WW		YW		MILK			
I+6	.05	+3.9		.37	+51		.30	+93	.25	+33		.21
CWT	I+40		MB	I+.67		RE	I+1.00		FAT	I+.022		
\$W	+29.11		\$F	+38.35		\$G	+41.49		\$B	+98.67		

• Eisa Erica 2046 is a first calf heifer sired by the \$75,000 Select Sires roster member and son of the Crazy K donor, Lady Jaye 489, War Party 2417 and was produced by the \$10,000 cornerstone donor in the Jac's Ranch program, Eisa Erica 6714.

• Eisa Erica 2046 posts ultrasound ratios of 100 for IMF and REA. The dam of Lot 45 records a WR 3@110 and a YR 2@112 while showing ultrasound ratios IMF 33@103 and REA 33@104. The dam joined the Jac's program as the top-selling female of the 2010 Thomas Angus Ranch Sale to anchor this foundation family developed in the Circle S program.

• Progeny from the dam of Lot 45 includes: Eisa Erica 2009, the selection of Bricton Farms; and heifer pregnancies selling in past Jac's sales to Deer Valley Farm, BoBo Angus and KiamichiLink Ranch.

• Has a 1/26/14 heifer calf, Lot 45A, by Connealy Impression.

Spring Pairs

46

Crazy K Rita L144

Birth Date: 1-28-2012

Cow +17276372

Tattoo: L144

#Sitz Upward 307R

#Connealy Onward

Whitestone Black Arrow Z101

Sitz Henrietta Pride 81M

16649387 Whitestone Evergreen W243

Koupals B&B Traveler 4062

Whitestone Evergreen U170

#Morgans Direction 111 9901 [RDF]

#CA Future Direction 5321

Whitestone Rita W147

MCC Barbie 9901 5205 797

#15723937 +Whitestone Rita 666T

#BCC Bushwacker 41-93

Whitestone Rita J054 of F281

	CED		BW		WW		YW		MILK
I+2	.05	I+2.6	.05	I+52	.05	I+90	.05	I+32	.05
CWT	+29	MB	+36	RE	+67	FAT	-.017		
SW	+33.24	SF	+33.94	SG	+32.21	SB	+77.77		

- Rita L144 is a balanced-trait daughter of the former Whitestone top-seller, Black Arrow Z101 and she stems from a Pathfinder Dam combining Morgans Direction and Bushwacker.
- Rita L144 carries an ultrasound REA ratio of 100. The Pathfinder Dam of Lot 46 records a WR 4@104 and a YR 1@102 while showing an ultrasound IMF ratio 2@103.
- Has a 2/4/14 heifer calf, Lot 46A, by Rito 9M25 of Rita 5F56 Pred.



Whitestone Black Arrow Z101 / A daughter sells as Lot 46.



Werner War Party 2417 / Sire of Lot 47.

48

TRM Forever Lady 042

Birth Date: 8-10-2010

Cow +16807778

Tattoo: 042

#SAV Final Answer 0035 [RDF]

#Sitz Traveler 8180

SAV Pioneer 7301

SAV Emulous 8145

15688392 SAV Blackbird 5297

#+Boyd New Day 8005

SAV Blackbird 1082

#Connealy Onward

#Connealy Lead On

Boyd Forever Lady 7001

Altune of Conanga 6104

+15738989 +Boyd Forever Lady 811

#GDAR Traveler 71

SVF Forever Lady 57D

	CED		BW		WW		YW		MILK
+11	.30	+1	.35	+55	.28	+99	.27	+35	.26
CWT	+38	MB	+41	RE	+40	FAT	+052		
SW	+40.79	SF	+44.25	SG	+21.79	SB	+77.29		

- Forever Lady 042 is a low-birth daughter of the Genex roster highlight, Pioneer 7301 and stems from a dam blending the growth of Onward and the maternal of Traveler 71 with the legendary Forever Lady 57D.
- Forever Lady 042 posts a BR 1@99, a WR 1@108 and a YR 1@100. The dam of Lot 48 carries ultrasound ratios IMF 10@105 and REA 10@105.
- Has a 1/22/14 heifer calf, Lot 48A, by Rito 9Q13 of Rita 5F56 GHM.



Boyd Forever Lady 811 / A granddaughter sells as Lot 47.

47

44 Ms Paradise X530

Birth Date: 9-13-2010

Cow 16763067

Tattoo: X530

#Connealy Onward

#Connealy Lead On

Werner War Party 2417

Altune of Conanga 6104

+16504857 +BAAR USA Lady Jaye 489

#BAR Ext Traveler 205

Cra Lady Jaye 608 498 S Easy

B/R Future Direction 4268

#CA Future Direction 5321

44 Paradise 8217

B/R Ruby 9114

+16501575 +CMW Paradise Miss K Ext 3

#N Bar Emulation EXT

+Rita 7K3 of 5H11 Hoss

	CED		BW		WW		YW		MILK
+4	.24	+2.4	.25	+57	.29	+101	.29	+28	.24
CWT	+46	MB	+62	RE	+91	FAT	+017		
SW	+40.82	SF	+45.89	SG	+38.48	SB	+101.23		

- Paradise X530 is a proven daughter of the \$75,000 War Party 2417 and stems from a dam combining the carcass of Future Direction 4268 and the legendary female sire, EXT while descending from the breed cornerstone Rita 5H11.
- Paradise X530 shows an ultrasound REA ratio 1@103. The dam of Lot 47 posts ultrasound ratios IMF 2@107 and REA 2@107.
- Has a 1/29/14 heifer calf, Lot 47A, by 44 CKR King James X005.

Performance Pairs

49

Fox Run Entense 0030 [DDF]

Birth Date: 1-23-2010

Cow 16620160

Tattoo: 0030

#Rockn D Ambush 1531
B/R Ambush 28
#14188956 +B/R Ruby of Tiffany 8250

#Paramont Ambush 2172
MS Blackcap Band of RD 1301
#N Bar Emulation EXT
B/R Ruby of Tiffany 5113

#Bon View New Design 1407
Entense of Holiday 5065
+15101189 +BT Everelda Entense 57D

#B/R New Design 036
Bon View Pride 664
#+Leachman Right Time
Sitz Everelda Entense 1905

	CED	BW	WW	YW	MILK
+8	.30	+1.6	.36	+54	.31
CWT	+30	MB	+1.17	RE	+.72
SW	+31.63	SF	+42.10	\$G	+54.83
				\$B	+102.30

- Entense 0030 is a proven and productive MB daughter of the featured MB and \$B sire in the Select Sires and 44 Farms herd sire rosters, Ambush 28 and she stems from a direct daughter of the \$380,000 valued Everelda Entense 57D sired by the Pathfinder Sire, New Design 1407.
- Entense 0030 records a WR 2@101 and a YR 1@108 while showing ultrasound ratios IMF 1@134 and REA 1@104.
- Has a 1/22/14 bull calf, Lot 49A, by PA Power Tool 9108.



Entense of Holiday 5065 / A daughter sells as Lot 49.

50

RRR Blackcap X29

Birth Date: 3-3-2010

Cow +16719990

Tattoo: X29

#SS Objective T510 0T26
GAR Ultimate
15464043 +GAR Load Up 1314

#SS Traveler 6807 T510
SS Miss Rita R011 7R8
RAB-GAR Load Up 4049J
+GAR New Design 80

#Rito 616 of 4B20 6807
GAR 616 Rito 1131
+14011095 GAR Precision 706

#DHD Traveler 6807
+Rita 4B20 of 0FB1 Bando
#GAR Precision 1680
+GAR Ext 2114

	CED	BW	WW	YW	MILK
I+8	.05	+2.4	.34	+54	.30
CWT	I+16	MB	I+71	RE	I+60
SW	+36.79	SF	+34.23	\$G	+47.04
				\$B	+76.39

- Blackcap X29 is a direct daughter of the foundation Blackcap in the Rock River Ranch program, Rito 1131 sired by the \$100,000 balanced-trait sire, Ultimate.
- Blackcap X29 records a WR 2@116. The dam of Lot 50 posts a WR 4@109 and a YR 3@103 and is a direct daughter of the \$70,000 former Sterling Hunter matriarch, Precision 706.
- Due 2/15/14 to Rito 9M25 of Rita 5F56 Pred.



GAR 616 Rito 1131 / Dam of Lot 50.

51

44 Ms Bextor 0094

Birth Date: 2-11-2010

Cow 16642973

Tattoo: 0094

#BAR Ext Traveler 205
CRA Bextor 872 5205 608
#13009379 Cra Lady Jaye 608 498 S Easy

#N Bar Emulation EXT
#BAR Queen Traveler 3015
#+GAR Sleep Easy 1009
HHF 917 Lady 975 498

#GAR Retail Product
Shamrock Vale 5659 6017
15521515 Shamrock Vale 616 4018

#GAR Precision 1680
+GAR Ext 4927
#Rito 616 of 4B20 6807
Shamrock Vale Spectrum 2052

	CED	BW	WW	YW	MILK
+8	.32	+1.5	.39	+48	.31
CWT	+14	MB	+.72	RE	+.85
SW	+39.24	SF	+39.88	\$G	+45.69
				\$B	+72.63

- Bextor 0094 is a proven and productive daughter of the longtime balanced-trait leader in the Select Sires roster, Bextor and she stems from a dam combining three generations of Select Sires roster members, Retail Product, Rito 616 and Spectrum 1176.
- Bextor 0094 posts a WR 2@101 and a YR 2@99 while carrying an ultrasound IMF ratio 1@108. The dam of Lot 51 records a BR 3@97, a WR 3@101 and a YR 2@106 while showing an ultrasound REA ratio 3@103.
- Has a 1/26/14 heifer calf, Lot 51A, by Rito 9M25 of Rita 5F56 Pred.



CRA Bextor 872 5205 608 / Sire of Lot 51.

Spring Pairs



**Maplecrest
Foreverlady A9239 /**
Lot 53



VAR Blackcap 6056 /
Dam of Lot 54.

52

44 Ms Future Direction X507

Birth Date: 9-1-2010

Cow 16761728

Tattoo: X507

#Stevenson Moneymaker R185
Stevenson Moneymaker 1427
15696463 Stevenson MS 914A D52L

#Boyd On Target 1083
#Stevenson Clova Pride L888
#Stevenson Bruno 561G
NR MS 914A 5920

B/R 65R Genesis
44 Ms Future Direction 8266
+16414310 +DRMCTR Future Direction 4F34

#CA Future Direction 5321
B/R Blackcap Empress 127
#CA Future Direction 5321
DRMCTR Focus 0F01

	CED		BW		WW		YW		MILK	
I+7	.05	+2.3	.23	+55	.25	+101	.25	+24	.13	
CWT	+30		MB	+62		RE	+35		FAT	+034
\$W	+33.50		\$F	+46.94		\$G	+32.52		\$B	+80.21

Owned by 2 T Cattle Company, Selmer, TN

- Future Direction X507 is a balanced-trait daughter of the 44 Farms herd sire, Moneymaker 1427 and stems from a dam combining the proven carcass sires, Genesis and Future Direction.
- The dam of Lot 52 posts a BR 1@90, a WR 2@99 and a YR 1@102 while showing an ultrasound REA ratio 1@101.
- Has a 1/9/14 bull calf, Lot 52A, by Double R Bar War Party Y149.

53

Maplecrest ForeverLady A9239 [DDF]

Birth Date: 10-2-2009

Cow +16594738

Tattoo: A9239

#SS Traveler 6807 T510
SS Objective T510 0T26
#13776378 SS Miss Rita R011 R78

#DHD Traveler 6807
#SS Miss Hi Spade A114
SS Rito Rito R76 R011
SS Miss Ultress U56

#GAR Predestined
Maplecrest Forever Lady A622
+15661453 +Maplecrest Forever Lady S301

#B/R New Design 036
#+GAR Ext 4206
#Twin Valley Precision E161 [RDF]
+Baldridge Forever Lady 800J

	CED		BW		WW		YW		MILK	
+10	.29	+2.1	.31	+53	.26	+99	.27	+25	.29	
CWT	+27		MB	+96		RE	+50		FAT	+056
\$W	+32.68		\$F	+45.29		\$G	+41.21		\$B	+85.49

- Foreverlady A9239 is a proven daughter of the longtime Quaker Hill Farm and ABS herd sire battery member, Objective and she was produced by the highly productive dam combining Predestined and Precision E161.
- Foreverlady A9239 balances a BR 2@91 with a YR 2@105 while carrying an ultrasound REA ratio 1@101. The dam of Lot 53 records a BR 1@97, a WR 2@110 and a YR 1@101 while showing ultrasound ratios IMF 21@101 and REA 21@99.
- Due 3/21/14 to 44 Conveyance 0X52.

54

Monarch Blackcap 9700

Birth Date: 1-1-2009

Cow +16256549

Tattoo: 9700

#N Bar Prime Time D806
Gardens Prime Star
14740749 Green Garden Jilt C242 S1

#Gardens Prime Time
N Bar Miss Emulous A404
#SS Traveler 6807 T510
Green Garden Jilt 9242 S1

#+Rito 112 of 2536 Rito 616
VAR Blackcap 6056
+15276689 +GAR 044 Traveler 2328

#Rito 616 of 4B20 6807
GAR Precision 2536
#GDAR Traveler 044
GAR Precision 2536

	CED		BW		WW		YW		MILK	
I+5	.05	+2.2	.28	+48	.26	+85	.26	+28	.27	
CWT	+17		MB	+80		RE	+37		FAT	+020
\$W	+31.99		SF	+29.52		\$G	+41.78		\$B	+72.17

Owned with 2 T Cattle Company, Selmer, TN

- Blackcap 9700 is a proven female from the heart of the Crazy K and 2 T spring calving programs and she blends the longtime MB leader, Prime Star with a direct daughter of the \$280,000 Traveler 2328, Blackcap 6056.
- Blackcap 9700 records a WR 1@112 and a YR 2@103 while carrying ultrasound ratios IMF 1@100 and REA 1@100. The dam of Lot 54 posts a WR 3@100 with six daughters maintaining a combined WR 8@107.
- Has a 1/27/14 heifer calf, Lot 54A, by Connealy Confidence 0100.



Performance Females



Crazy K Rita 1104 / Lot 56

55

Mindemann Blackcap 817 [DDF-NHF]

Birth Date: 1-22-2008

Cow +16077501

Tattoo: 817

#B/R New Design 036

#VDAR New Trend 315

GAR Predestined

B/R Blackcap Empress 76

#13395344 #+GAR Ext 4206

#N Bar Emulation EXT

+GAR 6807 Traveler 1432

#Sitz Traveler 8180

#GDAR Traveler 71

GAR Blackcap 614

Sitz Everelda Entense 1137

+14335845 GAR Precision 706

#GAR Precision 1680

+GAR Ext 2114

	CED	BW	WW	YW	MILK				
+4	.27	+3.4	.35	+48	.30	+85	.26	+29	.29
CWT	+26	MB	+79	RE	+.30	FAT	+.035		
\$W	+30.68	\$F	+29.52	\$G	+37.28	\$B	+79.08		

• Blackcap 817 is a balanced-trait daughter of the longtime MB and \$B highlight of the Select Sires roster. Predestined and she was produced by a direct daughter of the \$2 million producer, Precision 706 sired by the Pathfinder Sire, Traveler 8180.

• Blackcap 817 records a WR 3@106 and a YR 1@109. The dam of Lot 55 posts a BR 1@96, a WR 1@105 and a YR 1@101 with six daughters maintaining a combined WR 11@104.

• Has a 1/28/14 heifer calf, Lot 55A, by 44 CKR King James X005.



GAR Precision 706 / The \$70,000 grandam of Lot 55.

56

Crazy K Rita 1104

Birth Date: 8-6-2011

Cow 17095308

Tattoo: 1104

Connealy Consensus

#KMK Alliance 6595 I87

Connealy Consensus 7229

Blinda of Conanga 004

16447771 Blue Lilly of Conanga 16

#Woodhill Admiral 77K

Blue Cash of Conanga 6020

GAR Ultimate

#SS Objective T510 0T26

Bo Bo Rita 9138

+GAR Load Up 1314

+16478379 +GAR Retail Product H536

#GAR Retail Product

GAR 1407 New Design 1942

	CED	BW	WW	YW	MILK				
+7	.36	+1.6	.41	+64	.32	+107	.34	+33	.21
CWT	+37	MB	+81	RE	+.84	FAT	-.003		
\$W	+38.87	\$F	+50.35	\$G	+46.25	\$B	+101.43		

• Rita 1104 is a sensational lead-off first calf heifer of the fall calving females headlining this first time offering from Crazy K and she blends the balanced-trait Express Ranches, BoBo Angus and SandPoint Cattle Company sire, Consensus 7229 with an Ultimate daughter of the former BoBo Angus and Missing S Angus donor now working in the Blackstone Cattle Company program, Retail Product H536.

• Rita 1104 was produced by a first calf heifer and records a weaning ratio of 123 and a yearling ratio of 115 while showing ultrasound ratios IMF 119 and REA 110.

• Has a 8/24/13 heifer calf, Lot 56A, by EXAR Upshot 0562B.

• Bred 1/10/14 to VAR Reserve 1111.

56A

Crazy K Rita 3305

Birth Date: 8-24-2013

Cow 17693321

Tattoo: 3305

#Sitz Upward 307R

#Connealy Onward

EXAR Upshot 0562B

Sitz Henrietta Pride 81M

16541214 #+EXAR Barbara T020

#Isu Imaging Q 9111

LCC Mc Henry Barbar MG382

Connealy Consensus 7229

Connealy Consensus

Crazy K Rita 1104

Blue Lilly of Conanga 16

17095308 +Bo Bo Rita 9138

GAR Ultimate

+GAR Retail Product H536

	CED	BW		WW		YW		MILK	
I+9	.05	I+2.2	.05	I+62	.05	I+110	.05	I+35	.05
CWT	I+49	MB	I+69	RE	I+1.08	FAT	I+.007		
\$W	+40.45	\$F	+55.54	\$G	+42.96	\$B	+108.48		

First Calf Heifers



Bridges 454 New Day 129 /
Lot 57

Crazy K Ruby of Tiffany 1576 /
Lot 58



57 Bridges 454 New Day 129 [DDF]

Birth Date: 1-1-2011
#Boyd New Day 8005
B/R New Day 454
14675445 B/R Ruby 1224

Cow +16847632
#AAR New Trend
SVF Forever Lady 57D
#B/R New Design 323
+HF Ruby 036-951

#GAR Predestined
GAR Predestined A7003
+15855890 +GAR Precision 3514

#B/R New Design 036
#+GAR Ext 4206
#GAR Precision 1680
+GAR T510 Traveler 2721

	CED		BW		WW		YW		MILK
+8	.29	+1.5	.33	+51	.27	+95	.26	+31	.22
CWT	+27	MB	+93		RE	+88	FAT	+0.04	
\$W	+45.57	\$F	+40.98		\$G	+50.54	\$B	+94.21	

- New Day 129 is an outstanding first calf heifer and she combines the proven REA sire in the 44 Farms and Select Sires herd sire batteries, New Day 454 with a dam combining the MB sire, Predestined with a dam sired by the foundation Select Sires roster member, Precision.
- New Day 129 posts an ultrasound IMF ratio of 102. The dam of Lot 57 records a BR 2@97, a WR 2@106 and a YR 2@102 while showing an ultrasound IMF ratio 14@104.
- Has a 7/25/13 heifer calf, Lot 57A, by GAR Prophet.
- Due 9/5/14 to GAR Prophet.

58 Crazy K Ruby of Tiffany 1576 [DDF]

Birth Date: 9-28-2011
#CF Right Design 1802
Summitcrest Complete 1P55 [RDF]
14850409 Summitcrest Elba 1M17

Cow 17014599
#Bon View New Design 1407
#+Vision HF Blackcap 0015
#Vermilion Dateline 7078
Summitcrest Elba 1F43

#B/R Destination 727-928
B/R Ruby of Tiffany 5162
+15007855 +B/R Ruby of Tiffany 1210

#B/R Destination 727
B/R Blackcap Empress 558
#B/R New Design 036
B/R Ruby of Tiffany 155

CED		BW		WW		YW		MILK	
I+6	.05	I+2.1	.05	I+44	.05	I+81	.05	I+30	.05
CWT	I+38	MB	I+69	RE	I+1.04	FAT	I-.002		
\$W	+29.13	\$F	+26.42	\$G	+45.02	\$B	+99.60		

- Ruby of Tiffany 1576 is a REA first calf heifer sired by the featured Deer Valley Farm and ABS roster member, Complete 1P55 and she stems from the foundation Ruby of Tiffany in the Hill House Angus program, Ruby of Tiffany 5162.
- The dam of Lot 58 blends the outcross sire Destination 727-928 with a full sister to the 44 Farms sire, New Design 323 and she carries an ultrasound REA ratio 3@102.
- Has a 9/12/13 heifer calf, Lot 58A, by Connealy Confidence 0100.
- Due 9/23/14 to AAR Ten X 7008 SA.

57A Crazy K Rita 3301

Birth Date: 7-25-2013
#CRA Bextor 872 5205 608
GAR Prophet
+16295688 +GAR Objective 1885

Cow 17704855
#BAR Ext Traveler 205
Cra Lady Jaye 608 498 S Easy
#SS Objective T510 0T26
GAR 1407 New Design 2232

B/R New Day 454
Bridges 454 New Day 129
+16847632 +GAR Predestined A7003

#Boyd New Day 8005
B/R Ruby 1224
#GAR Predestined
+GAR Precision 3514

CED		BW		WW		YW		MILK	
I+10	.05	I+.8	.05	I+65	.05	I+115	.05	I+32	.05
CWT	I+29	MB	I+1.30	RE	I+.81	FAT	I+.026		
SW	+52.43	SF	+60.92	\$G	+54.68	\$B	+102.90		

58A Crazy K Ruby of Tiffany 3341

Birth Date: 9-12-2013
Connealy Tobin
Connealy Confidence 0100
16761479 Becka Gala of Conanga 8281

Cow 17705002
#Bon View New Design 208
Delia of Conanga 667
#Connealy Thunder [RDF]
Becka Lee of Conanga 37

Summitcrest Complete 1P55 [RDF]
Crazy K Ruby of Tiffany 1576
17014599 +B/R Ruby of Tiffany 5162

#CF Right Design 1802
Summitcrest Elba 1M17
#B/R Destination 727-928
+B/R Ruby of Tiffany 1210

CED		BW		VW		YW		MILK	
S+19	.86	-3.1	.94	+48	.91	+90	.82	+29	.23
I+6	.05	I+2.1	.05	I+44	.05	I+81	.05	I+30	.05
S-CWT	S-MRB	S-RE	S-Fat	D-CWT	D-MRB	D-RE	D-Fat		
+20	+55	+1.21	+0.033	I+38	I+69	I+1.04	I-.002		
S-SW	S-SF	S-SG	S-SB	D-SW	D-SF	D-SG	D-SB		
+44.56	+35.95	+41.82	+76.78	+29.13	+26.42	+45.02	+99.60		

Predestined 1121



Bridges Predestined 1121 / Lot 59



GAR Expectation 2323 / The powerful donor dam of Lot 59.

59 Bridges Predestined 1121 [DDF]

Birth Date: 9-5-2011

Cow +17110175

Tattoo: 1121

#B/R New Design 036

#VDAR New Trend 315

GAR Predestined

B/R Blackcap Empress 76

#13395344 #+GAR Ext 4206

#N Bar Emulation EXT

+GAR 6807 Traveler 1432

#+GAR Expectation 4915

#N Bar Emulation EXT

GAR Expectation 2323

GAR Traveler 2421

+14504663 +GAR Precision 819

#GAR Precision 1680

+GAR 6807 Traveler 673

CED	BW	WW	YW	MILK
+5	.30	+3.6	.36	+56
.30	.36	.30	.29	.28
.26	.26	.26	.26	.26
CWT	+40	MB	+1.06	RE
SW	+38.23	\$F	+43.73	\$G
				+45.00
				\$B
				+102.29

- Predestined 1121 is a powerful first calf heifer sired by Predestined and produced by the foundation Rita in the Jac's Ranch donor program, Expectation 2323.
- Predestined 1121 posts ultrasound ratios IMF 100 and REA 108. The dam of Lot 59 records a WR 3@103 and a YR 3@101 while showing ultrasound ratios IMF 59@102 and REA 59@102 with 14 daughters maintaining a combined WR 28@103.
- Predestined N777, a full sister to Lot 59 is a member of the Huck and Dreamcatcher Genetics embryo program and she produced the REA leader in the Wehrmann Genetics program, New Day 3070. Maternal sisters to Lot 59 include the 2013 Family Tradition headliners: Rita 2100 and Rita 2141 selling to Triple JQ Angus for \$6,000 each.
- Has a 10/3/13 heifer calf, Lot 59A, by GAR Prophet.
- Bred 1/23/14 to VAR Confirmed CKR 1269.

59A Crazy K Rita 3354

Birth Date: 10-3-2013

Cow 17704853

Tattoo: 3354

#CRA Bextor 872 5205 608

#BAR Ext Traveler 205

GAR Prophet

Cra Lady Jaye 608 498 S Easy

+16295688 +GAR Objective 1885

#SS Objective T510 0T26

GAR 1407 New Design 2232

#GAR Predestined

#B/R New Design 036

Bridges Predestined 1121

#+GAR Ext 4206

+17110175 +GAR Expectation 2323

#+GAR Expectation 4915

+GAR Precision 819

CED	BW	WW	YW	MILK
I+9	.05	I+1.8	.05	I+68
.05	.05	.05	.05	.05
.05	.05	.05	.05	.05
CWT	I+36	MB	I+1.37	RE
SW	+50.35	\$F	+62.10	\$G
				+51.81
				\$B
				+107.22



GAR Precision 819 /

The \$250,000 grandam of Lot 59.

Primrose 1291



VAR Primrose 1291 /
Lot 60



N Bar Primrose 2424 / A granddaughter of this \$100,000
herd sire producer sells as Lot 60.

60 V A R Primrose 1291 [DDF]

Birth Date: 9-5-2011

Cow +17002849

Tattoo: 1291

Connealy Reflection
Connealy Impression
15543702 Pearl Pammy of Conanga 194

#Bon View New Design 878
Happy Grill of Conanga 6260
#Vermilion Dateline 7078
Pearl Jam of Conanga 6114

#B/R New Design 323
VAR Primrose 4770
^15050438 N Bar Primrose 2424

#B/R New Design 036
B/R Ruby of Tiffany 155
#Emulation 31 [DWF-RDF]
Primrose N Bar 9962

CED	BW	WW	YW	MILK
+9	.33	+1.3	.36	+48
.30	.80	.33	+27	.25
CWT	MB	RE	FAT	
+20	.73	+1.00	-.011	
SW	SF	SG	SB	
+37.94	+23.24	+48.86	+82.92	

- Primrose 1291 is a first calf heifer from the herd sire producing Primrose family and she blends Impression with the foundation Primrose in the Althaus Angus program, Primrose 4770.
- The donor dam of Lot 60 is a genetic replica of the former second-generation Vintage Angus Ranch donor, Primrose 0312 and records a BR 4@97 and a WR 4@103 while carrying an ultrasound REA ratio 6@102 with five daughters maintaining a combined WR 6@103.
- Maternal siblings to the dam of Lot 60 include: EXT, the legendary female sire; Primrose 1247, the \$280,000 cornerstone Primrose in the Deer Valley Farm program; New Look 2971, the former Express Ranches herd sire; and Primrose J237, the longtime member of the Double R Bar Ranch donor program.
- Has a 8/30/13 heifer calf, Lot 60A, by Connealy Confidence 0100.
- Due 9/5/14 to GAR Prophet.

60A Crazy K Primrose 3314

Birth Date: 8-30-2013

Cow 17705004

Tattoo: 3314

Connealy Tobin
Connealy Confidence 0100
16761479 Becka Gala of Conanga 8281

#Bon View New Design 208
Delia of Conanga 667
#Connealy Thunder [RDF]
Becka Lee of Conanga 37

Connealy Impression
VAR Primrose 1291
+17002849 ^VAR Primrose 4770

Connealy Reflection
Pearl Pammy of Conanga 194
#B/R New Design 323
N Bar Primrose 2424

CED	BW	WW	YW	MILK
1+14	.05	1-.9	.05	1+48
.05	.05	1+85	.05	1+28
CWT	MB	RE	FAT	
1+20	.64	1+1.11	1-.011	
SW	SF	SG	SB	
+43.52	+29.52	+45.57	+79.83	



Roth Primrose 1247 /
The \$280,000 maternal sister to the
dam of Lot 60 featured in the Deer
Valley Farm program.

Fall Pairs



Deer Valley Rita 0616 /
Lot 61



Deer Valley Tiffany 0741 /
Lot 62

61

Deer Valley Rita 0616

Birth Date: 8-27-2010

Cow 16719485

Tattoo: 0616

GAR Ultimate
15464043 +GAR Load Up 1314

#SS Traveler 6807 T510
SS Miss Rita R011 7R8
RAB-GAR Load Up 4049J
+GAR New Design 80

#Stevenson MoneyMaker R185
Deer Valley Rita 8502
+16121825 +GAR Ext 614

#Boyd On Target 1083
#Stevenson Clova Pride L888
#N Bar Emulation EXT
+GAR Scotch Cap 309

CED	BW	WW	YW	MILK
+10	.36	+1.4	.42	+60
.34	.99	.33	+29	.27
CWT	MB	RE	FAT	
+24	+71	+69	+039	
SW	\$F	\$G	\$B	
+46.10	+41.66	+40.04	+80.43	

- Rita 0616 blends the \$100,000 Deer Valley Farm herd sire, Ultimate with the \$200,000 valued former member of the Deer Valley Farm and Express Ranches donor program, Rita 8502.
- Rita 0616 posts a WR 1@116. The dam of Lot 61 balances a BR 1@93 with a YR 1@100. The dam of Lot 61 is a direct daughter of the breed's second all-time high income producer and legendary Deer Valley Farm donor, EXT 614 sired by the \$810,000 valued former Express Ranches and SandPoint Cattle Company sire, MoneyMaker R185.
- Has a 9/25/13 heifer calf, Lot 61A, by 44 Conveyance 0X52.
- Due 9/6/14 to AAR Ten X 7008 SA.

61A

Crazy K Rita 3347

Birth Date: 9-25-2013

Cow 17739370

Tattoo: 3347

+Werner War Party 2417
44 Conveyance 0X52
+16645185 B/R Blackcap Empress 127

#Connealy Onward
+BAAR USA Lady Jaye 489
#B/R Destination 727
#B/R Blackcap Empress 8183

GAR Ultimate
Deer Valley Rita 0616
16719485 +Deer Valley Rita 8502

#SS Objective T510 0T26
+GAR Load Up 1314
#Stevenson MoneyMaker R185
+GAR Ext 614

CED	BW	WW	YW	MILK
+5	.05	+2.5	.05	+63
.05	+1.02	.05	+30	.05
CWT	MB	RE	FAT	
+40	+95	+76	+023	
SW	\$F	\$G	\$B	
+43.07	+44.11	+45.78	+103.13	

62

Deer Valley Tiffany 0741 [DDF]

Birth Date: 9-15-2010

Cow +16870450

Tattoo: 0741

#+GAR Grid Maker
SAV Bismarck 5682 [RDF]
+15109865 SAV Abigale 0451

#GDAR Traveler 044
GAR Precision 2536
#Schoenes Fix It 826
SAV Abigale 6062

#KCF Bennett Performer
Three Trees Tiffany T1718
15715444 +Three Trees Tiffany 1942

#Hyline Right Time 338
KCF Miss 589 L182
#B/R New Design 036
B/R Ruby of Tiffany 155

CED	BW	WW	YW	MILK
+7	.31	+2.3	.44	+67
.35	+11	.34	+29	.27
CWT	MB	RE	FAT	
+30	+71	+71	+002	
SW	\$F	\$G	\$B	
+44.34	+54.25	+43.00	+91.36	

- Tiffany 0741 is a direct daughter of the \$216,000 valued anchor of the Tiffany family in the joint embryo programs of BoBo Angus and Deer Valley Farm, Tiffany T1718 and is sired by the longtime headliner of the Genex roster, Bismarck 5682.
- Tiffany 0741 posts a WR 1@102 while showing ultrasound ratios IMF 1@111 and REA 1@103. The dam of Lot 62 records a WR 2@110 while carrying an ultrasound REA ratio 25@101 with two daughters maintaining a combined WR 2@101.
- Has a 9/3/13 heifer calf, Lot 62A, by Connealy Confidence 0100.
- Due 9/8/14 to VAR Reserve 1111.

62A

Crazy K Tiffany 3323

Birth Date: 9-3-2013

Cow 17705013

Tattoo: 3323

Connealy Tobin
Connealy Confidence 0100
16761479 Becka Gala of Conanga 8281

#Bon View New Design 208
Della of Conanga 667
#Connealy Thunder [RDF]
Becka Lee of Conanga 37

+SAV Bismarck 5682 [RDF]
Deer Valley Tiffany 0741
+16870450 Three Trees Tiffany T1718

#+GAR Grid Maker
SAV Abigale 0451
#KCF Bennett Performer
+Three Trees Tiffany 1942

CED	BW	WW	YW	MILK
+13	.05	+1.4	.05	+58
.05	+1.01	.05	+29	.05
CWT	MB	RE	FAT	
+25	+63	+96	+018	
SW	\$F	\$G	\$B	
+47.78	+45.37	+42.57	+84.49	

Herd Bull Pairs



BoBo Tiffany 0667 /
Lot 64



Woodhill Evergreen 58-1536 /
A granddaughter sells as Lot 63.

63 44 Evergreen X512

Birth Date: 9-4-2010

Cow 16761729

Tattoo: X512

#Stevenson Moneymaker R185
Stevenson Moneymaker 1427
15696463 Stevenson MS 914A D52L

#Boyd On Target 1083
#Stevenson Clova Pride L888
#Stevenson Bruno 561G
NR MS 914A 5920

B/R 65R Genesis
44 Evergreen 8793
16521398 +Woodhill Evergreen 58-1536

#CA Future Direction 5321
B/R Blackcap Empress 127
#Leachman Right Time
#GT Miss Traveler 58

CED	BW	WW	YW	MILK
I+5	.05	+2.2	.22	+57
CWT	+39	MB	+50	RE
SW	+33.06	SF	+54.07	SG
				SB

Owned by 2 T Cattle Company, Selmer, TN

- Evergreen X512 combines the 44 Farms herd sire, Moneymaker 1427 with a direct daughter of the cornerstone Evergreen in the 44 Farms program, Evergreen 58-1536 sired by carcass and \$B standout, Genesis.
- Evergreen X512 posts individual ratios of 104 for weaning and 108 for yearling. The dam of Lot 63 records a WR 3@103 and a YR 1@108 while carrying an ultrasound IMF ratio 2@100.
- Has a 9/28/13 bull calf, Lot 63A, by AAR Ten X 7008 SA.
- Exposed 1/8/14 to 4/1/14 to 2T Consensus 2003.

64 BoBo Tiffany 0667 [DDF]

Birth Date: 10-11-2010

Cow +16928913

Tattoo: 0667

#+SAF Connection
SydGen CC&7
#15330743 SydGen Forever Lady 4087

#+SVF Gdar 216 LTD
+SAF Royal Queen 5084
#SydGen 1407 Corona 2016
+SAF Forever Lady 8292

#B/R New Design 036
Three Trees Tiffany 1942
+14150698 B/R Ruby of Tiffany 155

#VDAR New Trend 315
B/R Blackcap Empress 76
VDAR Pine Drive 251
Tiffany BR

CED	BW	WW	YW	MILK
I+7	.05	+1.6	.31	+39
CWT	+29	MB	+85	RE
SW	+24.71	SF	+27.61	SG
				SB

- Tiffany 0667 is the first of two full sisters combining the featured Sydenstricker Genetics herd sire highlight, CC&7 with the prolific full sister to New Design 323 and former BoBo Angus donor, Ruby of Tiffany 1942.
- Tiffany 0667 posts an ultrasound REA ratio 1@101. The dam of Lot 64 shows an ultrasound IMF ratio 73@111. A full sister sells as Lot 65 and a maternal sister, Tiffany T1718 was the \$108,000 half interest selection of Deer Valley Farm as the top-selling female of the past BoBo Angus Sale and her daughter sells as Lot 62 in this offering.
- Has a 9/7/13 bull calf, Lot 64A, by 44 Conveyance 0X52.
- Due 9/25/14 to EXAR Upshot 0562B.

63A 2T Ten X 3016

Birth Date: 9-28-2013

Bull 17718465

Tattoo: 3016

#Mytty In Focus [RDF]
AAR Ten X 7008 SA
15719841 #AAR Lady Kelton 5551

#SAF Focus of ER
Mytty Countess 906
SAV Adaptor 2213
+HSAF Lady Kelton 504B

Stevenson Moneymaker 1427
44 Evergreen X512
16761729 44 Evergreen 8793

#Stevenson Moneymaker R185
Stevenson MS 914A D52L
B/R 65R Genesis
+Woodhill Evergreen 58-1536

CED	BW	WW	YW	MILK
N/A	N/A	I+1.2	.05	I+62
CWT	I+49	MB	I+90	RE
SW	+31.71	SF	+71.18	SG
				SB

64A Crazy K Conveyance 3333

Birth Date: 9-7-2013

Bull 17739361

Tattoo: 3333

+Werner War Party 2417
44 Conveyance 0X52
+16645185 B/R Blackcap Empress 127

#Connealy Onward
+BAAR USA Lady Jaye 489
#B/R Destination 727
#B/R Blackcap Empress 8183

#SydGen CC&7
BoBo Tiffany 0667
+16928913 +Three Trees Tiffany 1942

#+SAF Connection
SydGen Forever Lady 4087
#B/R New Design 036
B/R Ruby of Tiffany 155

CED	BW	WW	YW	MILK
N/A	N/A	I+2.6	.05	I+52
CWT	I+42	MB	I+1.02	RE
SW	+31.72	SF	+36.53	SG
				SB

Tiffany 0665



BoBo
Tiffany 0665 /
Lot 65

65 BoBo Tiffany 0665 [DDF]

Birth Date: 10-11-2010
#SAF Connection
SydGen CC&7
#15330743 SydGen Forever Lady 4087

Cow +16928912
#SVF Gdar 216 LTD
+SAF Royal Queen 5084
#SydGen 1407 Corona 2016
+SAF Forever Lady 8292

#B/R New Design 036
Three Trees Tiffany 1942
+14150698 B/R Ruby of Tiffany 155

#VDAR New Trend 315
B/R Blackcap Empress 76
VDAR Pine Drive 251
Tiffany BR

CED	BW	WW	YW	MILK
+8	.28	+1.3	.31	+41
.30	+82	.30	+31	.28
CWT	+31	MB	+81	RE
			+63	FAT
SW	+27.34	SF	+29.16	SG
			+46.63	SB
				+94.43

- Tiffany 0665 is a powerful anchor to the first-ever offering from Crazy K Ranch and she blends the DOC and maternal sire featured in the Sydenstricker Genetics herd sire lineup, CC&7 with the former prolific cornerstone BoBo Angus donor, Tiffany 1942.
- Tiffany 0665 records a WR 1@106 and a YR 1@105 while showing an ultrasound REA ratio 1@110. Full siblings to the dam of Lot 65 include: New Design 323 the 44 Farms herd sire battery member; Ruby of Tiffany 1210, the grandam of Lot 58; the \$102,000 valued former Anderson Circle Farm donor, Ruby of Tiffany 722; and the herd sire producing grandam of the MB and \$B sire, Ambush 28, Ruby of Tiffany 8250.
- Has a 9/3/13 bull calf, Lot 65A, by AAR Ten X 7008 SA.
- Has a 9/9/12 heifer, Lot 65B, by Werner War Party 2417.
- Due 9/25/14 to VAR Reserve 1111.



65A Crazy K Ten X 3320

Birth Date: 9-3-2013
#Mytty In Focus [RDF]
AAR Ten X 7008 SA
15719841 #AAR Lady Kelton 5551

Bull 17693323
#SAF Focus of ER
Mytty Countess 906
SAV Adaptor 2213
+HSAF Lady Kelton 5048

#SydGen CC&7
BoBo Tiffany 0665
+16928912 +Three Trees Tiffany 1942

#SAF Connection
SydGen Forever Lady 4087
#B/R New Design 036
B/R Ruby of Tiffany 155

CED	BW	WW	YW	MILK
I-9	.05	I-7	.05	I-54
.05	I-109	.05	I-31	.05
CWT	I-45	MB	I-1.06	RE
			I-1.68	FAT
SW	+38.76	SF	+58.47	SG
			+49.73	SB
				+112.72

65B Crazy K Tiffany 2111

Birth Date: 9-6-2012
#Connealy Onward
Werner War Party 2417
+16004857 +BAAR USA Lady Jaye 489

Cow 17401697
#Connealy Lead On
Altune of Conanga 6104
#BAR Ext Traveler 205
Cra Lady Jaye 608 498 S Easy

#SydGen CC&7
BoBo Tiffany 0665
+16928912 +Three Trees Tiffany 1942

#SAF Connection
SydGen Forever Lady 4087
#B/R New Design 036
B/R Ruby of Tiffany 155

CED	BW	WW	YW	MILK
+9	.30	+1.1	.34	+56
.32	+105	.35	+36	.22
CWT	+43	MB	+59	RE
			+92	FAT
SW	+42.44	SF	+51.85	SG
			+39.28	SB
				+99.48

- Tiffany 2111 posts a weaning ratio of 106 and a yearling ratio of 105 while showing an ultrasound REA ratio of 110.
- Due 8/31/14 to VAR Confirmed CKR 1269.

Crazy K Tiffany 2111 /
Lot 65B



Crazy K Herd Sires



VAR Confirmed CKR 1269 / Reference Sire A



44 Conveyance 0X52 / Reference Sire B

A VAR Confirmed CKR 1269 [AMF-CAF-DDF-NHF]

Birth Date: 9-1-2011

Bull 17001883

Tattoo: 1269

Connealy Consensus
Connealy Consensus 7229
16447771 Blue Lilly of Conanga 16

#KMK Alliance 6595 I87
Blinda of Conanga 004
#Woodhill Admiral 77K
Blue Cash of Conanga 6020

#+GAR New Design 5050
VAR Rita 9302
+16356371 GAR Objective 2345

#B/R New Design 036
GAR Precision 706
#SS Objective T510 0T26
+GAR 1407 New Design 2413

CED	BW	WW	YW	MILK
+10	.40	+1.7	.46	+70
.35	.121	.37	.39	.22
CWT	MB	RE	FAT	
+38	+82	+1.01	-0.14	
SW	SF	SG	SB	
+49.36	+66.70	+49.08	+107.28	

Owned with Vintage Angus Ranch, Modesto, CA

B 44 Conveyance 0X52 [DDF]

Birth Date: 2-11-2010

Bull +16645185

Tattoo: 0X52

#Connealy Onward
Werner War Party 2417
+16004857 +BAAR USA Lady Jaye 489

#Connealy Lead On
Altune of Conanga 6104
#BAR Ext Traveler 205
Cra Lady Jaye 608 498 S Easy

#B/R Destination 727
B/R Blackcap Empress 127
13879676 #B/R Blackcap Empress 8183

#GAR Traveler 1489
B/R Ruby of Tiffany 5113
#B/R New Design 323
B/R Blackcap Empress 558

CED	BW	WW	YW	MILK
+0	.52	+3.6	.73	+65
.62	+104	.48	+31	.27
CWT	MB	RE	FAT	
+57	+1.18	+83	+0.04	
SW	SF	SG	SB	
+38.90	+45.76	+50.07	+120.06	

Owned with 44 Farms, Cameron, TX and Conveyance Breeders, Seaman, OH



EXAR Significant 1769B / Reference Sire C



44 CKR King James X005 / Reference Sire D

C EXAR Significant 1769B [AMF-CAF-DDF-NHF]

Birth Date: 3-8-2011

Bull +16884386

Tattoo: 1769B

Connealy Consensus
Connealy Consensus 7229
16447771 Blue Lilly of Conanga 16

#KMK Alliance 6595 I87
Blinda of Conanga 004
#Woodhill Admiral 77K
Blue Cash of Conanga 6020

#Connealy Onward
Sitz Henrietta Pride 643T
+15836552 Sitz Henrietta Pride 81M

#Connealy Lead On
Altune of Conanga 6104
#Sitz Value 7097
Sitz Henrietta Pride 1370

CED	BW	WW	YW	MILK
+7	.53	+2.2	.74	+61
.63	+96	.40	+33	.24
CWT	MB	RE	FAT	
+48	+64	+1.18	-0.21	
SW	SF	SG	SB	
+46.19	+37.20	+44.95	+108.80	

Owned with Express Ranches, Yukon, OK and The Significant Group, Yukon, OK

D 44 CKR King James X005 [DDF-NHF]

Birth Date: 1-1-2010

Bull 16752013

Tattoo: X005

#SS Objective T510 0T26
44 King James 7526
15978584 +Clifton Young Lucy 3240

#SS Traveler 6807 T510
SS Miss Rita R011 7R8
#CA Future Direction 5321
B/R Young Lucy 821

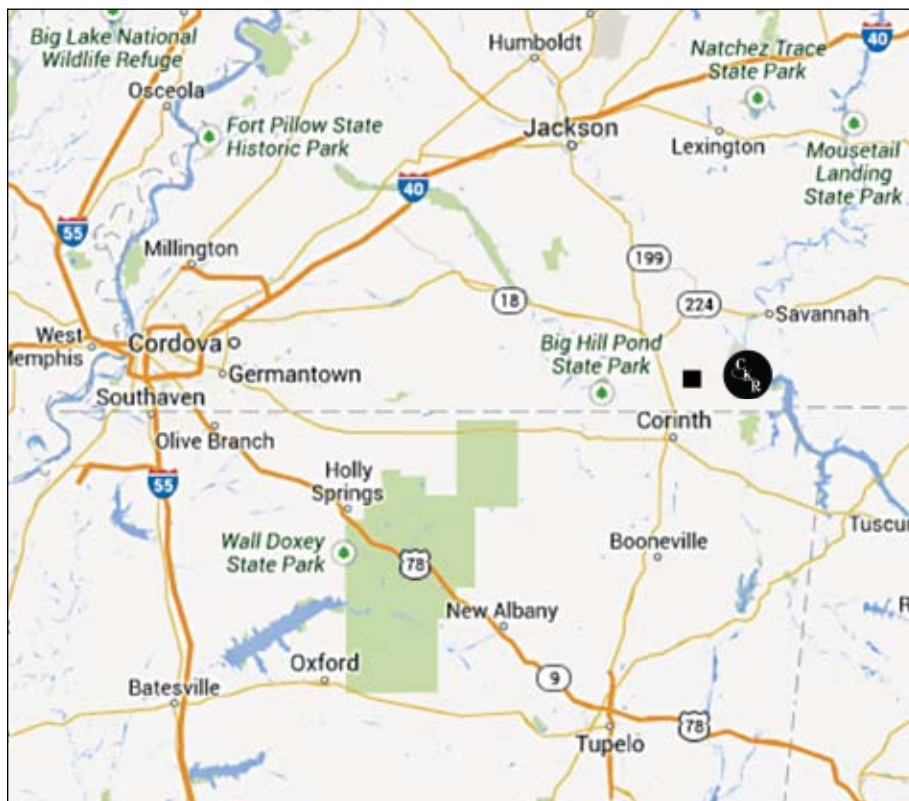
#GAR Predestined
Limestone Primrose T676
+16034259 +VAR Primrose 4044

#B/R New Design 036
#+GAR Ext 4206
#Summitcrest High Prime 0H29
+VAR Primrose 0312

CED	BW	WW	YW	MILK
+16	.46	+0	.58	+54
.50	+90	.45	+26	.17
CWT	MB	RE	FAT	
+22	+1.40	+1.09	-0.13	
SW	SF	SG	SB	
+39.26	+32.94	+63.87	+101.08	

Owned with 44 Farms, Cameron, TX

Map & Directions



**833 North Prather Rd
Michie, TN 38357**

Crazy K Ranch is located just west of Michie, TN. We are conveniently located near Pickwick Lake and easily accessible to Jackson, TN and Corinth, MS.



LARRY COTTON 517-294-0777
 RYAN COTTON 706-206-8361
 MIKE GOTHARD 540-894-1055
 JERRY CRENSHAW 703-244-4767
 ZACK HILEMAN 540-460-2776
 SCOTT BENNETT 434-660-7268

Welcome Angus Breeders,

The inaugural Crazy K Ranch female sale will truly be an exciting event. The building of this program has been very impressive; this event will showcase the operation and the quality of Angus cattle they have built. Sammy and Sherry Kiser along with Charlie Adkins are wonderful people that have been embraced by the Angus community, and we invite everyone to attend this inaugural event at their new facility. Crazy K Ranch's top priority is a commitment to breeding cattle that meet the needs of the industry and this commitment will be showcased in volume at this event. The business continues to advance with the technologies that are available and at Crazy K, production, performance and carcass traits have always been key. We feel this program has bred tremendous cattle and the opportunity to do business with these fine people is worth looking at.

As you build an operation with an extensive ET program in place, females will be offered that come right out of the top of the herd. Breed leading genetics including Lots 1A and 1B, two females sired by Connealy Confidence 0100 and Summitcrest Complete IP55, out of the great Sitz Henrietta Pride 643T will be offered. One-half interest sells in another elite female, Deer Valley Blackcap 3172 who is sired by 10X and has a \$B value of \$119.09. A full sib to EXAR Upshot will be sold, along with many other trait leading females. These are just a few of the great cow families represented as well as a solid set of bred heifers, yearling females, bred cows and pregnancies. The attention to quality has been a top priority, and as you evaluate this book you will see the depth that this young program has put together. In just a very short time they have acquired and bred elite genetics, and this inaugural sale will truly be impressive.

Our involvement with everyone at Crazy K Ranch has been wonderful, and we encourage everyone to meet these fine people. As the industry grows it is always great to have new breeders get in the business. At Crazy K you will find an operation that is in it for the long haul. Hospitality has always been an important part of Crazy K, and when you visit they always welcome everyone with open arms. There will be something for everyone, so please join us April 13, 2014 in Michie, Tennessee, for their inaugural sale during a fun Angus weekend. We will be at the sale site early in the week, so feel free to contact us for any information.

Regards,

Larry Cotton *Ryan Cotton* *Mike Gothard* *Jerry Crenshaw* *Zack Hileman* *Scott Bennett*
 Larry Cotton Ryan Cotton Mike Gothard Jerry Crenshaw Zack Hileman Scott Bennett



LARRY COTTON



RYAN COTTON



MIKE GOTHARD



JERRY CRENSHAW



ZACK HILEMAN



SCOTT BENNETT



crazykranch@hotmail.com

www.crazykranch.com

CRAZY K RANCH

Sammy and Sherry Kiser, Owners

833 North Prather Road • Michie, TN 38357

Phone 731-239-5742

Charlie Adkins, Manager 731-439-7350

David Cagle, 731-453-5262

SALE MANAGED BY:



LARRY COTTON	517-294-0777
RYAN COTTON	706-206-8361
MIKE GOTHARD	540-894-1055
JERRY CRENSHAW	703-244-4767
ZACK H LEMAN	540-460-2776
SCOTT BENNETT	434-660-7268

VIEW/BID LIVE ON THE INTERNET:

LiveAuctions.TV

<http://www.LiveAuctions.tv>
call Brad Fahrmeier for details: 816.392.9241

We Look Forward to Seeing You!
First Annual Production Sale