



CRAZY K RANCH

***FALL FEMALE
OPPORTUNITY SALE***



SATURDAY, SEPTEMBER 12, 2020 AT NOON
AT THE RANCH IN MICHIE, TENNESSEE



CRAZY K RANCH

833 N PRATHER ROAD MICHIE, TENNESSEE

On behalf of everyone here at Crazy K Ranch, we would like to take this opportunity to invite you to join us for our **2020 Fall Female Opportunity Sale**.

This year, we have chosen many highlights for Angus breeders to evaluate. There are **multiple proven donors**, as well as donors in the making, that are ready to be bred and used to their full potential. Lot 7 and Lot 8 are heifer pregnancies that we have selected from elite donors in our Crazy K Ranch Donor program. We will also be offering Fall Pairs, Fall Yearling Heifers, Spring Bred Cows and Spring Heifers.

It's been proven over time that history repeats itself. Remarkably, the cattle industry has continued to thrive during these unconventional and challenging times. Farmers and ranchers once again have proven to be resilient and steadfast. The uncertainty that Covid-19 brings with it has forced us to make adjustments to our traditional way of doing things.

Because traveling has become more difficult, we will be offering services to accommodate everyone's varying needs. We will video all cattle prior to the sale and will post for viewing on our website at www.crazykranch.com. If any additional film is needed, please feel free to contact us and we will be glad to help. We will also provide live online bidding as well as real time bidding via the phone during the sale for your convenience.

We would like to welcome back Gobbell Farms and Optum Angus to this year's sale. We are always glad to have them consign great Angus cattle to our event each year and we are proud to have them!

We look forward to seeing everyone, Saturday, September 12, 2020 at the Ranch! Feel free to contact us with any questions you may have.

Sincerely,

Sammy & Sherry Kiser, Owners
Charlie Adkins, Manager (731) 439-7350



AUCTIONEER



Steve Dorran (760) 972-7736

RINGMEN

Terry Cotton (816) 390-3227
 Juston Stelzer (817) 992-7059
 Shane Ryan (309) 371-7490
 Alex Tolbert (706) 338-8733

SALE CONSULTANT

Tom Dalbey (404) 372-0973

Buyers unable to attend the sale may send their bids to the sale staff at any time, or call the sale day phone numbers.

UPDATES AND ANNOUNCEMENTS

A supplemental update sheet will be available sale day with up-to-date information. All announcements made from the auction block take precedence over printed matter in this sale book.

TERMS & CONDITIONS

Settlement expected sale day unless prior arrangements are made before the sale. All cattle sell under the terms and conditions as recommended by the American Angus Association relating to genetic defects.

PREGNANCY EXAMINATION INFORMATION

All cattle have been pregnancy checked by a competent veterinarian and are called safe to the A.I. or pasture dates as best can be determined by advanced palpation. In respect to A.I. dates, they are not unconditionally guaranteed, other than the fact they are pregnant.

HERD HEALTH

All cattle will be accompanied by proper health certificates for immediate shipment.

TRUCKING

Truckers believed to be reliable will be available to assist you sale day.

INSURANCE

Available at clerk's desk.

SALE DAY PHONE
 Charlie Adkins 731-439-7350

Fall Female Opportunity Sale September 12, 2020 Michie, TN • Noon

SALE MANAGED BY

For information on sale cattle, please contact one of our associates:



Larry Cotton	517-294-0777
Ryan Cotton	706-206-8361
Mike Gothard	540-894-1055
Jerry Crenshaw	703-244-4767
Zack Hileman	540-460-2776

SALE LOCATION

833 North Prather Road • Michie, TN 38357
 Map and directions are on the inside back cover.

HOTEL ACCOMMODATIONS

Blocks reserved until September 1st

- Holiday Inn Express Hotel & Suites (662) 287-1407
 2106 US Hwy 72 W, Corinth, MS 38835

Approx. 16 miles from ranch

Blocks reserved until September 1st

- Hampton Inn (662) 286-5949
 2107 US 72, Corinth, MS 38834

Approx. 16 miles from ranch

AIRPORTS

- Memphis International Airport
 2491 Winchester Rd, Memphis, TN
Approx. 104 miles from ranch • 1 hour 50 minutes

- Nashville International Airport
 1 Terminal Dr., Nashville, TN
Approx. 166 miles from ranch • 3 hours

FOOD AND REFRESHMENTS

Lunch will be served at 11 a.m.

ANGUS MEDIA

Visit the *Angus Journal*® Web site, www.angusjournal.com, and view this sale book online.

References: American Angus Association®, AHIR®, Angus-Source®, CAB®, Pathfinder®.

EPDs current as of July 22, 2020. Updated EPDs can be viewed online at www.angus.org.

Videos of sale cattle will be available the week of the sale at www.crazykranch.com

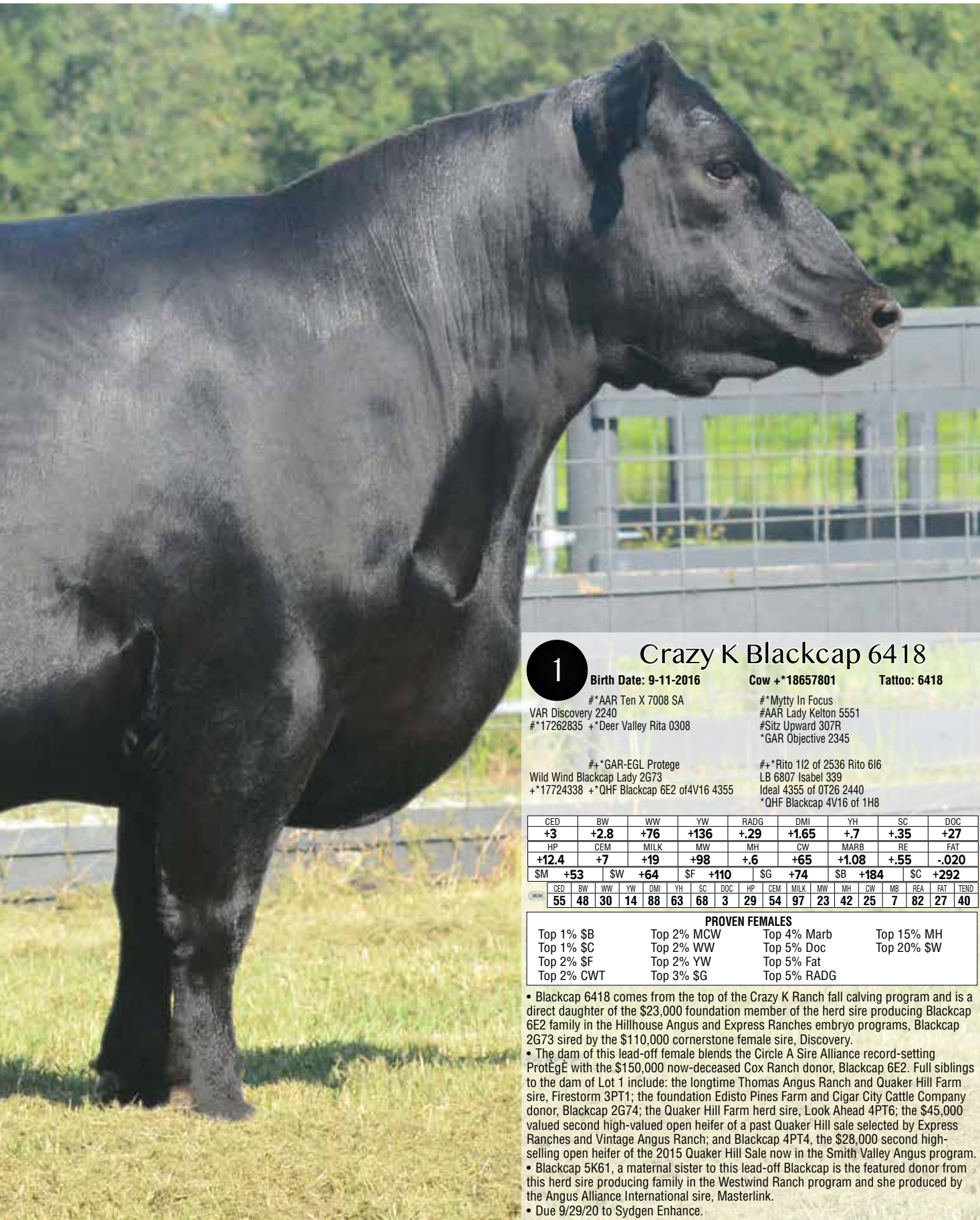


Bid Live Online
"Gavel's Down, The Best!"

(516) 366-0734 CCI.live schedule@cci.live

Blackcap 6418





1

Crazy K Blackcap 6418

Birth Date: 9-11-2016 **Cow #** *18657801 **Tattoo:** 6418

#*AAR Ten X 7008 SA
VAR Discovery 2240
#*17262835 +*Deer Valley Rita 0308

#*GAR-EGL Protege
Wild Wind Blackcap Lady 2G73
+*17724338 +*QHF Blackcap 6E2 of 4V16 4355

#*Mytty In Focus
#AAR Lady Kelton 5551
#Sitz Upward 307R
*GAR Objective 2345

#*Rito 112 of 2536 Rito 616
LB 6807 Isabel 339
Ideal 4355 of OT26 2440
*QHF Blackcap 4V16 of 1H8

CED	BW	WW	YW	RADG	DMI	YH	SC	DOC									
+3	+2.8	+76	+136	+29	+1.65	+7	+35	+27									
HP	CEM	MILK	MW	MH	CW	MARB	RE	FAT									
+12.4	+7	+19	+98	+6	+65	+1.08	+55	-.020									
\$M	+53	\$W	+64	\$F	+110	\$G	+74	\$B	+184	\$C	+292						
CED	BW	WW	YW	DMI	YH	SC	DOC	HP	CEM	MILK	MW	MH	CW	MB	REA	FAT	TEND
55	48	30	14	88	63	68	3	29	54	97	23	42	25	7	82	27	40

PROVEN FEMALES

Top 1% \$B

Top 2% MCW

Top 4% Marb

Top 15% MH

Top 1% \$C

Top 2% WW

Top 5% Doc

Top 20% \$W

Top 2% \$F

Top 2% YW

Top 5% Fat

Top 2% CWT

Top 3% \$G

Top 5% RADG

- Blackcap 6418 comes from the top of the Crazy K Ranch fall calving program and is a direct daughter of the \$23,000 foundation member of the herd sire producing Blackcap 6E2 family in the Hillhouse Angus and Express Ranches embryo programs, Blackcap 2G73 sired by the \$110,000 cornerstone female sire, Discovery.
- The dam of this lead-off female blends the Circle A Sire Alliance record-setting ProtEgE with the \$150,000 now-deceased Cox Ranch donor, Blackcap 6E2. Full siblings to the dam of Lot 1 include: the longtime Thomas Angus Ranch and Quaker Hill Farm sire, Firestorm 3PT1; the foundation Edisto Pines Farm and Cigar City Cattle Company donor, Blackcap 2G74; the Quaker Hill Farm herd sire, Look Ahead 4PT6; the \$45,000 valued second high-valued open heifer of a past Quaker Hill sale selected by Express Ranches and Vintage Angus Ranch; and Blackcap 4PT4, the \$28,000 second high-selling open heifer of the 2015 Quaker Hill Sale now in the Smith Valley Angus program.
- Blackcap 5K61, a maternal sister to this lead-off Blackcap is the featured donor from this herd sire producing family in the Westwind Ranch program and she produced by the Angus Alliance International sire, Masterlink.
- Due 9/29/20 to Sydgen Enhance.

Rita 9205





2

Crazy K Rita 9205
Birth Date: 9-26-2019
Cow #*19545804
Tattoo: 9205
 #*Basin Payweight 1682
 Basin Payweight Plus 6048
 *18511911 +*EXAR Royal Lass 2810
 #*VAR Discovery 2240
 Crazy K Rita 5021
 +*18042174 +*SJH Complete of 6108 1564
 #*Basin Payweight 006S
 21AR O Lass 7017
 #*Connealy Consensus 7229
 +Exar Royal Lass 1067
 #*AAR Ten X 7008 SA
 +*Deer Valley Rita 0308
 #*Summitcrest Complete 1P55
 +DRMCTR 111 Rita 6108

CED	BW	WW	YW	RADG	DMI	YH	SC	DOC									
+11	+1.0	+74	+128	+24	+1.69	+3	+1.54	+27									
HP	CEM	MILK	MW	MH	CW	MARB	RE	FAT									
+11.7	+12	+42	+32	+3	+55	+1.10	+84	+0.10									
\$M	+89	\$W	+101	\$F	+85	\$G	+76	\$B	+161	\$C	+298						
32	64	11	19	95	65	4	12	17	51	2	59	39	21	5	20	72	32

NON-PARENT FEMALES
 Top 1% \$M Top 3% \$G Top 10% SC Top 15% CEM
 Top 1% \$W Top 10% \$B Top 10% WW Top 15% REA
 Top 1% Milk Top 10% Doc Top 10% YW Top 20% CWT
 Top 2% \$C Top 10% Marb Top 15% CED

Crazy K Rita 5021 /
The \$137,500 dam of Lot 2 featured
in the Riverbend Ranch program.





Spruce Mtn Rita 5806 /
The dam of Lot 4.



SJH Complete of 6108 1564 / The \$3 million producing
grandam of Lots 2 and 3.

3

Crazy K Rita 7349

Birth Date: 11-27-2017

Cow #*19005592

Tattoo: 7349

#*GAR-EGE Protege
Quaker Hill Firestorm 3PT1
+*1786050 +*QHF Blackcap 6E2 of 4V16 4355

#*Rito 112 of 2536 Rito 616
LB 6807 Isabel 339
Ideal 4355 of OT26 2440
*QHF Blackcap 4V16 of 1H8

+*VAR Empire 3037
Crazy K Rita 5169
+*18267921 +*SJH Complete of 6108 1564

#*AAR Ten X 7008 SA
+*EXAR New Design 4212
#*Summitcrest Complete 1P55
+*DRMCTR 111 Rita 6108

CED	BW	WW	YW	RADG	DMI	YH	SC	DOC
+11	+2	+61	+100	+22	+56	+3	+02	+23
HP	CEM	MILK	MW	MH	CW	MARB	RE	FAT
+9.8	+10	+22	+34	-2	+28	+78	+89	-032
\$M	\$W	\$F	\$G	\$B	\$C	\$T	\$D	\$E
+68	+67	+66	+65	+132	+239			

CED	BW	WW	YW	DMI	YH	SC	DOC	HP	CEM	MILK	MW	MH	CW	MARB	RE	FAT	TEND
9	5	77	94	12	97	87	28	65	78	91	96	99	95	30	39	22	90

PROVEN FEMALES

Top 4% Fat	Top 10% CED	Top 15% Marb	Top 20% WW
Top 4% REA	Top 15% \$W	Top 20% \$C	Top 25% BW
Top 10% \$G	Top 15% Doc	Top 20% \$M	

• Rita 7349 comes from the heart of the Crazy K fall calving program and blends the longtime Thomas Angus Ranch feature, Firestorm 3PT1 with a second-generation Crazy K donor, Rita 5169 who now anchors the Stonewall Ridge Farm Rita family.
• The dam of Lot 3 is a direct daughter of the \$100,000 valued 1564 sired by the power sire, Empire 3037 and records a WR 1@105 and a YR 1@118 while showing ultrasound ratios IMF 1@102 and REA 1@103. Maternal sisters to the dam of Lot 3 include: Rita 4417, the \$440,000 top-selling female of the 2016 Spruce Mountain Ranch Sale selected by High Roller Angus; Rita 5383, the \$380,000 valued and top-selling female of the 2016 Vintage Angus Ranch Sale selected by High Roller Angus; Rita 5004, the \$310,000 valued and top-selling female of the 2016 Crazy K Sale selling to Spruce Mountain Ranch; Rita 4291, the \$260,000 valued half interest selection of Venado Creek Angus in the 2017 Crazy K Sale; Rita 7509, the \$200,000 valued half interest selection of Spruce Mountain Ranch in the 2018 Vintage Angus Ranch Sale; Rita 5021, the \$137,500 lead-off female of the 2019 Crazy K Ranch Sale selected by Riverbend Ranch; Rita 6021, the \$95,000 selection of Deer Valley Farm in the 2016 Crazy K Sale; Rita 6079, the \$95,000 selection of Riverbend Ranch in the 2016 Vintage Angus Sale; Rita 5011, the \$85,000 second high-selling bred heifer of the 2016 Vintage Sale selling to EZ Angus Ranch; Rita 7352, the \$72,500 selection of XL Angus Ranch in the 2018 Crazy K Sale; Rita 6078, the \$70,000 featured bred heifer of the 2017 Vintage Angus Ranch Sale selected by XL Angus Ranch; Rita 4283, the \$40,000 selection of Riverbend Ranch as the top-selling two year old of the Woodside Farms dispersal; Rita 5170, the \$35,000 selection of Black Gold Genetics in the 2016 Crazy K Sale; the \$35,000 top-selling heifer pregnancy of the first Crazy K Ranch fall sale selected by EZ Angus Ranch; Rita 9084, the \$30,000 selection of Audley Farms in the 2020 Crazy K Sale; two heifer pregnancies selling in that same offering to Riverbend Ranch for \$26,000 each; Rita 8115 selected by Blue Lake Cattle Ranch in the 2019 Vintage Angus Ranch Sale; Rita 8311 selling in that offering to Belle Point Ranch; and Rita 9028 selected by AAA Farms for \$10,000 in the 2020 Crazy K Sale.
• Due 9/18/20 to EWA West Point 7258.

4

Crazy K Rita 9152

Birth Date: 8-7-2019

Cow #*19498126

Tattoo: 9152

#*Basin Payweight 1682
VAR Power Play 7018
+*18717078 +*Sandpoint Blackbird 8809

#*Basin Payweight 006S
21AR O Lass 7017
#*Connealy Onward
+Riverbend Blackbird 4301

+*Quaker Hill Rampage 0A36
Spruce Mtn Rita 5806
+*18387997 +*DRMCTR 111 Rita 6108

#MCC Daybreak
+*QHF Blackcap 6E2 of 4V16 4355
#*Rito 111 of 2536 Rito 616
+*DRMCTR 2908s Design 2B02

CED	BW	WW	YW	RADG	DMI	YH	SC	DOC
+10	+1.0	+74	+136	+29	+1.44	+4	+51	+28
HP	CEM	MILK	MW	MH	CW	MARB	RE	FAT
+12.1	+16	+15	+96	+6	+46	+96	+65	-002
\$M	\$W	\$F	\$G	\$B	\$C	\$T	\$D	\$E
+48	+62	+85	+68	+153	+247			

CED	BW	WW	YW	DMI	YH	SC	DOC	HP	CEM	MILK	MW	MH	CW	MARB	RE	FAT	TEND
12	41	35	9	82	74	63	4	47	5	98	16	40	62	16	55	33	87

NON-PARENT FEMALES

Top 1% CEM	Top 10% Doc	Top 15% \$B	Top 20% CED
Top 4% YW	Top 10% MCW	Top 15% Marb	Top 25% \$C
Top 10% \$G	Top 10% WW	Top 15% RADG	Top 25% MH

• Rita 9152 is a daughter of the \$300,000 valued feature of the Crazy K Ranch and Spruce Mountain Ranch donor programs, Rita 5806 sired by the \$730,000 Rooney Angus Ranch and Vintage Angus sire, Power Play 7013.
• Rita 5806, the dam of Lot 4 was the top-selling female of the 2016 Spruce Mountain Ranch Sale and she is a direct daughter of the legendary \$5 million producer, Rita 6108 sired by the proven growth, RE and \$B sire, Rampage. Maternal sisters to the dam of Lot 4 include: the now-deceased Rita 1559, the \$350,000 valued half interest selection of Express Ranches and Vista Farms in the 2015 Deer Valley Sale; Rita 5490, the \$290,000 valued half interest selection of Riverbend Ranch as the second high-valued open heifer of the record-setting 2016 Vintage Angus Ranch Sale; Rita 4240, the \$280,000 valued half interest selection of Spruce Mountain Ranch through the 2015 Crazy K Ranch Sale; Rita 6703, the \$260,000 valued headliner of the 44 Farms and Hardwood Farms joint embryo programs; Rita 6108 832, the \$195,000 top-selling female of the 2015 Hillhouse Sale selected by Deer Valley Farm; and Rita 2820, the foundation member of the Blue Lake Cattle Ranch program.



EF Rita 6120 / The \$112,000
top-selling female of the record-setting 2017 Bases Loaded Sale selected by Riverbend Ranch and a maternal sister to the dam of Lot 5.



Bridgeview Rita 1704 /
Lot 6

5

Pollard Rita 7509

Birth Date: 8-22-2017

Cow *18974124

Tattoo: 7509

#*AAR Ten X 7008 SA
VAR Discovery 2240
#*17262835 +*Deer Valley Rita 0308

#*Mytty In Focus
#AAR Lady Kelton 5551
#Sitz Upward 307R
*GAR Objective 2345

#*RB Tour Of Duty 177
EF Rita 5316
+*18233626 +*SJH Complete of 6108 1543

#*Werner War Party 2417
+*BA Lady 6807 305
#*Summitcrest Complete 1P55
+DRMCTR 111 Rita 6108

CED	BW	WW	YW	RADG	DMI	YH	SC	DOC
+4	+2.5	+85	+155	+32	+2.09	+1.0	+1.47	+11
HP	CEM	MILK	MW	MH	CW	MARB	RE	FAT
+13.9	+12	+34	+120	+1.1	+78	+85	+1.03	-.033
\$M	\$W	\$F	\$G	\$B	\$C	\$T	\$D	\$E
+53	+89	+118	+71	+188	+297			

CED	BW	WW	YW	DMI	YH	SC	DOC	HP	CEM	MILK	MW	MH	CW	MB	REA	FAT	TEND
63	59	2	1	100	4	12	74	24	10	6	1	2	1	24	2	13	86

PROVEN FEMALES

Top 1% \$B	Top 1% MCW	Top 2% REA	Top 15% CEM
Top 1% \$C	Top 1% MH	Top 3% Fat	Top 15% HPreg
Top 1% \$F	Top 1% RADG	Top 4% \$G	Top 15% Marb
Top 1% \$W	Top 1% WW	Top 10% Milk	Top 15% YH
Top 1% CWT	Top 1% YW	Top 10% SC	

- Rita 7509 is a proven and productive female from the heart of the Crazy K fall calving unit and she blends the \$110,000 female sire, Discovery with a featured Rita in the Pollard Farms program, Rita 5316.
- Rita 7509 posts a WR 1@102. The dam of Lot 5 blends the breed registration leader, Tour of Duty with a direct daughter of the \$5 million producer, Rita 6108 by Complete. The dam of Lot 5 records a WR 2@110 and a YR 1@99 while carrying an ultrasound REA ratio 1@101. Rita 6120, a maternal sister to the dam of Lot 5 was the \$112,000 top-selling female of the record-setting 2017 Bases Loaded Sale selected by Riverbend Ranch.
- Due 11/15/20 to Woodland Centerfire.

6

Bridgeview Rita 1704

Birth Date: 9-12-2017

Cow *19063139

Tattoo: 1704

#*Basin Payweight 1682
TEX Playbook 5437
+*18414912 +*Rita 1C43 of 9M26 Complete

#*Basin Payweight 006S
21AR O Lass 7017
#*Summitcrest Complete 1P55
+*Rita 9M26 of Rita 5F56 Pred

*GAR Anticipation
Black Gold Rita 4118
+*18053694 +*GAR/DRMCTR Objective 9J60

#MCC Daybreak
+GAR 5050 New Design 0530
#*SS Objective T510 0T26
+DRMCTR 111 Rita 6108

CED	BW	WW	YW	RADG	DMI	YH	SC	DOC
+10	+1.1	+73	+119	+23	+96	+7	+1.34	+34
HP	CEM	MILK	MW	MH	CW	MARB	RE	FAT
+6.5	+15	+37	+51	+5	+50	+71	+85	+002
\$M	\$W	\$F	\$G	\$B	\$C	\$T	\$D	\$E
+71	+94	+87	+59	+146	+260			

CED	BW	WW	YW	DMI	YH	SC	DOC	HP	CEM	MILK	MW	MH	CW	MB	REA	FAT	TEND
13	13	11	37	69	15	13	1	83	12	2	35	18	27	43	14	51	99

PROVEN FEMALES

Top 1% \$W	Top 3% WW	Top 15% \$B	Top 15% CWT
Top 1% Doc	Top 5% REA	Top 15% \$G	Top 15% SC
Top 2% Milk	Top 10% \$C	Top 15% \$M	Top 25% MH
Top 3% CEM	Top 10% YW	Top 15% CED	Top 25% Marb

- Rita 1704 is a direct daughter of the foundation Rita in the Bridgeview Angus program, Rita 4118 sired by the featured phenotype sire in the Crazy K herd sire roster, Playbook 5437.
- The dam of Lot 6 is a direct daughter of the foundation Quaker Hill Farms Rita, Rita 9J60 by the multi-trait sire, Anticipation. The dam of Lot 6 records a WR 1@121 while showing ultrasound ratios IMF 1@121 and REA 1@107. Maternal sisters to the dam of Lot 6 include: Rita 527, the \$160,000 lead-off and top-selling donor of the 2019 Spruce Mountain Ranch Sale selected by Express Ranches; Rita 544, the selection of Express Ranches in the first Black Gold sale; Rita 665, the lead-off female of the 2018 Black Gold Sale selected by XL Angus Ranch; Rita 573, the selection of Deer Valley Farm in a past Black Gold sale; and a heifer pregnancy selling to Stevens Land and Cattle and turned into Rita 702, the \$42,000 valued half interest selection of Crazy K Ranch as the top-valued female of the 2017 Stevens Sale.

Ruby Family



HR Ruby 7099 / The \$100,000
co-top-selling donor of the 2020 Crazy
K Ranch Sale selected by High Roller
Angus and dam of Lot 7.



44 Ruby 4382 /
The \$65,000 featured Crazy K
Ranch Ruby and dam of Lot 8.

7

Crazy K Ruby Heifer Pregnancy

Due Date: 11-15-2020

#*Basin Payweight 1682
TEX Playbook 5437
+*18414912 +*Rita 1C43 of 9M26 Complete

+*EXAR Hi-Tech 4769B
HR Ruby 7099
+*18979597 +*44 Ruby 2357

#*Basin Payweight 006S
21AR O Lass 7017
#*Summitcrest Complete 1P55
+*Rita 9M26 of Rita 5F56 Pred

#*AAR Ten X 7008 SA
+*EXAR Rita U049
#*Connealy Capitalist 028
+*44 Ruby X110

	CED	BW	WW	YW	RADG	DMI	YH	SC	DOC			
S	+14	+0	+60	+104	+21	+93	+1	+97	+32			
D	+10	+2.2	+85	+156	+31	+1.82	+7	+55	+15			
	HP	CEM	MILK	MW	MH	CW	MARB	RE	FAT			
S	+10.5	+15	+35	+2	-2	+48	+52	+36	+032			
D	+12.4	+12	+17	+112	+7	+81	+63	+84	+003			
	S-\$M	S-\$W	S-\$F	S-\$G	S-\$B	S-\$C	D-\$M	D-\$W	D-\$F	D-\$G	M-\$B	D-\$C
	+92	+80	+96	+41	+137	+270	+49	+71	+130	+55	+185	+289

- Featuring a heifer pregnancy from the \$100,000 co-top-selling donor of the 2020 Crazy K Sale, Ruby 7099 sired by the low-birth and phenotype sire, Playbook 5437.
- Ruby 7099, the powerful dam of Lot 7 was selected by High Roller Angus and is an outstanding daughter of the \$500,000 record-selling 44 Farms donor and now-deceased former High Roller Angus donor, Ruby 2357 sired by the featured Edisto Pines Farm and Express Ranches sire, Hi-Tech 4769B.
- Ruby 7099 carries a WR 1@114 while her now-deceased dam shows ultrasound ratios IMF 55@100 and REA 55@100.
- Maternal siblings to the dam of Lot 7 include: Ruby 4399, the \$210,000 half interest selection of Double G Farms as the top-selling female in the breed during the 2015 Fall Sale season; Ruby 6601, the \$180,000 valued half interest selection of High Roller Angus in the 2016 Fall Sale at 44 Farms; Ruby 4387, the \$140,000 valued member of the Spruce Mountain Ranch and 44 Farms donor programs; Ruby 8051, the \$120,000 valued half interest selection of Vintage Angus Ranch as the top-selling female of the Gobbell Farms consignment in the 2019 Crazy K Sale; Ruby 4792, the \$120,000 valued half interest selection of Bornemann Angus in the 2016 Spring Sale at 44 Farms; Bragging Rights 4372, the \$100,000 featured calving-ease sire in the 44 Farms, Twelve Stones Ranch and Select Sires herd sire batteries; Ruby 4808, the \$31,000 third high-selling open heifer of the 2015 Spring Sale at 44 Farms that went on to be the \$105,000 valued half interest selection of Express Ranches in the first Edisto Pines Farm sale; and Ruby 6267, the \$80,000 half interest lead-off female of the 2018 Female Sale at 44 Farms selected by Blackstone Cattle Company.
- Gobbell Farms selected a maternal sister heifer pregnancy to Lot 7 as the \$22,500 third high-selling pregnancy of the 2020 Crazy K Sale.

8

Crazy K Ruby Heifer Pregnancy

Due Date: 11-15-2020

+*LD Capitalist 316
Musgrave 316 Exclusive
+*18130471 +*Musgrave Prim Lassie 163-386

#*VAR Discovery 2240
44 Ruby 4382
+*17896907 +*44 Ruby 2357

#*Connealy Capitalist 028
LD Dixie Erica 2053
#*Musgrave Foundation
#SCR Prim Lassie 80634

#*AAR Ten X 7008 SA
+*Deer Valley Rita 0308
#*Connealy Capitalist 028
+*44 Ruby X110

	CED	BW	WW	YW	RADG	DMI	YH	SC	DOC			
S	+5	+1.4	+79	+138	+28	+1.22	+7	+99	+22			
	+10	+3	+68	+125	+28	+1.56	+8	+1.68	+27			
	HP	CEM	MILK	MW	MH	CW	MARB	RE	FAT			
S	+12.2	+10	+23	+65	+7	+68	+82	+68	+053			
	+16.9	+12	+24	+80	+7	+55	+79	+1.07	-.040			
	S-SM	S-SW	S-SF	S-SG	S-SB	S-SC	D-SM	D-SW	D-SF	D-SG	M-SB	D-SC
	+80	+81	+122	+58	+180	+313	+76	+69	+96	+69	+165	+290

- Featuring a heifer pregnancy from the newest addition to the Ruby family in the Crazy K donor program, Ruby 4382 sired by the outcross phenotype sire, 316 Exclusive.
- Ruby 4382 joined the Crazy K program as the \$65,000 top-selling female of the 2019 XL Angus Ranch Sale and is a direct daughter of the \$500,000 now-deceased High Roller Angus donor who was selected as the record-selling 44 Farms female, Ruby 2357 sired by the proven 44 Farms and Vintage Angus sire, Discovery.
- Full siblings to the dam of Lot 8 include: Ruby 4399, the \$420,000 valued 44 Farms and Double G Farms donor who is one of the all-time high income producers in the 44 Farms program; Ruby 4387, the \$140,000 valued featured Ruby in the Spruce Mountain Ranch and 44 Farms joint embryo programs; and the \$100,000 calving-ease specialist in the 44 Farms, Twelve Stones Ranch and Select Sires rosters, Bragging Rights 4372.
- Maternal sisters to the proven donor dam of Lot 8 include: Ruby 6601, the \$180,000 valued half interest selection of High Roller Angus in the 2016 Fall Sale at 44 Farms; Ruby 6267, the \$160,000 valued lead-off half interest female of the 2018 44 Farms Female Sale selected by Blackstone Cattle Company; and Ruby 4792, the \$120,000 valued half interest selection of Bornemann Angus in the 2016 Spring Sale at 44 Farms.
- Maternal sisters to Lot 8 include: the \$27,500 baby heifer calf selected by Vintage Angus Ranch in the 2019 XL Angus Ranch Sale.



Crazy K Ruby 7365 /
Lot 9

9

Crazy K Ruby 7365

Birth Date: 12-11-2017

Cow *19005590


Tattoo: 7365

#*GAR-EGL Protege
Quaker Hill Firestorm 3PT1
+*17786050 +*QHF Blackcap 6E2 of 4V16 4355

#*Rito 112 of 2536 Rito 616
LB 6807 Isabel 339
Ideal 4355 of OT26 2440
*QHF Blackcap 4V16 of 1H8

*VAR Generation 2100
44 Ruby 5821
+*18339156 +*44 Ruby 3820

#*Connealy Consensus 7229
+*Sandpoint Blackbird 8809
#*Rito 9Q13 of Rita 5F56 GHM
B/R Ruby 1224

CED	BW	WW	YW	RADG	DMI	YH	SC	DOC										
+13	-.3	+57	+103	+24	+72	+1	+.05	+19										
HP	CEM	MILK	MW	MH	CW	MARB	RE	FAT										
+9.5	+11	+28	+26	-.3	+34	+1.12	+.80	+.007										
\$M	+71	\$W	+69	\$F	+76	\$G	+77	\$B	+153	\$C	+270							
	CED	BW	WW	YW	DMI	YH	SC	DOC	HP	CEM	MILK	MW	MH	CW	MB	REA	FAT	TEND
	2	3	59	49	45	93	85	35	64	52	59	76	94	59	14	17	55	60

PROVEN FEMALES

Top 2% \$G
Top 3% Marb
Top 5% \$C

Top 5% CED
Top 10% \$B
Top 10% \$W

Top 10% REA
Top 15% \$M
Top 15% BW

Top 25% CEM
Top 25% YW

- Ruby 7365 is a low-birth and proven daughter of the featured Thomas Angus Ranch and Quaker Hill Farm sire, Firestorm 3PT1 and stems from a direct daughter of the one-time breed RE leader in the 44 Farms donor program, Ruby 3820 by the \$250,000 Generation.
- Ruby 7365 records a WR 1@127. The first calf heifer dam of Lot 9 posts a BR 1@93 and a WR 1@99 and stems from the breed's top source of RE genetics, Ruby 1224.
- Due 9/19/20 to E&B Plus One.

10

Crazy K Ruby 7174

Birth Date: 8-15-2017

Cow +*18916985

Tattoo: 7174

#MCC Daybreak
Quaker Hill Rampage 0A36
+*16925771 +*QHF Blackcap 6E2 of 4V16 4355

#*Boyd New Day 8005
#MCC Miss Focus 134
Ideal 4355 of OT26 2440
*QHF Blackcap 4V16 of 1H8

#*VAR Discovery 2240
44 Ruby 5108
+*18063865 +*44 Ruby X829

#*AAR Ten X 7008 SA
+*Deer Valley Rita 0308
#*Werner War Party 2417
B/R Ruby 1224

CED	BW	WW	YW	YW	RADG	DMI	YH	SC	DOC									
+10	+2	+66	+124	+30	+1.13	+7	+1.30	+19										
HP	CEM	MILK	MW	MH	CW	MARB	RE	FAT										
+13.7	+17	+23	+117	+6	+56	+51	+1.00	-.040										
\$M +43		\$W +60		\$F +104		\$G +55		\$B +159		\$C +249								
CED	BW	WW	YW	YW	DMI	YH	SC	DOC	HP	CEM	MILK	MW	MH	CW	MB	REA	FAT	TEND
25	22	57	27	54	68	18	31	12	1	75	17	49	49	48	20	10	31	

PROVEN FEMALES

Top 1% CEM
Top 1% MCW
Top 2% Fat
Top 2% REA
Top 3% RADG

Top 4% YW
Top 5% \$F
Top 5% CWT
Top 10% \$B
Top 10% WW

Top 15% \$C
Top 15% CED
Top 15% HPreg
Top 15% MH
Top 15% SC

Top 20% \$G
Top 25% BW

- Ruby 7174 is a low-birth female sired by the multi-trait Quaker Hill Farm and Mapleton Farm sire, Rampage and was produced by the \$160,000 valued daughter of the cornerstone Crazy K Ruby, Ruby X829 by the \$110,000 Discovery, Ruby 5108.
- The dam of Lot 10 was selected as the top-selling female of the 2016 Spring Sale at 44 Farms selling half interest to Hardwood Farms and records a WR 1@111 and a YR 1@102 while showing an ultrasound REA ratio 9@105.
- Due 9/19/20 to Bubs Southern Charm AA31.



44 Ruby X829 / A granddaughter
of this longtime member of the Crazy K
Ranch donor program sells as Lot 10.



Crazy K Rita 6750 / Lot 11

11

Crazy K Rita 6750

Birth Date: 11-1-2016

Cow #*18609230

Tattoo: 6750

#*AAR Ten X 7008 SA

#*Mytty In Focus

VAR Ranger 3008

#AAR Lady Kelton 5551

+*17455083 +*Sandpoint Blackbird 8809

#*Connealy Onward

+Riverbend Blackbird 4301

#*B/R Ambush 28

#Rockn D Ambush 1531

GAR 28 Ambush N340

+B/R Ruby of Tiffany 8250

+*16923749 +GAR Predestined 2786

#*GAR Predestined

GAR Retail Product 2712

CED	BW	WW	YW	RADG	DMI	YH	SC	DOC
+4	+2.4	+74	+132	+30	+1.17	+9	+63	+23
HP	CEM	MILK	MW	MH	CW	MARB	RE	FAT
+12.1	+13	+20	+91	+8	+64	+77	+1.02	-.040
\$M	\$W	\$F	\$G	\$B	\$C	\$T	\$D	\$E
+53	+65	+117	+67	+184	+292			
CED	BW	WW	YW	DMI	YH	SC	DOC	HP
36	41	53	24	60	59	58	33	45
CEM	MILK	MW	MH	CW	MB	REA	FAT	TEND
4	93	35	46	37	42	15	6	93

PROVEN FEMALES

Top 1% \$B	Top 2% REA	Top 5% \$G	Top 20% \$W
Top 1% \$C	Top 2% WW	Top 5% MH	Top 20% Marb
Top 1% \$F	Top 2% YW	Top 10% CEM	
Top 2% CWT	Top 3% RADG	Top 15% Doc	
Top 2% Fat	Top 4% MCW	Top 15% YH	

RITA 6750 IS A BALANCED-GROWTH AND MARB. PROSPECT THAT IS A DAUGHTER OF THE POWERFUL AND PROVEN \$30,000 HILLHOUSE ANGUS AND MAPLECREST FARMS DONOR, AMBUSH N340 Sired BY THE HILLHOUSE AND RIMROCK PRODUCTIONS SIRE, RANGER 3008.

- The dam of Lot 11 records a BR 4@93, a WR 4@104 and a YR 4@99 while showing ultrasound ratios IMF 67@100 and REA 67@101.
- Maternal siblings to Lot 11 include: the \$160,000 Ingenuity 3132, the second-generation Hillhouse and Maplecrest Farms donor; Oracle, the now-deceased Marb. leader in the Daltons on the Sycamore herd sire battery; 7505, the \$23,000 selection of Crazy K Ranch and Gobbell Farms in the 2018 Hillhouse Angus Sale; Blackcap 4129, the \$17,000 selection of Big Timber Cattle Company as the second high-selling open heifer of the 2015 Maplecrest Farms Sale; the \$13,500 top-selling heifer pregnancy of that offering selected by Express Ranches; 6741, the \$11,000 selection of XL Angus Ranch in the 2018 Hillhouse Angus Sale; Blackcap 6061, the \$9,000 selection of Wilks Ranch as the second high-selling open heifer of the 2016 Maplecrest Sale; 6786 selected by Junek Ranch in the 2019 Hillhouse Sale; and Rita 6543 selected by McWherter Farms in the 2019 Fall Crazy K Sale.
- Has a 7/15/20 heifer calf, Lot 11A, sired by Bubs Southern Charm AA31, tattoo 0605.



GAR 28 Ambush N340 / The dam of Lot 11.



2 Bar Cash 3449 /
Lot 12



2 Bar Mile High 9360 /
A daughter of this longtime anchor
of the Crazy K Ranch donor
program sells as Lot 13.

12

2 Bar Cash 3449

Birth Date: 12-26-2012

Cow +*17464824

Tattoo: 3449

#*Rito Revenue 5M2 of 2536 Pre
2 Bar Cash 1723
+*16898985 *2 Bar 5050 New Design 9264

#*GAR Predestined
GAR Precision 2536
#*GAR New Design 5050
+*2 Bar Objective 7967

#*B/R Ambush 28
2 Bar 28 Ambush 1865
+*16961561 +*2 Bar Mile High 9360

#Rockn D Ambush 1531
+B/R Ruby of Tiffany 8250
#*Riverbend Mile High 3718
2 Bar Objective 863

CED	BW	WW	YW	RADG	DMI	YH	SC	DOC
+3	+2.7	+56	+108	+25	+1.31	+7	+72	+21
HP	CEM	MILK	MW	MH	CW	MARB	RE	FAT
+12.8	+13	+27	+93	+9	+45	+1.23	+78	-.020
\$M	\$W	\$F	\$G	\$B	\$C	\$D	\$E	\$F
+39	+49	+93	+84	+177	+269			

CED	BW	WW	YW	DMI	YH	SC	DOC	HP	CEM	MILK	MW	MH	CW	MARB	RE	FAT	TEND
92	88	65	24	69	52	45	57	26	20	67	22	16	54	6	26	11	4

PROVEN FEMALES

Top 1% \$G	Top 4% MH	Top 10% REA	Top 20% YW
Top 2% \$B	Top 5% \$C	Top 15% \$F	Top 25% HPreg
Top 2% Marb	Top 5% Fat	Top 20% CWT	Top 25% RADG
Top 3% MCW	Top 10% CEM	Top 20% Doc	

Owned with Gobbell Farms, Savannah, TN

Selling full interest

- Cash 3449 comes from the top of the Crazy K and Gobbell Farms donor programs and she blends the growth and Marb. sire, Cash 1723 with the foundation Fanny in the Silveira Brothers and 2 Bar programs, Ambush 1865.
- Cash 3449 records a BR 1@89 and a WR 1@108 while showing ultrasound ratios IMF 12@104 and REA 12@99. The dam of Lot 12 posts ultrasound ratios IMF 26@100 and REA 26@102. Cash 3502, a flush sister to Lot 12 was the \$150,000 valued half interest selection of 44 Farms through the 2015 Spruce Mountain Sale.
- Maternal sisters to Lot 12 include: Fanny 4079, the \$37,500 top-selling bred heifer of the first Black Gold Genetics Sale selected by Sydenstricker Genetics; Fanny 4356 and Fanny 4338, the high REA and \$B second-generation features of the Silveira Brothers programs; and three embryos selling for \$1,400 each through the 2014 Bases Loaded to Express Ranches.
- Maternal sisters to this proven and productive female include: Fanny 4556, the \$30,000 selection of Pelphrey Cattle Company through the 2016 Spruce Mountain Sale; Fanny 6303, the \$25,000 selection of Banner Elite Genetics in the 2017 Spruce Mountain Sale; Fanny 6708, the \$17,500 selection of Belle Point Ranch in the 2018 Spruce Mountain Sale; Fanny 7042, the \$13,000 selection of Silveira Brothers in the 2017 Spruce Mountain Sale; and \$12,000 heifer pregnancy featured in that same event selling to Cannon Ridge Ranch.
- Has a 7/7/20 bull calf, Lot 12A, sired by Jindra Acclaim, tattoo 0601.

13

Crazy K Fanny 5705 [OSF]

Birth Date: 9-8-2015

Cow +*18226771

Tattoo: 5705

#*AAR Ten X 7008 SA
VAR Ranger 3008
+*17455083 +*Sandpoint Blackbird 8809

#*Myty In Focus
#AAR Lady Kelton 5551
#*Connealy Onward
+Riverbend Blackbird 4301

#*Riverbend Mile High 3718
2 Bar Mile High 9360
+*16407217 2 Bar Objective 863

#Bon View New Design 1407
#*GAR Precision 1919
#*SS Objective T510 OT26
+JT Miss 723 Rito Plus 1884

CED	BW	WW	YW	RADG	DMI	YH	SC	DOC
+8	+6	+60	+111	+28	+1.06	+6	+1.04	+22
HP	CEM	MILK	MW	MH	CW	MARB	RE	FAT
+12.7	+8	+22	+87	+9	+43	+63	+90	-.027
\$M	\$W	\$F	\$G	\$B	\$C	\$D	\$E	\$F
+45	+55	+95	+58	+153	+244			

CED	BW	WW	YW	DMI	YH	SC	DOC	HP	CEM	MILK	MW	MH	CW	MARB	RE	FAT	TEND
23	24	71	46	54	73	39	23	34	75	80	38	37	53	49	23	17	12

PROVEN FEMALES

Top 4% MH	Top 10% \$B	Top 15% Doc	Top 25% CWT
Top 4% REA	Top 10% RADG	Top 15% YW	Top 25% HPreg
Top 5% Fat	Top 15% \$F	Top 20% \$C	
Top 5% MCW	Top 15% \$G	Top 20% WW	

- Fanny 5705 is a direct daughter of the former prolific Crazy K donor, Mile High 9360 sired by the featured Hillhouse and Rimrock sire, Ranger 3008.
- Mile High 9360, the dam of Lot 13 was selected by Culp Farms in the 2019 Crazy K Fall Sale and posts a WR 2@100 and a YR 1@100 while showing ultrasound ratios IMF 108@102 and REA 107@101.
- Maternal sisters to Lot 13 include: Fanny 5023, the \$100,000 valued half interest selection of 21 Cattle Company in the 2016 Crazy K Sale; 2605, the \$70,000 valued half interest selection of Express Ranches as the top-selling female of the 2013 Hillhouse Angus Sale; Mile High 8G17, the \$42,500 selection of Edisto Pines Farm in the 2020 Crazy K Sale as the fourth high-selling bred heifer; Ambush 1865, the feature of the Silveira Brothers and 2 Bar joint embryo programs; 2604, the high RE female selected by Edisto Pines Farm in the 2016 Spruce Mountain Sale for \$40,000; 3545, the \$36,000 valued half interest selection of Spruce Mountain Ranch; 2625, the \$30,000 second high valued open heifer of the 2013 Hillhouse Sale selling half interest to 44 Farms; a heifer pregnancy selling in the 2016 Crazy K Sale to Vintage Angus Ranch for \$28,000; 2703, the \$28,000 valued half interest selection of Gabriel Ranches; Fanny 7229, the \$27,500 selection of Express Ranches in the 2018 Crazy K Sale; Fanny 6490, the \$25,000 selection of Kraus Angus and Long Lane Farms in that same offering; a heifer pregnancy selling to EZ Angus Ranch in the 2016 Crazy K Sale for \$25,000; and Fanny 8057 and Fanny 828F selected by Sydenstricker Genetics in the 2019 Crazy K Sale.
- Has a 7/12/20 bull calf, Lot 13A, sired by VAR Heritage 5038, tattoo 0602.

Objective 1885 Daughters



Crazy K Rita 9131 /
Lot 14A



Crazy K Rita 9130 /
Lot 14B

14A

Crazy K Rita 9131

Birth Date: 7-20-2019

Cow +*19480347

Tattoo: 9131

#*Plattemere Weigh Up K360
EWA High Weigh 3123
+*17816333 Edgewood Jaunty 128

#*SS Objective T510 OT26
GAR Objective 1885
+*15129456 GAR 1407 New Design 2232

#Sitz Upward 307R
#Barbara of Plattemere 337
#*GAR New Design 5050
Edgewood Jaunty 935

#SS Traveler 6807 T510
SS Miss Rita R011 7R8
#Bon View New Design 1407
+GAR Precision 2610

CED	BW	WW	YW	RADG	DMI	YH	SC	DOC
+9	+3	+67	+127	+27	+1.98	+1.0	+52	+20
HP	CEM	MILK	MW	MH	CW	MARB	RE	FAT
+12.4	+8	+24	+73	+9	+57	+1.13	+60	-.005
\$M	\$W	\$F	\$G	\$B	\$C	\$T	\$D	\$E
+52	+67	+97	+75	+172	+275			

CED	BW	WW	YW	DMI	YH	SC	DOC	HP	CEM	MILK	MW	MH	CW	MB	REA	FAT	TEND
34	27	48	22	94	31	41	52	42	82	75	42	28	19	11	42	35	29

NON-PARENT FEMALES

Top 4% \$B	Top 10% Marb	Top 15% CWT	Top 25% RADG
Top 4% \$G	Top 10% YH	Top 15% WW	
Top 10% \$C	Top 10% YW	Top 20% \$W	
Top 10% MH	Top 15% \$F	Top 25% Fat	

14B

Crazy K Rita 9130

Birth Date: 7-20-2019

Cow +*19481002

Tattoo: 9130

+*Quaker Hill Rampage 0A36
VAR Rubicon 5414
+*18212186 +*Sandpoint Blackbird 8809

#*SS Objective T510 OT26
GAR Objective 1885
+*15129456 GAR 1407 New Design 2232

#MCC Daybreak
+*QHF Blackcap 6E2 of4V16 4355
#*Connealy Onward
+Riverbend Blackbird 4301

#SS Traveler 6807 T510
SS Miss Rita R011 7R8
#Bon View New Design 1407
+GAR Precision 2610

CED	BW	WW	YW	RADG	DMI	YH	SC	DOC
+15	-.2	+67	+120	+26	+1.32	+8	-.06	+16
HP	CEM	MILK	MW	MH	CW	MARB	RE	FAT
+14.1	+15	+31	+88	+6	+48	+73	+73	-.042
\$M	\$W	\$F	\$G	\$B	\$C	\$T	\$D	\$E
+57	+76	+84	+62	+145	+245			

CED	BW	WW	YW	DMI	YH	SC	DOC	HP	CEM	MILK	MW	MH	CW	MB	REA	FAT	TEND
11	40	52	28	72	47	91	63	16	31	35	36	46	62	42	46	7	66

NON-PARENT FEMALES

Top 2% CED	Top 10% Milk	Top 15% YW	Top 25% \$C
Top 3% CEM	Top 15% \$G	Top 20% BW	Top 25% MH
Top 3% Fat	Top 15% MCW	Top 20% HPreg	Top 25% REA
Top 10% \$W	Top 15% WW	Top 25% \$B	Top 25% YH

- Featuring two daughters of the cornerstone calving-ease and Marb. headliner of the Crazy K donor program, Objective 1885 sired by the growth, Marb. and \$C sire in the Edgewood Angus and Select Sires roster, High Weigh 3123 and the Double Creek Farms sire, Rubicon 5414.
- Objective 1885, the \$360,000 valued now-deceased donor dam of Lots 14A and 14B posts a WR 2@102 while showing an ultrasound IMF ratio 160@102.
- Progeny from the donor dam of these summer yearling prospects include: Prophet, the proven growth and Marb. sire; Quannah 687L, the rare and valuable Marb. sire; Predestined N1039, the \$40,000 second high-selling bred cow of the 2014 Gardiner Angus Sale selling to Black Gold Genetics now in the Circle G Ranches program; Bextor 558, the \$70,000 valued half interest selection of Lisonbee Angus in the 2014 Boyd Beef Sale; and two pregnancies headlining the 2014 BoBo Angus Sale selling for \$30,000 each to Spruce

- Mountain Ranch and XL Angus Ranch as the co-top-selling pregnancies of that offering.
- Other progeny maternal sisters to Lots 14A and 14B include: Rita 3701, the \$60,000 top-selling bred heifer of the 2015 Spruce Mountain Sale selected by Stallion Angus Ranch; a \$50,000 heifer pregnancy selected by Riverbend Ranch in the 2017 National Finals Sale; Rita 5054, the \$25,000 selection of Express Ranches in the 2015 Crazy K Ranch Sale; Rita 7309, the \$25,000 selection of High Roller Angus in the 2018 Crazy K Sale; a heifer pregnancy selling to Deer Valley Farm for \$22,000 in that same offering; a baby heifer selling to Express Ranches for \$21,000 in the BoBo dispersal; a heifer pregnancy selling to XL Angus Ranch in the 2016 Crazy K Sale for \$18,000; and Rita 5503, the \$15,000 selection of XL Angus Ranch in the 2015 Woodside Sale.

15

Crazy K Rita 7341

Birth Date: 11-24-2017

Cow #*19002239

Tattoo: 7341

#*Basin Payweight 1682
TEX Playbook 5437
+*18414912 +*Rita 1C43 of 9M26 Complete

#*Basin Payweight 006S
21AR O Lass 7017
#*Summitcrest Complete 1P55
+*Rita 9M26 of Rita 5F56 Pred

#*AAR Ten X 7008 SA
BoBo Rita 3700
+*17652278 +GAR Objective 1885

#*Mytty In Focus
#AAR Lady Kelton 5551
#*SS Objective T510 OT26
GAR 1407 New Design 2232

CED	BW	WW	YW	RADG	DMI	YH	SC	DOC									
+12	+1	+58	+104	+20	+1.29	+4	+71	+30									
HP	CEM	MILK	MW	MH	CW	MARB	RE	FAT									
+9.9	+10	+37	+15	+1	+41	+99	+30	+013									
\$M	+78	\$W	+80	\$F	+76	\$G	+64	\$B	+139	\$C	+258						
<div><div></div><div></div></div>																	
CED	BW	WW	YW	DMI	YH	SC	DOC	HP	CEM	MILK	MW	MH	CW	MB	REA	FAT	TEND
6	12	66	60	69	77	50	5	48	70	7	93	82	66	27	86	48	77

PROVEN FEMALES

Top 2% \$W Top 4% \$M Top 10% CED Top 25% \$B
Top 2% Doc Top 10% \$C Top 10% Marb Top 25% WW
Top 2% Milk Top 10% \$G Top 20% BW Top 25% YW



Crazy K Henrietta Pride 3144 / The \$40,000 dam of Lot 17 in the Double Creek Farm program.

17

DCF Henrietta Pride 8591

Birth Date: 2-8-2018

Cow #*19177264

Tattoo: 8591

#*AAR Ten X 7008 SA
EXAR Stud 4658B
+*17908266 +*BoBo Rita 1559

#*Mytty In Focus
#AAR Lady Kelton 5551
#*Summitcrest Complete 1P55
+DRMCTR 111 Rita 6108

#*Connealy Confidence 0100
Crazy K Henrietta Pride 3144
+*17532134 +Sitz Henrietta Pride 643T

Connealy Tobin
Becka Gala of Conanga 8281
#*Connealy Onward
Sitz Henrietta Pride 81M

CED	BW	WW	YW	RADG	DMI	YH	SC	DOC									
+14	+3	+56	+107	+29	+81	+3	+15	+18									
HP	CEM	MILK	MW	MH	CW	MARB	RE	FAT									
+8.9	+15	+23	+67	+0	+45	+83	+50	+012									
\$M	+44	\$W	+54	\$F	+94	\$G	+59	\$B	+153	\$C	+243						
CED	BW	WW	YW	DMI	YH	SC	DOC	HP	CEM	MILK	MW	MH	CW	MB	REA	FAT	TEND
9	39	37	16	71	48	75	38	73	18	62	13	51	17	23	43	29	90

PROVEN FEMALES

Top 3% CED Top 10% \$B Top 15% Marb Top 20% MCW
Top 3% CEM Top 15% \$F Top 20% \$C Top 20% YW
Top 5% RADG Top 15% \$G Top 20% CWT Top 25% BW

- Henrietta Pride 8591 is a direct daughter of the \$40,000 Henrietta Pride 3144 the feature of the 2017 Crazy K Sale selected by Double Creek Farms who blends the calving-ease specialist, Confidence with the \$390,000 valued Deer Valley Farm, Express Ranches and Pollard Farms donor, Henrietta Pride 643T sired by the low-birth and Marb. sire, Stud 4658B.
- Henrietta Pride 3144, the dam of Lot 17 posts an ultrasound REA ratio 7@102. Maternal sisters to the dam of Lot 17 include: Henrietta 3237, the \$260,000 valued lead-off female of the 2014 Deer Valley Sale selling half interest to Edisto Pines Farm; and Henrietta Pride 5152, the \$142,000 valued headliner of the 2014 Big Event selling half interest to Bornemann Angus
- Maternal sisters to Lot 17 include: Henrietta Pride 6018, the \$15,000 selection of Hillhouse Angus in the 2017 Crazy K Sale; Henrietta Pride 6387 selected in that same offering for \$15,000 by Hillhouse Angus; and Henrietta Pride 6035 selected in the 2018 Crazy K Sale by Fairway Angus.
- Has a 7/17/20 heifer calf, Lot 17A, sired by Basin Payweight Plus 6048, tattoo 0606.



16

WRCC Henrietta Pride 5111

Birth Date: 9-20-2017

Cow #*19002607

Tattoo: 5111

#MCC Daybreak
Quaker Hill Rampage OA36
+*16925771 +*QHF Blackcap 6E2 of 4V16 4355

#*Boyd New Day 8005
#MCC Miss Focus 134
Ideal 4355 of OT26 2440
*QHF Blackcap 4V16 of 1H8

#*Connealy Consensus 7229
EXAR Henrietta Pride 5162
+*17327907 +Sitz Henrietta Pride 643T

#*Connealy Consensus
Blue Lilly of Conanga 16
#*Connealy Onward
Sitz Henrietta Pride 81M

CED	BW	WW	YW	RADG	DMI	YH	SC	DOC									
+1	+5.1	+78	+132	+28	+1.16	+1.0	+1.66	+13									
HP	CEM	MILK	MW	MH	CW	MARB	RE	FAT									
+12.3	+4	+19	+65	+7	+59	+50	+1.31	-058									
\$M	+61	\$W	+64	\$F	+99	\$G	+60	\$B	+160	\$C	+269						
CED	BW	WW	YW	DMI	YH	SC	DOC	HP	CEM	MILK	MW	MH	CW	MB	REA	FAT	TEND
67	80	35	41	58	34	6	61	31	86	92	62	43	43	60	3	1	88

PROVEN FEMALES

Top 1% REA Top 4% SC Top 10% MH Top 20% \$W
Top 1% WW Top 5% \$B Top 10% RADG Top 20% MCW
Top 2% YW Top 5% \$C Top 15% \$G
Top 4% CWT Top 10% \$F Top 15% YH

- Henrietta Pride 5111 is a direct daughter of the anchor of the Henrietta Pride family in the Ward Ratliff program, Henrietta Pride 5162 sired by the proven multi-trait Quaker Hill Farm and Mapleton Farm sire, Rampage.
- Henrietta Pride 5162, the donor dam of Lot 16 is a direct daughter of the \$390,000 valued Deer Valley Farm, Express Ranches and Pollard Farms donor, Henrietta Pride 643T by the balanced-trait female sire, Consensus 7229.
- Full and maternal sisters to Lot 16 include: a heifer pregnancy was featured in the 2016 Bases Loaded Sale selling to Banner Elite Genetics for \$10,000 and she went on to be Henrietta Pride 1625, the \$12,000 selection of Ingram Angus as a headliner of the 2016 Banner Sale who is the breed's current Number 1 RE proven dam; Henrietta Pride 5104 selling to Cliffside Farms in the 2018 Ward Ratliff Sale; Henrietta Pride 5102 selected in that same event by Express Ranches; Henrietta Pride 5103 selling to Lindstrom Angus; Henrietta Pride 5109 and Henrietta Pride 5110 both selected by Whitestone Farms in the 2019 Ward Ratliff Sale; and Henrietta Pride 5115 selling in that offering to Ingram Angus.
- Due 10/13/20 to Basin Payweight Plus 6048.

EXAR Henrietta Pride 5162 /

A daughter of this featured Ward Ratliff Cattle Company donor sells as Lot 16.

Evergreen Erica Family

18

Crazy K Evergreen Erica 7388

Birth Date: 12-23-2017

Cow #*19038794

Tattoo: 7388

#*GAR-EGL Protege
Quaker Hill Firestorm 3PT1
+*17786050 +*QHF Blackcap 6E2 of 4V16 4355

#*Rito 112 of 2536 Rito 616
LB 6807 Isabel 339
Ideal 4355 of 0T26 2440
*QHF Blackcap 4V16 of 1H8

#Poss Total Impact 745
BoBo Evergreen Erica 2529
+17347501 +Bridges Predestined 7023

#TC Total 410
Poss Blackcap 5116
#*GAR Predestined
Bridges Evergreen Erica 4139

CED	BW	WW	YW	RADG	DMI	YH	SC	DOC
-7	+4.0	+77	+136	+29	+1.37	+1.3	+65	+12
HP	CEM	MILK	MW	MH	CW	MARB	RE	FAT
+11.4	+5	+27	+108	+1.2	+60	+1.00	+78	-0.14
\$M	\$W	\$F	\$G	\$B	\$C	\$T	\$D	\$E
+41	+69	+103	+73	+175	+268			

CED	BW	WW	YW	DMI	YH	SC	DOC	HP	CEM	MILK	MW	MH	CW	MB	REA	FAT	TEND
98	78	17	25	76	13	60	62	54	59	68	16	10	26	17	45	41	56

PROVEN FEMALES

Top 1% MCW	Top 2% WW	Top 5% \$C	Top 10% \$W
Top 1% MH	Top 2% YW	Top 5% \$F	Top 10% Fat
Top 1% YH	Top 3% \$G	Top 5% Marb	Top 10% REA
Top 2% \$B	Top 3% CWT	Top 5% RADG	

- Evergreen Erica 7388 is a balanced-trait and Marb. daughter of the former foundation Evergreen Erica in the Crazy K and Gobbell Farms programs, Evergreen Erica 2529 and is sired by the Thomas Angus Ranch and Quaker Hill Farm sire, Firestorm 3PT1.
- The dam of Lot 18 posts a WR 2@100 while showing an ultrasound IMF ratio 14@103. Maternal sisters to the dam of Lot 18 include: Evergreen Erica 2615, the \$150,000 44 Farms and Innovative Genetics donor; Evergreen Erica 2514, the \$100,000 selection of Deer Valley Farm in a BoBo sale; Evergreen Erica 2513, the \$90,000 selection of Innovative Genetics in another BoBo Sale; and Evergreen Erica 2540, the \$65,000 selection of Vintage Angus Ranch from a BoBo Sale.
- Maternal sisters to Lot 18 include: Evergreen Erica 6028 selling to Pollard Farms in the 2017 Crazy K Sale; Evergreen Erica 5117, was selected by Jac's Ranch in the 2016 Crazy K Sale for \$9,000 where a maternal sister, Evergreen Erica 5252 sold to Jac's Ranch for \$8,500; Evergreen Erica 4521 selling to Spruce Mountain Ranch in the BoBo dispersal; Evergreen Erica 4068 selling in that same offering to Arrowhead Farms; and Evergreen Erica 8182 selected by Fulper Farms in the 2020 Crazy K Sale.
- Has a 7/29/20 bull calf, Lot 18A, sired by VAR Heritage 5038, tattoo 0614.



BoBo Evergreen Erica 2529 / A daughter sells as Lot 18.

19

Crazy K Evergreen Erica 7077

Birth Date: 2-21-2017

Cow #*18726137

Tattoo: 7077

#MCC Daybreak
Quaker Hill Rampage 0A36
+*16925771 +*QHF Blackcap 6E2 of 4V16 4355

#*Boyd New Day 8005
#MCC Miss Focus 134
Ideal 4355 of 0T26 2440
*QHF Blackcap 4V16 of 1H8

#Poss Total Impact 745
BoBo Evergreen Erica 2534
+17347502 +Bridges Predestined 7023

#TC Total 410
Poss Blackcap 5116
#*GAR Predestined
Bridges Evergreen Erica 4139

CED	BW	WW	YW	RADG	DMI	YH	SC	DOC
+4	+1.7	+81	+123	+21	+1.15	+9	+80	+12
HP	CEM	MILK	MW	MH	CW	MARB	RE	FAT
+11.9	+8	+16	+92	+7	+60	+70	+1.03	-0.02
\$M	\$W	\$F	\$G	\$B	\$C	\$T	\$D	\$E
+51	+75	+95	+61	+156	+253			

CED	BW	WW	YW	DMI	YH	SC	DOC	HP	CEM	MILK	MW	MH	CW	MB	REA	FAT	TEND
82	74	11	57	65	38	38	74	43	74	96	29	33	20	39	8	24	43

PROVEN FEMALES

Top 1% WW	Top 5% \$W	Top 10% \$G	Top 25% Fat
Top 2% REA	Top 5% YW	Top 10% MH	Top 25% Marb
Top 3% CWT	Top 10% \$B	Top 15% \$F	
Top 4% MCW	Top 10% \$C	Top 15% YH	

- Evergreen Erica 7077 is a growth and RE prospect sired by the multi-trait leader, Rampage and she stems from a full sister to the dam of the female selling as Lot 18 who is featured in the Pleasant Valley Farms program, Evergreen Erica 2534.
- The dam of Lot 19 records a BR 1@95, a WR 1@101 and a YR 1@105 while carrying ultrasound ratios IMF 2@100 and REA 2@100.
- Has a 7/29/20 bull calf, Lot 19A, sired by SS Enforcer E812, tattoo 0613.



Lary Cotton
Ryan Cotton
Mike Gothard
Jerry Crenshaw
Zack Hileman

517-294-0777
706-206-8361
540-894-1055
703-244-4767
540-460-2776

Welcome Angus Friends,

Everyone is invited to attend the Crazy K Fall Opportunity Sale on September 12, 2020 at the ranch in Michie, Tennessee at noon, with guest consignors Optum Angus Farm, Seaman, Ohio and Gobbell Farms, Savannah, Tennessee. This special event on the 2020 Fall Angus Sale Calendar highlights select individuals from three of the breed's most progressive breeding programs. Hosts Sammy and Sherry Kiser and manager Charlie Adkins are extremely hard working, enthusiastic Angus breeders and are pleased to have Optum Angus and Gobbell Farms join in this fall female sale.

The dedication and commitment these programs have made to enhancing the quality, predictability and productivity of Angus cattle is certainly demonstrated in this fine offering. The females from Lot 1 through 67 will be excellent additions to herds nationwide as they exhibit individual eye appeal, possess popular pedigrees and are based on breed improving genomic profiles. Every breeder aspires to develop a program and breed cattle that will not only improve the Angus breed, but add value to the entire cattle industry. We can attest that these programs are offering individuals that will work for you!

We will be at the sale site days ahead of the sale and look forward to visiting with you regarding the offering. If we can be of service in any way, please give us a call.

[Signature]

Ryan Cotton

Mike Gothard

Jerry Crenshaw

C. Zack Hileman



BAAR USA Lady Jaye 489 /
The \$89,000 dam of Lots 20 and 21.



Werner War Party 2417 /
Maternal sisters to this featured 44 Farms
and Select Sires roster member sell as
Lots 20 and 21.

20

Crazy K Lady Jaye 7191

Birth Date: 8-25-2017

Cow +*18887064

Tattoo: 7191

*VAR Generation 2100
VAR Heritage 5038
+*18066052 +*SJH Complete of 6108 1564

#BAR Ext Traveler 205
BAAR USA Lady Jaye 489
+14901682 Cra Lady Jaye 608 498 S Easy

#*Connealy Consensus 7229
+*Sandpoint Blackbird 8809
#*Summitcrest Complete 1P55
+DRMCTR 111 Rita 6108

#*N Bar Emulation EXT
#BAR Queen Traveler 3015
#*GAR Sleep Easy 1009
HHF 917 Lady 975 498

CED	BW	WW	YW	RADG	DMI	YH	SC	DOC
+7	+2.0	+63	+115	+24	+1.06	+1.0	+24	+24
HP	CEM	MILK	MW	MH	CW	MARB	RE	FAT
+14.4	+13	+33	+50	+6	+52	+81	+62	+041
\$M	\$W	\$F	\$G	\$B	\$C	\$D	\$E	\$F
+73	+73	+92	+57	+150	+268			
CED	BW	WW	YW	DMI	YH	SC	DOC	HP
47	50	53	35	64	29	73	43	17
CEM	MILK	MW	MH	CW	MARB	RE	FAT	TEND
17	29	73	50	52	18	69	93	31

PROVEN FEMALES

Top 5% \$C	Top 10% Doc	Top 15% \$G	Top 20% \$F
Top 10% \$M	Top 10% HPreg	Top 15% MH	Top 25% REA
Top 10% \$W	Top 10% Milk	Top 15% Marb	
Top 10% CEM	Top 10% YW	Top 15% WW	
Top 10% CWT	Top 15% \$B	Top 15% YH	

21

Crazy K Lady Jaye 7304

Birth Date: 11-10-2017

Cow +*19005618

Tattoo: 7304

#*GAR-EGL Protege
Quaker Hill Firestorm 3PT1
+*17786050 +*QHF Blackcap 6E2 of 4V16 4355

#BAR Ext Traveler 205
BAAR USA Lady Jaye 489
+14901682 Cra Lady Jaye 608 498 S Easy

#*Rito 112 of 2536 Rito 616
LB 6807 Isabel 339
Ideal 4355 of 0T26 2440
*QHF Blackcap 4V16 of 1H8

#*N Bar Emulation EXT
#BAR Queen Traveler 3015
#*GAR Sleep Easy 1009
HHF 917 Lady 975 498

CED	BW	WW	YW	RADG	DMI	YH	SC	DOC
+6	+0	+56	+97	+20	+75	+2	+13	+15
HP	CEM	MILK	MW	MH	CW	MARB	RE	FAT
+14.6	+10	+29	+35	-1	+33	+1.19	+67	+040
\$M	\$W	\$F	\$G	\$B	\$C	\$D	\$E	\$F
+66	+68	+69	+75	+145	+254			
CED	BW	WW	YW	DMI	YH	SC	DOC	HP
23	4	61	66	50	84	64	66	17
CEM	MILK	MW	MH	CW	MARB	RE	FAT	TEND
68	42	77	92	80	3	67	98	70

PROVEN FEMALES

Top 2% \$G	Top 10% HPreg	Top 20% BW	Top 25% Milk
Top 2% Marb	Top 15% \$B	Top 20% REA	
Top 10% \$C	Top 15% \$W	Top 25% \$M	

- Has a 7/20/20 heifer calf, Lot 21A, sired by VAR Heritage 5038, tattoo 0608.

- Featuring two proven daughters of the \$89,000 former prolific matriarch of the Crazy K program, Lady Jaye 489 sired by the Crazy K and EZ Angus sire, Heritage 5038 and the Thomas Angus Ranch and Quaker Hill Farm sire, Firestorm 3PT1.
- Lady Jaye 489, the dam of Lots 20 and 21 joined the Crazy K Ranch program as the lead-off and top-selling donor of a past sale at 44 Farms and this full sister to the longtime Select Sires roster member Bextor is one of the great herd sire producers to ever work in the Crazy K embryo program. The dam of Lots 20 and 21 records a BR 3@95, a WR 3@103 and a YR 2@101 while carrying ultrasound ratios IMF 77@101 and REA 77@100.
- Maternal siblings to this featured Lady Jaye include: War Party 2417, the \$75,000 feature of the 44 Farms, Werner Angus and Select Sires herd sire batteries; Lady Jaye 5072 selected by Long Lane Farm in the 2016 Crazy K Sale. Lady Jaye 129, the \$28,500 donor now in the Blackstone Cattle Company program; Lady Jaye 2203, the \$26,000 selection of Woodside Farms through the

- first Crazy K Ranch Sale; Lady Jaye 2205 selected in that offering by 44 Farms for \$14,000; and Lady Jaye X881, the cornerstone Lady Jaye in the Daltons on the Sycamore program; Revenue Sharing 1289, the \$21,000 top-selling bull of the 2012 44 Farms Bull Sale selling to Rolling Hills Farm; and Lady Jaye 0220, the selection of Werner Angus in the 2011 Sale at 44 Farms.
- Other maternal sisters to Lots 20 and 21 include: a \$15,500 heifer pregnancy selected by Teixeira Cattle Company in the 2015 Bases Loaded Sale; Lady Jaye 3424, the \$14,000 selection of Cannon Ridge Ranch in the 2015 Crazy K Sale; Lady Jaye 3364, the \$10,000 selection of Jac's Ranch in that same offering; Lady Jaye 5153, the \$10,000 selection of Pelphrey Cattle Company in the 2016 Crazy K Sale; a heifer pregnancy selling to Sydenstricker Genetics for \$9,000 in the 2015 Bases Loaded Sale; Lady Jaye 5047 selling in the 2016 Crazy K Sale to Double Creek Farms; and Lady Jaye 5085 selected in that same offering by Cannon Ridge Ranch.

1010 Daughters



SJH FD 4268 of 747
1010 / The \$280,000 valued
dam of Lots 22 and 23.

22

Crazy K Rita 8009

Birth Date: 1-11-2018

Cow +*19040144

Tattoo: 8009

+*KCF Bennett Consent Y75
KCF Bennett Citation
*18476755 *Thomas Patricia 9705

#*Connealy Consensus
+KCF Miss Protege W148
#*SS Objective T510 OT26
+Thomas Patricia 71138

*B/R Future Direction 4268
SJH FD 4268 of 747 1010
*16855715 DRMCTR/SH Objective 747

#CA Future Direction 5321
B/R Ruby 9114
#*SS Objective T510 OT26
+Britt Evergreen 565

CED	BW	WW	YW	RADG	DMI	YH	SC	DOC
+12	-.1	+60	+100	+19	+1.02	+.3	+.87	+5
HP	CEM	MILK	MW	MH	CW	MARB	RE	FAT
+9.3	+12	+28	+37	+.1	+44	+1.34	+.82	+.013
\$M	\$W	\$F	\$G	\$B	\$C	\$T	\$D	\$E
+58	+72	+82	+87	+169	+277			

CED	BW	WW	YW	DMI	YH	SC	DOC	HP	CEM	MILK	MW	MH	CW	MB	REA	FAT	TEND
38	45	65	74	43	94	29	96	70	52	45	71	84	59	3	27	41	100

PROVEN FEMALES

Top 1% \$G Top 3% \$C Top 10% REA Top 20% WW
Top 1% Marb Top 10% \$W Top 15% CEM Top 25% CWT
Top 3% \$B Top 10% CED Top 20% BW

23

Wilks Evergreen 6191

Birth Date: 2-26-2016

Cow +*18457662

Tattoo: 6191

#*EXAR Upshot 0562B
EXAR Denver 2002B
#*17160560 +Exar Royal Lass 1067

#Sitz Upward 307R
#*EXAR Barbara T020
#EXAR 263C
BR Royal Lass 19-132

*B/R Future Direction 4268
SJH FD 4268 of 747 1010
*16855715 DRMCTR/SH Objective 747

#CA Future Direction 5321
B/R Ruby 9114
#*SS Objective T510 OT26
+Britt Evergreen 565

CED	BW	WW	YW	RADG	DMI	YH	SC	DOC
+11	+1.3	+49	+90	+23	+.62	+.9	+.72	+4
HP	CEM	MILK	MW	MH	CW	MARB	RE	FAT
+13.9	+15	+21	+39	+.5	+39	+1.11	+.47	+.005
\$M	\$W	\$F	\$G	\$B	\$C	\$T	\$D	\$E
+59	+45	+85	+72	+157	+263			

CED	BW	WW	YW	DMI	YH	SC	DOC	HP	CEM	MILK	MW	MH	CW	MB	REA	FAT	TEND
43	68	92	74	18	67	67	95	17	7	94	83	74	85	4	80	40	93

PROVEN FEMALES

Top 3% \$G Top 10% \$B Top 15% HPreg
Top 3% CEM Top 10% \$C Top 15% YH
Top 3% Marb Top 10% CED Top 25% MH

- Evergreen 6191 is a full sister to the foundation Friendship Farms female, Rita 4D15 and records a WR 2@106.
- Has a 7/17/20 bull calf, Lot 23A, sired by VAR Heritage 5038, tattoo 0607.

- Featuring two daughters of the \$280,000 valued now-deceased and former headliner of the Crazy K and High Roller Angus joint embryo programs, 1010 sired by the record-selling 44 Farms and Knoll Crest Farms sire, Citation and the record-selling Express Ranches sire, Denver.
- The dam of Lots 22 and 23 joined the Crazy K program as the second high-selling open donor of the record-setting first High Roller sale and records a WR 3@99 and a YR 2@100 while showing ultrasound ratios IMF 130@106 and REA 130@100. Full and maternal sisters to Lots 22 and 23 include: the \$65,000 top-selling heifer pregnancy of the first High Roller sale selling to Venado

Creek Angus; Evergreen 5036, the \$60,000 top-selling open heifer of the 2016 Springfield Angus Sale; a \$45,000 heifer pregnancy selected by Vista Farms as the second high-selling pregnancy of the first High Roller Sale; Evergreen 5020, the \$33,000 second high-selling open heifer of the 2016 Springfield Sale selling to Four Sons Farm; Evergreen 7246 in the Blue Lake Cattle program; Rita 5V51 in the Baylee View Angus herd; Rita 4D15 in the Friendship Farms program; Evergreen 7264, the \$14,000 selection of Spruce Mountain Ranch in the 2019 Crazy K Sale; and the \$11,000 Wackler Farms selection in the 2018 Crazy K Sale, Evergreen 7166.



FF Rita 5V51 of 1010
2240 / A maternal sister to
Lots 22 and 23 in the Baylee
View Angus program.



Crazy K Blackbird 9132 /
Lot 24



Dean's Queenie X108 / The \$37,500 maternal sister to Lot 25
featured in the Optum Angus program.

24

Crazy K Blackbird 9132

Birth Date: 7-20-2019

Cow *19480992

Tattoo: 9132

*SydGen Exceed 3223
SydGen Enhance
18170041 SydGen Rita 2618

+*SydGen Googol
+*SydGen Forever Lady 1255
#*SydGen Liberty GA 8627
#Fox Run Rita 9308

#*Basin Payweight 1682
Crazy K Blackbird 7095
+*18913774 +*VAR Blackbird 3291

#*Basin Payweight 006S
21AR O Lass 7017
#*GAR Ingenuity
+*Sandpoint Blackbird 8809

CED	BW	WW	YW	RADG	DMI	YH	SC	DOC									
+7	+1.5	+74	+129	+29	+1.04	+6	+88	+28									
HP	CEM	MILK	MW	MH	CW	MARB	RE	FAT									
+6.2	+8	+25	+40	+4	+53	+1.29	+60	+037									
\$M	+71	\$W	+81	\$F	+95	\$G	+79	\$B	+175	\$C	+298						
CED	BW	WW	YW	DMI	YH	SC	DOC	HP	CEM	MILK	MW	MH	CW	MB	RE	FAT	TEND
9	11	7	17	85	30	35	19	87	41	54	44	28	15	2	25	88	34

NON-PARENT FEMALES

Top 2% \$C	Top 3% Marb	Top 10% WW	Top 15% RADG
Top 3% \$B	Top 4% \$W	Top 10% YW	Top 20% \$M
Top 3% \$G	Top 10% Doc	Top 15% \$F	Top 20% CWT

Owned with Gobbell Farms, Savannah, TN

- Blackbird 9132 is an outstanding Marb. and \$C prospect sired by the featured Sydenstricker Genetics and Mogck Angus sire, Enhance and stems from a first calf heifer who combines the foundation female sire, Payweight 1682 with the former Crazy K and Spruce Mountain Ranch donor, Blackbird 3291.
- Blackbird 9132 records a weaning ratio of 104. Blackbird 7095, the dam of Lot 24 was the \$100,000 lead-off female of the 2018 Crazy K Ranch Sale selected by Gobbell Farms as the co-top-selling open heifer of that offering. The grandam of Lot 24 is a full sister to the \$100,000 44 Farms and Vintage Angus Ranch sire, Index and was the \$40,000 selection of Jac's Ranch and Express Ranches as the featured aged donor of the 2019 Crazy K Sale.
- Maternal sisters to the dam of Lot 24 include: Blackbird 6084, the \$70,000 selection of Pelphrey Cattle Company in the 2017 Spruce Mountain Ranch Sale; Blackbird 6085, the \$70,000 selection of Vintage Angus Ranch, the second high-selling open heifer of the 2016 Spruce Mountain Ranch Sale; a heifer pregnancy selected by XL Angus Ranch as the \$45,000 top-selling pregnancy of the 2016 Crazy K Ranch Sale; a heifer pregnancy selected by XL Angus Ranch through the 2015 Spruce Mountain Sale for \$40,000 as the top selling pregnancy; Blackbird 7145, the \$35,000 selection of Edisto Pines Farm in the 2018 Spruce Mountain Sale; Blackbird 7501, the \$30,000 selection of Lazy F Ranch in that offering; a heifer pregnancy selling to XL Angus Ranch as the \$30,000 top-selling pregnancy of the record-setting 2017 Crazy K Ranch Sale; Blackbird 8059, the \$30,000 selection of EZ Angus in the 2018 Crazy K Ranch Sale; Blackbird 7146 selling in the 2018 Spruce Mountain Sale to Express Ranches for \$25,000; and Blackbird 7098 selling to Double Creek Farms for \$12,500.

25

Crazy K Queenie 9208

Birth Date: 9-30-2019

Cow +*19545812


Tattoo: 9208

*KCF Bennett Southside
Mead Magnitude
*18543414 #*Mead Primrose N198

#Nichols Extra K205
#*KCF Miss 208 S11
#*Plattmire Weigh Up K360
#Mead Primrose K247

#*Basin Payweight 006S
XLAR Queenie 6192
+*18570217 +Roden RL Queenie 70527

#Vermilion Payweight J847
+Basin Lucy 3829
#*E&B 1680 Precision 1023
#*GAR Ext 916

CED	BW	WW	YW	RADG	DMI	YH	SC	DOC											
+10	+1.0	+83	+148	+25	+2.15	+9	+1.43	+28											
HP	CEM	MILK	MW	MH	CW	MARB	RE	FAT											
+11.1	+15	+28	+84	+9	+66	+94	+76	+0.026											
\$M	+68	\$W	+90	\$F	+103	\$G	+66	\$B	+170	\$C	+289								
	CED	BW	WW	YW	DMI	YH	SC	DOC	2	HP	CEM	MILK	MW	MH	CW	MARB	RE	FAT	TEND
	8	14	10	9	99	30	12	2	51	11	35	35	19	18	9	32	65	71	

NON-PARENT FEMALES

Top 1% \$W	Top 4% \$B	Top 10% MH	Top 20% MCW
Top 1% WW	Top 4% CWT	Top 15% Marb	Top 25% \$M
Top 1% YW	Top 10% \$F	Top 15% SC	Top 25% Milk
Top 3% \$C	Top 10% \$G	Top 15% YH	Top 25% REA
Top 3% CEM	Top 10% Doc	Top 20% CED	

- Queenie 9208 is a low-birth and growth prospect sired by the outcross sire, Magnitude and produced by the foundation Queenie in the Crazy K and XL Angus Ranch programs, Queenie 6192.
- The dam of Lot 25 joined the Crazy K program as the \$70,000 valued and top-valued open donor of the 2017 XL Sale and blends the proven female sire, Payweight 006S with the cornerstone of the Queenie family, Queenie 70527.
- Maternal sisters to the dam of Lot 25 include: Queenie X108, the former Crazy K and Gobbell Farms donor now in the Optum Angus herd; Queenie Y120, the \$600,000 valued half interest selection of High Roller Angus in the 2016 Cox Ranch Sale; Queenie X161, the high \$B proven dam at High Roller Angus; Queenie X098, at Bar W Angus Ranch; Queenie Y126, at Springfield Angus; and the \$40,000 heifer pregnancy selling to Spring Grove Ranch.

Performance Genetics



Crazy K Primrose 9146 /
Lot 26

26

Crazy K Primrose 9146

Birth Date: 8-1-2019

Cow *19505123


Tattoo: 9146

#*AAR Ten X 7008 SA
VAR Discovery 2240
#*17262835 +*Deer Valley Rita 0308

#*Mytty In Focus
#AAR Lady Kelton 5551
#Sitz Upward 307R
*GAR Objective 2345

+*KCF Bennett Fortress
Crazy K Primrose 7153
+18890935 +VAR Primerose 5038

#*Connealy Consensus
*Thomas Patricia 9705
#Summitcrest High Prime 0H29
+Roth Primrose 1247

CED	BW	WW	YW	RADG	DMI	YH	SC	DOC										
+7	+0	+69	+124	+29	+1.09	+4	+24	+10										
HP	CEM	MILK	MW	MH	CW	MARB	RE	FAT										
+8.5	+10	+31	+56	+3	+55	+34	+80	-.043										
SM	+57	\$W	+82	\$F	+96	\$G	+45	\$B	+141	\$C	+240							
	CED	BW	WW	YW	DMI	YH	SC	DOC	HP	CEM	MILK	MW	MH	CW	MB	REA	FAT	TEND
	46	34	45	22	61	83	93	77	74	43	38	60	68	44	87	46	8	37

NON-PARENT FEMALE

Top 2% Fat Top 10% YW Top 15% WW Top 25% BW
Top 3% \$W Top 15% \$F Top 20% CWT
Top 10% Milk Top 15% RADG Top 20% REA

- Primrose 9146 is a low-birth prospect sired by the \$110,000 foundation female sire in the 44 Farms and Vintage Angus Ranch programs, Discovery and was produced by a first calf heifer who combines the low-birth female sire, Fortress with the former foundation Crazy K Primrose, Primerose 5038.
- Primrose 9146 records a birth ratio of 97 and a weaning ratio of 100.

27

Crazy K Lady 9213

Birth Date: 10-2-2019

Cow *19545838

Tattoo: 9213

#*Basin Payweight 1682
VAR Power Play 7018
+*18717078 +*Sandpoint Blackbird 8809

#*Basin Payweight 006S
21AR O Lass 7017
#*Connealy Onward
+Riverbend Blackbird 4301

+*Quaker Hill Firestorm 3PT1
Double R Bar Lady D101
#18496598 +*RB Lady 7125-890-2170

#*GAR-EGL Protege
+*QHF Blackcap 6E2 of4V16 4355
#GAR Objective 7125
*RB Lady Standard 305-890

CED	BW	WW	YW	RADG	DMI	YH	SC	DOC									
+2	+3.3	+82	+136	+26	+1.19	+5	+83	+16									
HP	CEM	MILK	MW	MH	CW	MARB	RE	FAT									
+8.2	+11	+23	+87	+6	+64	+76	+45	+026									
SM	+49	\$W	+78	\$F	+107	\$G	+54	\$B	+161	\$C	+258						
CED	BW	WW	YW	DMI	YH	SC	DOC	HP	CEM	MILK	MW	MH	CW	MB	REA	FAT	TEND
89	95	14	27	56	57	53	49	86	13	86	28	40	18	34	83	72	93

NON-PARENT FEMALE

Top 2% WW Top 5% \$W Top 15% \$C Top 25% CEM
Top 4% \$F Top 10% \$B Top 15% MCW Top 25% MH
Top 4% YW Top 10% CWT Top 25% \$G

- Lady 9213 is a daughter of the former Crazy K and Black Gold Genetics donor, Lady D101 sired by the \$730,000 record-selling Rooney Angus Ranch and Vintage Angus sire, Power Play 7013.
- Lady D101, the dam of Lot 27 is a powerful and proven daughter of the ABS Global and Thomas Angus Ranch sire, Firestorm 3PT1 and she stems from the cornerstone of the Lady Standard family in the Quaker Hill Farm, Double R Bar Ranch and Spring Grove Ranch joint embryo programs, Lady 7125-890-2170.
- Lady D101 posts a BR 2@99 and a WR 2@101 and was selected by Z Cattle Company in the 2020 Crazy K Sale. Maternal sisters to Lot 27 include: Lady R824 selected by Black Gold Genetics in the 2020 Crazy K Sale; and Lady K973 selling to Martin Allison in that offering.



VAR Blackcap 1059 / A granddaughter of this EZ Angus Ranch cornerstone donor sells as Lot 28.

28

Crazy K Blackcap 9106

Birth Date: 7-10-2019

Cow *19480941


Tattoo: 9106

*Silveiras Conversion 8064
BUBS Southern Charm AA31
*17853196 *Hickory Hill Erica 009

#*BT Crossover 758N
+EXG Saras Dream S609 R3
#*Connealy Stimulus 8419
Hickory Hill Erica TA32

#*EXAR Denver 2002B
EXAR Blackcap 9364
+*17808921 +*VAR Blackcap 1059

#*EXAR Upshot 0562B
+Exar Royal Lass 1067
#*Summitcrest Complete 1P55
+*EXAR New Design 4212

CED	BW	WW	YW	RADG	DMI	YH	SC	DOC										
-4	+5.6	+76	+133	+30	+97	+8	+1.13	+14										
HP	CEM	MILK	MW	MH	CW	MARB	RE	FAT										
+8.6	+7	+31	+72	+4	+57	+35	+83	-.007										
SM	+56	\$W	+72	\$F	+102	\$G	+43	\$B	+145	\$C	+244							
	CED	BW	WW	YW	DMI	YH	SC	DOC	HP	CEM	MILK	MW	MH	CW	MB	REA	FAT	TEND
	86	87	45	40	40	60	26	46	78	24	32	60	78	38	60	36	66	98

NON-PARENT FEMALE

Top 4% WW Top 10% Milk Top 15% CWT Top 25% Fat
Top 5% YW Top 10% RADG Top 15% REA Top 25% YH
Top 10% \$F Top 15% \$W Top 25% \$B

- Blackcap 9106 is a direct daughter of the \$52,500 selection of JJ Angus in the 2020 Crazy K Sale, Blackcap 9364 and is a balanced-trait daughter of the now-deceased Southern Charm AA31.
- Blackcap 9364 the dam of Lot 28 posts a WR 2@104 and a YR 1@109 while carrying an ultrasound REA ratio 6@99. Maternal siblings to the dam of Lot 28 include: Gold Rush 6001, selected by ABS Global, Express Ranches, Basin Angus, Ford and Sons and Turner Meadow as the \$90,000 lead-off bull of the first EZ Angus Ranch bull sale; Blackcap 6012, the \$230,000 valued half interest selection of Spruce Mountain Ranch in the first EZ sale; Blackcap 3091, the \$175,000 top-selling bred heifer of the 2014 Big Event selected by Deer Valley Farm and Edisto Pines Farm; and Blackcap 6016, the \$40,000 selection of Crazy K Ranch and Teixeira Cattle Company as the third high-selling open heifer in the record-setting 2017 Bases Loaded Sale.
- Full sisters to Lot 28 include: Blackcap 9105, the \$47,500 selection of Vintage Angus Ranch in the 2020 Crazy K Sale; and Blackcap 9145 selling to Express Ranches in that offering for \$30,000. Blackcap 0053, a maternal sister to Lot 28 was the \$40,000 selection of Ingram Angus in that same event.

Balanced-Trait Females



**Quaker Hill Blackcap
0A32** / The \$340,000 valued
grandam of Lot 29.

29

Crazy K Blackcap 9185

Birth Date: 9-9-2019

Cow +*19545851

Tattoo: 9185

*Byergo Black Magic 3348
Byergo Titus 6340
*18818214 #Byergo Miss Elia 2834

+*Gaffney Game Changer 371
HR Blackcap 6597
+*18728576 +*Quaker Hill Blackcap 0A32

*Silveiras Conversion 8064
*Byergo Elia Cupcake 5900
Byergo Big Time 8728
Byergo Miss Elia 8756

*Connealy Confidence 0100
*RB Lady Standard 305-890
#MCC Daybreak
+*QHF Blackcap 6E2 of 4V16 4355

CED	BW	WW	YW	RADG	DMI	YH	SC	DOC
+9	+1.8	+88	+145	+28	+1.26	+7	+1.35	+16
HP	CEM	MILK	MW	MH	CW	MARB	RE	FAT
+6.1	+13	+31	+74	+4	+67	+42	+1.25	-.026
\$M	\$W	\$F	\$G	\$B	\$C	\$T	\$D	\$E
+70	+101	+108	+53	+161	+279			
62	85	12	30	50	77	16	26	97
41	29	47	66	24	78	1	7	100

NON-PARENT FEMALES

Top 1% \$W	Top 4% \$F	Top 10% \$B	Top 20% RADG
Top 1% REA	Top 4% CWT	Top 10% CEM	Top 20% SC
Top 1% WW	Top 5% SC	Top 10% Milk	Top 25% MCW
Top 2% YW	Top 5% Fat	Top 20% \$M	

30

Curtin Erica 8089

Birth Date: 1-30-2018

Cow *19137462

Tattoo: 8089

##*Basin Payweight 1682
TEX Playbook 5437
+*18414912 +*Rita 1C43 of 9M26 Complete

+*Schiefelbein Zeus 3609
Curtin Erica 4036
*18068729 #CL&C Erica 2004

##*Basin Payweight 006S
21AR O Lass 7017
##*Summitcrest Complete 1P55
+*Rita 9M26 of Rita 5F56 Pred

##*SAV Final Answer 0035
Frosty Elba Lizzy 1106
##*SAV Brilliance 8077
+Blue Ston Erica 0066

CED	BW	WW	YW	RADG	DMI	YH	SC	DOC
+11	+2	+66	+106	+17	+1.04	+2	+82	+27
HP	CEM	MILK	MW	MH	CW	MARB	RE	FAT
+14.8	+16	+34	+24	-.2	+60	+65	+74	+0.22
\$M	\$W	\$F	\$G	\$B	\$C	\$T	\$D	\$E
+96	+88	+100	+53	+153	+295			
5	4	20	57	86	60	33	7	5
7	13	67	82	15	46	46	90	58

PROVEN FEMALES

Top 1% \$C	Top 3% CWT	Top 10% CED	Top 15% REA
Top 1% \$M	Top 5% Doc	Top 10% HPreg	Top 20% \$G
Top 1% \$W	Top 10% \$B	Top 10% Milk	Top 20% YW
Top 1% CEM	Top 10% \$F	Top 10% WW	Top 25% BW

• Blackcap 9185 is a powerful growth and RE daughter of the \$60,000 selection of Crazy K in the 2018 High Roller Angus Sale, Blackcap 6597 sired by growth sire, Titus 6340.

• The dam of Lot 29 was selected second high-selling bred heifer of the 2018 High Roller Sale selling to Crazy K Ranch and is a direct daughter of the \$340,000 valued Spruce Mountain Ranch and High Roller Angus donor, Blackcap 0A32 sired by the \$295,000 Herbster Angus sire, Game Changer 371.

• Maternal siblings to the dam of Lot 29 include: Manning 4EX9, the \$67,000 top-selling bull of the spring 2015 Quaker Hill Sale selling to Kowpoke Cattle Company and is a featured member of the Select Sires roster; Blackcap 6503, the \$60,000 top-selling open heifer of the record-setting first High Roller sale selected by 44 Farms; Power Alley 6571, the \$55,000 top-selling bull of the 2018 Spring Sale at 44 Farms selling to ABS Global; Blackcap 9033, the \$35,000 selection of B&B Livestock in the 2019 Spruce Mountain Sale; Blackcap 6647, the \$22,000 selection of Dixie Valley Farms in that same offering; and Ballast, the \$13,000 sixth high-selling bull of the 2020 Riverbend Ranch Bull Sale selected by Goose Creek Farms.

• Erica 8089 is a low-birth, \$M and \$W bred heifer sired by the longtime featured phenotype sire in the Crazy K herd sire battery, Playbook 5437 and stems from a sensational producing dam who blends Zues 3609 and the female sire, Brilliance.

• Erica 8089 posts a birth ratio of 99 and a weaning ratio of 101. The dam of Lot 30 records a BR 4@98, a WR 4@104 and a YR 2@104 while carrying an ultrasound REA ratio 2@114.

• Due 9/12/20 to VAR Heritage 5038.



**Curtin Erica 8089 /
Lot 30**

Fall Calving Females



Vintage Blackcap 4021 / A
daughter of this \$45,000 Ward Ratliff
Cattle Company donor sells as Lot 32.

32 Crazy K Blackcap 7364

Birth Date: 12-11-2017 **Cow #** *19002244 **Tattoo:** 7364
*VAR Generation 2100
VAR Heritage 5038
+*18066052 +*SJH Complete of 6108 1564
#*Connealy Consensus 7229
+*Sandpoint Blackbird 8809
#*Summitcrest Complete 1P55
+*DRMCTR 111 Rita 6108
#*EXAR Upshot 0562B
Vintage Blackcap 4021
+*17762479 +*VAR Blackcap 9319
#Sitz Upward 307R
#EXAR Barbara T020
#*Connealy All Around
+*EXAR New Design 4212

CED	BW	WW	YW	RADG	DMI	YH	SC	DOC									
+6	+2.1	+66	+114	+22	+94	+8	+59	+24									
HP	CEM	MILK	MW	MH	CW	MARB	RE	FAT									
+10.2	+11	+21	+49	+6	+44	+1.03	+85	+0.18									
\$M	\$58	\$W	\$64	\$F	\$83	\$G	\$72	\$B	\$155	\$C	\$259						
CED	BW	WW	YW	DMI	YH	SC	DOC	HP	CEM	MILK	MW	MH	CW	MB	REA	FAT	TEND
49	53	51	47	50	70	68	40	69	34	93	77	64	78	6	42	80	50

PROVEN FEMALES

Top 3% \$G Top 10% \$C Top 15% YW Top 25% CWT
Top 5% Marb Top 10% Doc Top 20% \$W
Top 5% REA Top 10% WW Top 20% YH
Top 10% \$B Top 15% MH Top 25% CEM

- Blackcap 7364 is a balanced-trait daughter of the prolific \$45,000 top-selling donor of the 2017 Banner Elite Genetics Sale, Blackcap 4021 sired by the featured Crazy K and EZ Angus sire, Heritage 5038.
- Blackcap 4021, the donor dam of Lot 32 blends the Express Ranches and BoBo Angus sire, Upshot with the longtime feature of the Vintage Angus Ranch and Schnoor Sisters donor programs, Blackcap 9319, the dam of the \$90,000 Edisto Pines Farm and Vintage Angus sire, Best Buy 8577.
- Full and maternal sisters to Lot 32 include: Blackcap 7360, the \$52,500 selection of Express Ranches in the 2018 Crazy K Sale; Blackcap 7362, the \$50,000 female selected in that offering by Vintage Angus Ranch; Blackcap 7363, the \$50,000 selection of 44 Farms in the 2018 Crazy K Sale; Blackcap 7614, the \$22,500 selection of Deer Valley Farm in the 2019 Crazy K Sale; Blackcap 6012, the \$18,000 selection of Edisto Pines Farm; Blackcap 1745, the \$17,000 selection of High Roller Angus in the 2017 Banner Elite Genetics Sale; a \$11,000 heifer pregnancy selected by Pollard Farms; a \$7,500 heifer pregnancy selling to Spruce Mountain Ranch; eight embryos selling to Lylester Ranch for \$1,100 each; and Blackcap 9143, the selection of Sydenstricker Genetics in the 2020 Crazy K Sale.
- Due 11/12/20 to Bubs Southern Charm AA31.

31 EZAR Duchess 8248

Birth Date: 2-2-2018 **Cow #** *19119730 **Tattoo:** 8248
#*Connealy In Sure 8524
GAR Sure Fire
+*17328461 +*Chair Rock 5050 GAR 8086
#Basin Rainmaker P175
SydGen Duchess 1230
#16907527 SydGen Duchess 9314
#*Mytty In Focus
Entreena of Conanga 657
#*GAR New Design 5050
Chair Rock Grid Maker 2107
#Basin Rainmaker 747L
Basin Blackcap Lady 693L
SydGen Turbo 6684
SydGen Duchess 7105

CED	BW	WW	YW	RADG	DMI	YH	SC	DOC									
+9	+1.4	+66	+121	+25	+1.18	+6	+1.75	+27									
HP	CEM	MILK	MW	MH	CW	MARB	RE	FAT									
+9.9	+8	+32	+63	+4	+50	+9.1	+35	+0.68									
\$M	+62	\$W	+76	\$F	+89	\$G	+56	\$B	+146	\$C	+251						
CED	BW	WW	YW	DMI	YH	SC	DOC	HP	CEM	MILK	MW	MH	CW	MB	REA	FAT	TEND
12	25	51	46	55	69	9	14	68	64	22	58	63	40	20	75	96	37

PROVEN FEMALES

Top 3% SC Top 10% Milk Top 15% \$C Top 25% \$F
Top 4% \$W Top 10% WW Top 15% \$G Top 25% CED
Top 5% Doc Top 10% YW Top 15% CWT Top 25% RADG
Top 10% Marb Top 15% \$B Top 20% MCW

- Duchess 8248 is a daughter of the foundation EZ Angus Ranch Duchess, Duchess 1230 who was selected as a highlight of a past Sydenstricker Genetics sale sired by the popular multi-trait female sire, Sure Fire.
- The dam of Lot 31 posts a BR 7@98, a WR 7@105 and a YR 6@110. Duchess 6021, a maternal sister to Lot 31 was selected by Express Ranches in the 2019 EZ Angus Sale.
- Has a 7/25/20 bull calf, Lot 31A, sired by VAR Heritage 5038, tattoo 0611.



EZAR Duchess 6021 / A maternal sister to this Express Ranches selection in the 2019 EZ Angus Sale sells as Lot 31.

33 DCF Ruby of Tiffany 7813

Birth Date: 10-5-2017 **Cow #** *19132684 **Tattoo:** 7813
#*AAR Ten X 7008 SA
EXAR Stud 4658B
+*17908266 +*BoBo Rita 1559
#*Mytty In Focus
#AAR Lady Kelton 5551
#*Summitcrest Complete 1P55
+*DRMCTR 111 Rita 6108
#*EXAR Denver 2002B
DCF Ruby of Tiffany 4512
#Exar Royal Lass 1067
#B/R Destination 727-928
#B/R Ruby of Tiffany 9256

CED	BW	WW	YW	RADG	DMI	YH	SC	DOC
+5	+3.6	+68	+116	+24	+96	+6	+59	+20
HP	CEM	MILK	MW	MH	CW	MARB	RE	FAT
+13.6	+11	+23	+62	+6	+50	+1.32	+53	+0.29
\$M	\$W	\$F	\$G	\$B	\$C	\$T	\$D	\$E
+69	+63	+97	+81	+178	+300			

CED	BW	WW	YW	DMI	YH	SC	DOC	HP	CEM	MILK	MW	MH	CW	MB	REA	FAT	TEND
76	90	20	45	70	39	57	36	10	33	70	30	30	17	2	52	82	53

PROVEN FEMALES

Top 1% \$B Top 10% \$F Top 15% CWT Top 25% CEM
Top 1% \$C Top 10% WW Top 15% MH Top 25% Doc
Top 1% \$G Top 10% YW Top 20% \$W Top 25% MCW
Top 1% Marb Top 15% \$M Top 20% HPreg

- Ruby of Tiffany 7813 is a Marb. female sired by the low-birth and Marb. feature of the Express Ranches, Basin Angus and Sydenstricker Genetics rosters, Stud 4658B and stems from a dam who blends the record-selling Denver with a daughter of the 44 Farms female sire, Destination 727-928.
- Ruby of Tiffany 7813 records a WR 1@102. The dam of Lot 33 carries ultrasound ratios IMF 1@101 and REA 1@106.
- Due 11/20/20 to Tex Playbook 5437.



44 Lucy X825 / A granddaughter of this Double Creek Farms donor sells as Lot 34.



Murcielago Blackcap U115 / The dam of Lot 36.

34

DCF Lucy 7879

Birth Date: 11-7-2017

Cow +*19177260

Tattoo: 7879

#*AAR Ten X 7008 SA
EXAR Stud 4658B
+*17908266 +*BoBo Rita 1559

#*Mytty In Focus
#AAR Lady Kelton 5551
#*Summitcrest Complete 1P55
+DRMCTR 111 Rita 6108

#*Connealy Consensus 7229
KLR Lucy 3293
*17924129 +*44 Lucy X825

#*Connealy Consensus
Blue Lilly of Conanga 16
#Sitz Upward 307R
+Basin Lucy 3829

CED	BW	WW	YW	RADG	DMI	YH	SC	DOC									
+8	+2.6	+69	+124	+27	+1.21	+5	+93	+26									
HP	CEM	MILK	MW	MH	CW	MARB	RE	FAT									
+13.2	+12	+23	+69	+5	+50	+1.11	+57	+0.21									
\$M	+64	\$W	+65	\$F	+90	\$G	+72	\$B	+162	\$C	+274						
46	77	15	13	85	57	32	15	22	36	75	15	25	14	8	37	57	75

PROVEN FEMALES

Top 3% \$G	Top 5% \$B	Top 15% CEM	Top 20% \$W
Top 3% Marb	Top 5% WW	Top 15% CWT	Top 20% HPreg
Top 4% \$C	Top 10% Doc	Top 15% MCW	Top 25% MH
Top 4% YW	Top 10% RADG	Top 20% \$F	

- Lucy 7879 is a balanced-trait Marb. female sired by the low-birth and Marb. sire, Stud 4658B and stems from a direct daughter of the \$23,000 foundation Double Creek Farms Lucy, Lucy X825 sired by the foundation female sire, Consensus.
- Due 11/13/20 to Basin Payweight Plus 6048.

35

M/V Rita 7102

Birth Date: 8-31-2017

Cow *19084822

Tattoo: 7102

#*AAR Ten X 7008 SA
VAR Discovery 2240
#*17262835 +*Deer Valley Rita 0308

#*Mytty In Focus
#AAR Lady Kelton 5551
#Sitz Upward 307R
*GAR Objective 2345

+*VAR Index 3282
M/V Rita 5102
18254607 +Daltons Rita 0275

#*GAR Ingenuity
+*Sandpoint Blackbird 8809
#KCF Bennett Performer
+Baldridge Rita R138

CED	BW	WW	YW	RADG	DMI	YH	SC	DOC									
+10	+1.1	+78	+143	+30	+1.85	+9	+1.34	+24									
HP	CEM	MILK	MW	MH	CW	MARB	RE	FAT									
+10.8	+16	+27	+101	+7	+68	+6.5	+80	-.029									
\$M	+58	\$W	+80	\$F	+114	\$G	+58	\$B	+172	\$C	+281						
44	61	11	3	97	19	21	16	31	2	63	6	22	5	36	32	10	67

PROVEN FEMALES

Top 1% CEM	Top 2% \$C	Top 5% Fat	Top 15% CED
Top 1% CWT	Top 2% \$F	Top 10% Doc	Top 15% SC
Top 1% WW	Top 2% \$W	Top 10% MH	Top 15% YH
Top 1% YW	Top 2% MCW	Top 10% REA	
Top 2% \$B	Top 3% RADG	Top 15% \$G	

- Rita 7102 comes from the heart of the Crazy K fall calving program and this multi-trait female blends the foundation 44 Farms and Vintage Angus sires, Discovery and Index with the cornerstone McWherter Angus donor, Rita 0275.
- Rita 7102 posts a BR 1@97 and a WR 1@100 and descends from the prolific former Daltons on the Sycamore and Hudson Pines donor, Rita R138.
- Due 8/29/20 to Tex Playbook 5437.

36

EPF Blackcap 7711

Birth Date: 8-22-2017

Cow +*19045440

Tattoo: 7711

#*MCC Daybreak
Quaker Hill Rampage 0A36
+*16925771 +*QHF Blackcap 6E2 of 4V16 4355

#*Boyd New Day 8005
#MCC Miss Focus 134
Ideal 4355 of 0T26 2440
*QHF Blackcap 4V16 of 1H8

#*Gardens Prime Star
Murcielago Blackcap U115
+*16210884 +VT 1407 New Design Z38

#*N Bar Prime Time D806
Green Garden Jilt C242 S1
#Bon View New Design 1407
+GAR Plowman G240

CED	BW	WW	YW	RADG	DMI	YH	SC	DOC									
+12	+1.2	+69	+121	+28	+88	+9	+2.75	+12									
HP	CEM	MILK	MW	MH	CW	MARB	RE	FAT									
+11.1	+13	+19	+63	+4	+59	+94	+97	-0.04									
\$M	+62	\$W	+66	\$F	+107	\$G	+72	\$B	+179	\$C	+294						
CED	BW	WW	YW	DMI	YH	SC	DOC	HP	CEM	MILK	MW	MH	CW	MR	REA	FAT	TEND
40	65	22	25	52	16	1	50	29	53	88	33	34	12	10	8	29	74

PROVEN FEMALES

Top 1% \$B	Top 3% \$G	Top 10% Marb	Top 20% MCW
Top 1% \$C	Top 4% CWT	Top 10% RADG	Top 25% Fat
Top 1% SC	Top 5% WW	Top 10% YW	
Top 2% REA	Top 10% CED	Top 15% \$W	
Top 3% \$F	Top 10% CEM	Top 15% YH	

- Blackcap 7711 is an outstanding carcass female sired by the multi-trait leader, Rampage and produced by the high Marb. headliner of the Edisto Pines Farm donor program, Blackcap U115.
- The dam of Lot 36 is a direct daughter of the \$210,000 former 44 Farms and Murcielago Farms donor, New Design Z38 sired by the proven Marb. sire in the Express Ranches roster, Prime Star. The dam of Lot 36 records ultrasound ratios IMF 10@129 and REA 10@102. Blackcap 1165, a maternal sister to Lot 36 is the current Number 2 Marb. proven dam and a feature of the 44 Farms donor program.
- Due 11/12/20 to Tex Playbook 5437.



Baldridge Rita R138 / The foundation third dam of Lot 35 and longtime anchor of the Daltons on the Sycamore donor program.

Rampage Daughters

37

Crazy K Rita 7173

Birth Date: 8-14-2017

Cow *18892151

Tattoo: 7173

#MCC Daybreak
Quaker Hill Rampage 0A36
+*16925771 +*QHF Blackcap 6E2 of 4V16 4355

#+Boyd New Day 8005
#MCC Miss Focus 134
Ideal 4355 of 0T26 2440
*QHF Blackcap 4V16 of 1H8

*GAR Advance
2T Rita 5017
+*18366443 +SMR Rita 9502

#+*GAR Progress
GAR 5050 New Design A84
#*Connealy All Around
+EF Rita 2224

CED	BW	WW	YW	RADG	DMI	YH	SC	DOC
+7	+1.9	+64	+108	+25	+62	+6	+86	+10
HP	CEM	MILK	MW	MH	CW	MARB	RE	FAT
+12.0	+7	+29	+53	+1	+48	+92	+1.16	-.019
\$M	\$59	\$W	\$72	\$F	\$94	\$G	\$74	\$B
+168								
\$C	\$277	\$D	\$E	\$F	\$G	\$H	\$I	\$J
46	59	52	62	20	69	33	69	51

PROVEN FEMALES

Top 1% REA	Top 10% \$W	Top 15% CWT	Top 25% RADG
Top 3% \$B	Top 10% Fat	Top 15% WW	
Top 3% \$C	Top 10% Marb	Top 20% YW	
Top 3% \$G	Top 15% \$F	Top 25% Milk	



CCC Pow 1709 / Lot 39

- Rita 7173 is a carcass female from the top of the Crazy K fall calving program and she blends the multi-trait leader in the Quaker Hill Farm and Mapleton Farm programs, Rampage with an outcross dam who combines Advance and All Around.
- Rita 7173 posts a WR 1@100. The dam of Lot 37 records a WR 1@101.
- Due 8/29/20 to Jindra Acclaim

38

Crazy K Rita 7218

Birth Date: 9-19-2017

Cow *18922058

Tattoo: 7218

#MCC Daybreak
Quaker Hill Rampage 0A36
+*16925771 +*QHF Blackcap 6E2 of 4V16 4355

#+Boyd New Day 8005
#MCC Miss Focus 134
Ideal 4355 of 0T26 2440
*QHF Blackcap 4V16 of 1H8

#CA Future Direction 5321
Rita 5FH8 of Rita 2V5 FD
+*15142236 +*Rita 2V5 of 2536 1407

#GAR Precision 1680
CA Miss Power Fix 308
#Bon View New Design 1407
GAR Precision 2536

CED	BW	WW	YW	RADG	DMI	YH	SC	DOC
+7	+1.9	+58	+103	+26	+60	+9	+1.06	-4
HP	CEM	MILK	MW	MH	CW	MARB	RE	FAT
+12.3	+10	+23	+44	+5	+56	+77	+94	-.028
\$M	\$57	\$W	\$57	\$F	\$105	\$G	\$65	\$B
+170								
\$C	\$278	\$D	\$E	\$F	\$G	\$H	\$I	\$J
49	65	59	62	27	36	29	98	27

PROVEN FEMALES

Top 3% \$B	Top 5% CWT	Top 20% Marb	Top 25% WW
Top 3% \$C	Top 5% Fat	Top 20% RADG	Top 25% YW
Top 3% REA	Top 10% \$G	Top 25% MH	
Top 4% \$F	Top 15% YH	Top 25% SC	

39

CCC Pow 1709

Birth Date: 12-16-2016

Cow *18900735

Tattoo: 1709

#MCC Daybreak
Quaker Hill Rampage 0A36
+*16925771 +*QHF Blackcap 6E2 of 4V16 4355

#+Boyd New Day 8005
#MCC Miss Focus 134
Ideal 4355 of 0T26 2440
*QHF Blackcap 4V16 of 1H8

#*VAR Discovery 2240
CCC Pow 1513
#18361235 +CCC Pow 1326

#*AAR Ten X 7008 SA
+*Deer Valley Rita 0308
#*Connealy Consensus 7229
+MGSA Pow 8002

CED	BW	WW	YW	RADG	DMI	YH	SC	DOC
+2	+3.3	+86	+148	+26	+2.00	+1.0	+49	+13
HP	CEM	MILK	MW	MH	CW	MARB	RE	FAT
+14.1	+4	+32	+104	+7	+69	+70	+1.10	-.029
\$M	\$57	\$W	\$90	\$F	\$101	\$G	\$64	\$B
+165								
\$C	\$271	\$D	\$E	\$F	\$G	\$H	\$I	\$J
50	47	13	23	96	53	62	70	12

PROVEN FEMALES

Top 1% \$W	Top 2% MCW	Top 10% \$G	Top 20% RADG
Top 1% CWT	Top 4% \$B	Top 10% MH	Top 25% Marb
Top 1% REA	Top 4% \$C	Top 10% Milk	
Top 1% WW	Top 5% Fat	Top 15% HPreg	
Top 1% YW	Top 10% \$F	Top 15% YH	

- Rita 7218 is a direct daughter of the foundation Jac's Ranch Blackcap, Rita 5FH8 sired by the proven growth, RE, \$B and \$C sire, Rampage.
- Rita 7218 posts a WR 1@101. The dam of Lot 38 records a WR 3@102 and a YR 3@104 while showing ultrasound ratios IMF 52@101 and REA 52@103. Maternal siblings to Lot 38 include: Rita 1C16, the featured REA proven dam in the Daltons on the Sycamore program; Court Manor 1C1, the REA sire at Three Trees Ranch; Rita 1C11, the REA proven donor at Ogeechee Angus; Rita 7M89, the \$35,000 selection of Express Ranches and Vista Farms through the Wehrmann dispersal who went onto produce, Rita 7332, the \$200,000 half interest selection of Deer Valley Farm as the top-selling female of the 2013 Big Event; Rita 0M11, the \$29,000 selection of Three Trees Ranch in the Wehrmann dispersal; and Rita 7068, the dam of the \$88,000 top-selling female of the first Woodside sale, Rita 0242 selected by Riverbend Ranch.
- Due 11/13/20 to Bar R Jet Black 5063.

- Pow 1709 is a proven daughter of the Quaker Hill Farm and Mapleton Farm sire, Rampage and this high growth female stems from a dam who blends the \$110,000 Discovery with a daughter of the foundation female sire, Consensus.
- The dam of Lot 39 records a WR 3@108 while showing ultrasound ratios IMF 1@118 and REA 1@104.
- Due 8/1/20 to Sydgen Enhance.



Rita 5FH8 of Rita 2V5 FD /

A daughter of this former Jac's Ranch matriarch sells as Lot 38.



RB Lady 7125-890-2170 / A daughter sells as Lot 40.

40 Double R Bar Lady E344

Birth Date: 10-26-2017

Cow #18925004

Tattoo: E344

#MCC Daybreak
Quaker Hill Rampage 0A36
+*16925771 +*QHF Blackcap 6E2 of 4V16 4355

#*Boyd New Day 8005
#MCC Miss Focus 134
Ideal 4355 of 0T26 2440
*QHF Blackcap 4V16 of 1H8

#GAR Objective 7125
RB Lady 7125-890-2170
+*17285923 *RB Lady Standard 305-890

#*SS Objective T510 0T26
+GAR 1407 New Design 1463
#*LCC New Standard
+*BA Lady 6807 305

CED	BW	WW	YW	RADG	DMI	YH	SC	DOC									
+7	+2.7	+80	+139	+30	+1.10	+1.1	+1.50	+2									
HP	CEM	MILK	MW	MH	CW	MARB	RE	FAT									
+14.9	+7	+32	+92	+9	+63	+4.2	+1.19	-0.26									
\$M	+58	\$W	+86	\$F	+105	\$G	+52	\$B	+157	\$C	+262						
CED	BW	WW	YW	DMI	YH	SC	DOC	HP	CEM	MILK	MW	MH	CW	MB	REA	FAT	TEND
57	69	15	21	49	12	5	88	6	88	27	30	23	18	56	3	15	71

PROVEN FEMALES

Top 1% \$W	Top 3% RADG	Top 5% YH	Top 10% SC
Top 1% REA	Top 4% \$F	Top 10% \$B	Top 25% \$G
Top 1% WW	Top 4% MCW	Top 10% \$C	
Top 1% YW	Top 4% MH	Top 10% HPreg	
Top 2% CWT	Top 5% Fat	Top 10% Milk	

- Lady E344 is a balanced-trait RE daughter of the multi-trait sire, Rampage and stems from the cornerstone of the Lady Standard family in the Quaker Hill Farm, Double R Bar Ranch and Spring Grove Ranch joint embryo programs, Lady 7125-890-2170.
- Lady E344 posts a BR 1@99 and a WR 1@100. The dam of Lot 40 records a BR 1@93 and a WR 1@121 while showing ultrasound ratios IMF 8@100 and REA 8@104. Lady D101, a maternal sister to Lot 40 and dam of Lot 27 in this offering was selected by Z Cattle Company in the 2020 Crazy K Sale.
- Due 9/19/20 to SS Enforcer E812.

41 Crazy K Blackbird 7622

Birth Date: 8-23-2017

Cow #19109018

Tattoo: 7622

#MCC Daybreak
Quaker Hill Rampage 0A36
+*16925771 +*QHF Blackcap 6E2 of 4V16 4355

#*Boyd New Day 8005
#MCC Miss Focus 134
Ideal 4355 of 0T26 2440
*QHF Blackcap 4V16 of 1H8

#*Connealy Consensus 7229
EXAR Blackbird 1757
+16882881 +Riverbend Blackbird 4131

#*Connealy Consensus
Blue Lilly of Conanga 16
#Bon View New Design 1407
Davis Yr Blackbird 558H

CED	BW	WW	YW	RADG	DMI	YH	SC	DOC									
+10	+0	+57	+100	+24	+61	+6	+90	+9									
HP	CEM	MILK	MW	MH	CW	MARB	RE	FAT									
+6.9	+6	+24	+61	+3	+41	+1.02	+1.10	-.014									
\$M	\$B		\$F		\$G		\$B		\$C		\$251						
54	37	51	57	35	65	36	74	92	93	68	47	55	55	5	5	17	38

PROVEN FEMALES

Top 1% REA	Top 5% Marb	Top 15% CED
Top 2% \$G	Top 10% Fat	Top 20% BW
Top 5% \$B	Top 15% \$C	Top 25% MCW

- Blackbird 7622 is a low-birth and carcass female sired by Rampage and produced by the foundation member of the carcass merit leading Blackbird family in the South River Genetics program, Blackbird 1757.
- The dam of Lot 41 is a direct daughter of the Express Ranches and A Cross Ranch matriarch, Blackbird 4131 sired by the cornerstone female sire, Consensus and she records ultrasound ratios IMF 4@105 and REA 4@103.
- Has a 7/12/20 bull calf, Lot 41A, sired by VAR Heritage 5038, tattoo 0603.

42 Crazy K Momentum 7708

Birth Date: 2-22-2017

Cow #19298362

Tattoo: 7708

#*GAR Progress
GAR Momentum
*17354145 +GAR Big Eye 1770

#*GAR Predestined
*GAR Objective 2345
#*ALC Big Eye D09N
GAR Objective 3387

+*GAR Sunrise
Chair Rock Sunrise 2171
17505246 +Chair Rock Predestined 0112

#MCC Daybreak
+*GAR Objective R227
#*GAR Predestined
+Chair Rock Objective 7067

CED	BW	WW	YW	RADG	DMI	YH	SC	DOC									
+10	+1.9	+51	+85	+1.9	+66	+2	-1.16	+23									
HP	CEM	MILK	MW	MH	CW	MARB	RE	FAT									
+11.5	+7	+20	+27	+1	+25	+1.19	+1.10	-0.40									
\$M	\$B	\$W	\$F	\$G	\$B	\$C	\$C	\$268									
+68	+49	+66	+88	+154	+268												
CED	BW	WW	YW	DMI	YH	SC	DOC	HP	CEM	MILK	MW	MH	CW	MB	REA	FAT	TEND
19	28	90	96	21	91	91	33	34	84	80	91	87	94	8	4	11	88

PROVEN FEMALES

Top 1% \$G	Top 2% Marb	Top 15% CED
Top 1% REA	Top 5% \$C	Top 15% Doc
Top 2% Fat	Top 10% \$B	Top 20% \$M

- Momentum 7708 is a direct daughter of the former feature of the Mile High Angus donor program, Sunrise 2171 sired by the proven Marb. sire, Momentum.
- Has a 7/22/20 heifer calf, Lot 42A, sired by Baldrige Colonel C251, tattoo 0609.



Crazy K Momentum 7708 / Lot 42



Crazy K Barbara 2565 /
A daughter sells as Lot 43.

43

Crazy K Barbara 7292

Birth Date: 11-1-2017

Cow #**18967777

Tattoo: 7292

#Vermilion Payweight J847

#Vermilion Dateline 7078

Basin Payweight 006S
#*15332050

Vermilion Lass 7969
+Basin Lucy 3829 #CA Future Direction 5321
Basin Lucy 178E

#Sitz Upward 307R

#*Connealy Onward
Sitz Henrietta Pride 81M
#Isu Imaging Q 9111
LCC Mc Henry Barbar MG382

Crazy K Barbara 2565
+*17347386 #+EXAR Barbara T020

CED	BW	WW	YW	RADG	DMI	YH	SC	DOC
+11	-.3	+62	+118	+.27	+1.31	+.9	+.73	+11
HP	CEM	MILK	MW	MH	CW	MARB	RE	FAT
+11.7	+12	+31	+81	+1.1	+62	+.94	+.54	+.028
\$M	+	\$W	+	\$F	+	\$G	+	\$C
+42		+69		+113		+63		+270
CED	BW	WW	YW	DMI	YH	SC	DOC	HP
18	24	33	19	82	22	54	70	43
CEM	MILK	MW	MH	CW	MARB	RE	FAT	TEND
50	40	20	8	11	9	29	56	46

PROVEN FEMALES

Top 1% MH	Top 10% \$G	Top 10% RADG	Top 15% WW
Top 2% \$B	Top 10% \$W	Top 10% YW	Top 15% YH
Top 2% \$F	Top 10% CED	Top 15% BW	
Top 2% CWT	Top 10% MCW	Top 15% CEM	
Top 4% \$C	Top 10% Marb	Top 15% Milk	

- Barbara 7292 is a daughter of the Crazy K and Hillhouse donor, Barbara 2565 sired by the proven female sire, Payweight 006S.
- The dam of Lot 43 is a full sister to the \$400,000 valued Express Ranches and BoBo Angus sire, Upshot and she blends the growth and CW sire, Upward with the Pathfinder Dam, Barbara T020. Maternal sisters to the dam of Lot 43 include: the \$45,000 former Crazy K Ranch donor now in the Jac's Ranch program, Barbara 1015.
- Maternal sisters to Lot 43 include the 2019 Crazy K Sale highlights: Barbara 803F, the \$42,500 selection of Deer Valley Farm; and Barbara 804F, the \$22,500 selection of Spruce Mountain Ranch.
- Due 8/18/20 to VAR Heritage 5038.



EXAR Upshot 0562B / A full sister to this Express Ranches and BoBo Angus sire produced the female selling as Lot 43.



EXAR Barbara 1015 / The \$45,000 maternal sister to the dam of Lot 43 and former Crazy K and Jac's Ranch donor.

Fall Calving Females

44

Curtin Erica 7092

Birth Date: 1-24-2017

Cow *18868272

Tattoo: 7092

#*Basin Payweight 006S
Basin Payweight 1682
#*17038724 21AR O Lass 7017

#Vermilion Payweight J847
+Basin Lucy 3829
#HARB Pendleton 765 JH
21AR O Lass F24A

#*Musgrave Foundation
Curtin Erica 3081
17584661 #*Blue Ston Erica 0068

#*Kesslers Frontman R001
MCATL Blackcap Juara 29-434
#TC Total 410
+VAR Erica 2012

CED	BW	WW	YW	RADG	DMI	YH	SC	DOC									
+9	+6	+68	+120	+28	+90	+3	+1.28	+11									
HP	CEM	MILK	MW	MH	CW	MARB	RE	FAT									
+9.3	+12	+34	+67	+1	+48	+94	+28	+0.33									
\$M	+48	\$W	+82	\$F	+90	\$G	+59	\$B	+149	\$C	+241						
CED	BW	WW	YW	DMI	YH	SC	DOC	HP	CEM	MILK	MW	MH	CW	MB	REA	FAT	TEND
3	4	27	22	72	61	8	72	65	28	12	20	48	34	23	87	85	5

PROVEN FEMALES

Top 2% \$W	Top 10% WW	Top 15% CEM	Top 20% \$F
Top 10% Marb	Top 10% YW	Top 15% CWT	Top 20% MCW
Top 10% Milk	Top 15% \$B	Top 15% SC	Top 25% CED
Top 10% RADG	Top 15% \$G	Top 20% \$C	

- Erica 7092 stems from the family that produced the legendary female sire, Right Time and blends the female sire, Payweight 1682 with a proven daughter of the Musgrave Angus sire, Foundation.
- Due 11/19/20 to Bubs Southern Charm AA31.

46

Green Blackette 1709

Birth Date: 9-1-2017

Cow *19069144

Tattoo: 1709

#Sitz Upward 307R
Plattmeyer Weigh Up K360
#*16692552 #Barbara of Plattmeyer 337

#*Connealy Onward
Sitz Henrietta Pride 81M
#GAR Retail Product
Barbara of Plattmeyer 311

#*SAV Bismarck 5682
Mc Cracken Vu Blackette 283
16670977 Mc Cracken Vu Blackette 224

#*GAR Grid Maker
SAV Abigale 0451
#SAV 8180 Traveler 004
Mc Cracken Vu Blackette 141

CED	BW	WW	YW	RADG	DMI	YH	SC	DOC									
+7	+2.1	+60	+110	+29	+49	+8	+46	+14									
HP	CEM	MILK	MW	MH	CW	MARB	RE	FAT									
+12.0	+14	+21	+74	+8	+39	+56	+40	+0.01									
\$M	+52	\$W	+52	\$F	+88	\$G	+46	\$B	+134	\$C	+226						
CED	BW	WW	YW	DMI	YH	SC	DOC	HP	CEM	MILK	MW	MH	CW	MB	REA	FAT	TEND
57	77	19	18	62	8	76	65	33	9	65	14	6	18	40	69	55	86

PROVEN FEMALES

Top 5% CEM	Top 5% RADG	Top 15% YW	Top 20% YH
Top 5% MH	Top 15% MCW	Top 20% WW	Top 25% \$F

- Blackette 1709 is a daughter of the now-deceased Deer Valley Farm growth sire, Weigh Up and stems from a dam who blends the foundation SAV sires, Bismarck and Traveler 004.
- Due 11/15/20 to VAR Heritage 5038.



HR Blackcap 6647 / The \$22,000 maternal sister to Lot 45 selected by Dixie Valley in the 2019 Spruce Mountain Ranch Sale.

45

Crazy K Blackcap 5266

Birth Date: 12-28-2015

Cow *18378283

Tattoo: 5266

#*GAR-EGL Protege
Baldridge Waylon W34
#*16476949 *Baldridge Blackcap T163

#*Rito 112 of 2536 Rito 616
LB 6807 Isabel 339
#*Woodhill Foresight
Baldridge Blackcap P326

#MCC Daybreak
Quaker Hill Blackcap 0A32
+*16925768 +*QHF Blackcap 6E2 of 4V16 4355

#*Boyd New Day 8005
#MCC Miss Focus 134
Ideal 4355 of 0T26 2440
*QHF Blackcap 4V16 of 1H8

CED	BW	WW	YW	RADG	DMI	YH	SC	DOC									
+4	+2.3	+73	+122	+25	+1.20	+2	+75	+18									
HP	CEM	MILK	MW	MH	CW	MARB	RE	FAT									
+10.2	+9	+24	+69	+0	+49	+1.01	+59	+0.14									
\$M	+58	\$W	+74	\$F	+86	\$G	+68	\$B	+155	\$C	+259						
CED	BW	WW	YW	DMI	YH	SC	DOC	HP	CEM	MILK	MW	MH	CW	MB	REA	FAT	TEND
65	55	48	57	44	96	58	46	55	65	79	73	96	68	10	71	48	81

PROVEN FEMALES

Top 3% WW	Top 5% Marb	Top 10% \$C	Top 25% RADG
Top 5% \$G	Top 5% YW	Top 15% CWT	Top 25% REA
Top 5% \$W	Top 10% \$B	Top 15% MCW	

Owned with Venado Creek, San Augustine, TX

- Blackcap 5266 is a direct daughter of the \$340,000 valued Spruce Mountain Ranch and High Roller Angus donor, Blackcap 0A32 sired by the Express Ranches total performance sire, Waylon.
- Blackcap 5266 carries ultrasound ratios IMF 1@100 and REA 1@100. The dam of Lot 45 records a BR 1@78, a WR 1@121 and a YR 1@110 while showing ultrasound ratios IMF 94@99 and REA 94@100.
- Maternal siblings to this proven female include: Manning 4EX9, the \$67,000 top-selling bull of the spring 2015 Quaker Hill Sale selling to Kowpoke Cattle Company and is a featured member of the Select Sires roster; Blackcap 6503, the \$60,000 top-selling open heifer of the record-setting first High Roller sale selected by 44 Farms; Blackcap 6597, the \$60,000 second high-selling bred heifer of the 2018 High Roller Sale selling to Crazy K Ranch; Power Alley 6571, the \$55,000 top-selling bull of the 2018 Spring Sale at 44 Farms selling to ABS Global; Blackcap 9033, the \$35,000 selection of B&B Livestock in the 2019 Spruce Mountain Sale; Blackcap 6647, the \$22,000 selection of Dixie Valley Farms in that same offering; and Ballast, the \$13,000 sixth high-selling bull of the 2020 Riverbend Ranch Bull Sale selected by Goose Creek Farms.
- Due 11/21/20 to Tex Playbook 5437.

Breela 7750



KCF Miss Consensus Y302 /

A daughter of this Knoll Crest Farm and Bartels Angus donor sells as Lot 47.

47

PV Breela 7750

Birth Date: 8-20-2017

Cow #*18865349

Tattoo: 7750

+baldrige Xpand x743
Baldrige Colonel C251
+*18493773 *Baldrige Isabel Y69

#*Hoover Dam
Baldrige Queen S87
#*Styles Upgrade J59
+Baldrige Isabel T935

#*Connealy Consensus
KCF Miss Consensus Y302
+*17258998 +KCF Miss Protege W148

#KMK Alliance 6595 I87
Blinda of Conanga 004
#*GAR-EGL Protege
Breela of Conanga 3991

- Breela 7750 is a direct daughter of the featured Knoll Crest Farms and Bartels Angus donor, Consensus Y302 sired by the \$580,000 Spruce Mountain Ranch and Dixie Valley sire, Colonel C251.
- The dam of Lot 47 is a flush sister to the rare and valuable Consent Y75 and records a WR 3@108 and a YR 3@99 while carrying an ultrasound REA ratio 2@104. Maternal siblings to the dam of Lot 47 include: the proven Knoll Crest Farm and Alta Genetics roster member, TheRock A473.
- Has a 7/14/20 bull calf, Lot 47A, sired by EXAR Monumental 6056B, tattoo 0604.

CED	BW	WW	YW	RADG	DMI	YH	SC	DOC					
+4	+2.2	+67	+122	+30	+79	+6	+56	+21					
HP	CEM	MILK	MW	MH	CW	MARB	RE	FAT					
+6.4	+10	+19	+66	+5	+44	+55	+70	-.019					
\$M	+43	\$W	+59	\$F	+87	\$G	+51	\$B	+139	\$C	+223		
CED	BW	WW	YW	ADG	CEM	MILK	MW	MH	CW	MB	REA	FAT	TEND
90	31	32	9	62	44	37	47	94	26	87	25	36	35

CED	BW	WW	YW	DMI	YH	SC	DOC	HP	CEM	MILK	MW	MH	CW	MB	REA	FAT	TEND
90	91	32	9	62	44	37	47	94	26	87	25	36	35	60	13	6	64

PROVEN FEMALES

Top 3% RADG	Top 10% WW	Top 20% MCW	Top 25% CWT
Top 5% YW	Top 15% REA	Top 25% \$B	Top 25% MH
Top 10% Fat	Top 20% Doc	Top 25% \$G	



KCF Bennett TheRock A473 /

A maternal sister to this Knoll Crest Farms and Alta Genetics roster member produced the female selling as Lot 47.



15898 State Route 247
Seaman, OH 45679
937-205-2996

On behalf of Optum Angus we are excited to welcome you to the 2nd Annual Crazy K Fall Female Opportunity Sale. We are enthusiastic about the elite genetics that we have to offer this year. Lot 48, Optum's Blackbird 0035 a No Doubt x Blackbird 7204 (Power Play's full sister) is a preview of the next generation of the "Cattle of the Future" at Optum Angus. We would like to personally thank Sammy and Sherry Kiser, Charlie Adkins and the entire Crazy K Crew for allowing us to be apart of the Fall Female Opportunity Sale.

Owners: Wes & Claudia Mitchell • Tim & Patty Sandker
Andrew & Courtney Mitchell
Operations Manager: Dan DeMeyer 937-779-1271
Office Manager: Courtney Mitchell

Herdsmen: Kyle Thompson
optumangus@gmail.com
www.optumangus.com

Blackbird 0035



Vintage Blackbird 7204 / The \$400,000
valued dam of Lot 48.



48

Optum's Blackbird 0035

Birth Date: 3-5-2020

Cow +*19759145

Tattoo: 0035

#*Mogck Bullseye

#MOGCK Sure Shot

Hoover No Doubt

Mogck Mary 1255

+*17882682 *Miss Blackcap Ellston J2

#*SydGen CC&7

#Miss Blackcap Ellston D154

#*Basin Payweight 1682

#*Basin Payweight 006S

Vintage Blackbird 7204

21AR O Lass 7017

+*18748522 +*Sandpoint Blackbird 8809

#*Connealy Onward

+Riverbend Blackbird 4301

CED	BW	WW	YW	RADG	DMI	YH	SC	DOC
+6	+2.6	+76	+139	+28	+1.92	+5	+1.38	+26
HP	CEM	MILK	MW	MH	CW	MARB	RE	FAT
+12.5	+7	+24	+107	+9	+70	+91	+60	+034
SM	+50	\$W	+69	\$F	+115	\$G	+62	\$B
								+177
								\$C
								+280
CED	BW	WW	YW	DMI	YH	SC	DOC	HP
CEM	MILK	MW	MH	CW	MARB	RE	FAT	TEND
21	30	10	10	99	52	5	20	14
58	73	8	10	9	36	49	84	77

NON-PARENT FEMALES

Top 2% \$F	Top 4% MCW	Top 15% \$G	Top 20% HPreg
Top 3% \$B	Top 4% WW	Top 15% \$W	Top 20% Marb
Top 3% CWT	Top 5% \$C	Top 15% Doc	Top 20% RADG
Top 3% YW	Top 10% MH	Top 15% SC	

Selling half interest

Owned by Optum Angus, Seaman, OH

- Blackbird 0035 is a direct daughter of the \$400,000 valued anchor of the Optum Angus and Vintage Angus Ranch joint embryo programs, Blackbird 7204 sired by the Spruce Mountain Ranch and Alta Genetics sire, No Doubt.
- The dam of Blackbird 0035 joined the Optum program as the 200,000 half-interest selection as the top-valued bred heifer of the 2018 Vintage Angus Sale. Full siblings to the powerful dam of Lot 48 include: the \$730,000 record-selling Power Play 7018 selected in the 2018 Vintage Angus Ranch Bull Sale by Rooney Angus Ranch; and Blackbird 7260, the \$200,000 selection of Riverbend Ranch in the 2017 Vintage Angus Sale.
- Maternal siblings to this powerful donor include: Frontier 3011, the \$330,000 Vintage Angus and Guthrie Farms sire; Blackbird 2189, the \$300,000 valued and top-selling donor of the 2015 Vintage Angus Ranch Sale selected by Deer Valley Farm; Blackbird 7480, the \$250,000 top-selling open heifer of the 2018 Vintage Angus Sale selected by Riverbend Ranch; Blackbird 2318, the \$220,000 valued Spruce Mountain Ranch and Express Ranches donor; Blackbird 8128, the \$150,000 second high-selling open heifer of the 2018 Vintage Angus Sale selected by Riverbend Ranch; Blackbird 1218, the \$110,000 valued half interest highlight of the 2015 Deer Valley Farm Sale now anchoring the Blackbird family in the Jac's Ranch program.

Blackbird 7040



FWY Blackbird 7040 of V135 / Lot 49

49

FWY Blackbird 7040 of V135

Birth Date: 3-11-2017

Cow #**19050818

Tattoo: 7040

#*AAR Ten X 7008 SA

#*Mytty In Focus

VAR Discovery 2240

#AAR Lady Kelton 5551

#*17262835 +*Deer Valley Rita 0308

#Sitz Upward 307R

*GAR Objective 2345

#*Connealy Impression

#Connealy Reflection

FWY 6262 of T1088 V135

Pearl Pammy of Conanga 194

+*17585457 +*Riverbend Blackbird T1088

#+E&B 1680 Precision 1023

+Riverbend Blackbird 4196

Owned by Optum Angus, Seaman, OH

• Blackbird 7040 is a low-birth and Marb. female from the top of the Optum Angus fall calving program and she blend the \$110,000 44 Farms and Vintage Angus sire, Discovery with a direct daughter of the \$50,000 Blackbird T1088 by the phenotype sire, Impression.

• The \$24,000 valued dam of Lot 49 featured in the Fairway Angus and Blessed West Angus programs posts a BR 2@88, a WR 2@100 and a YR 1@99 while showing an ultrasound IMF ratio 11@110. Maternal sisters to Lot 49 include: Ethyl 7022 selected by RC Ranch in the 2019 Genomic Gems Sale; and Blackbird 7302, a second-generation female in the Fairway Angus program.

• Due 9/24/20 to Deer Valley Growth Fund.

CED	BW	WW	YW	RADG	DMI	YH	SC	DOC
+6	+1.0	+63	+115	+26	+1.05	+4	+1.10	+18
HP	CEM	MILK	MW	MH	CW	MARB	RE	FAT
+8.1	+13	+23	+44	+2	+44	+1.31	+64	-.047
\$M	\$B	\$W	\$F	\$G	\$B	\$C	\$C	\$C
+64	+66	+85	+88	+173	+289			

CED	BW	WW	YW	DMI	YH	SC	DOC	HP	CEM	MILK	MW	MH	CW	MB	REA	FAT	TEND
63	47	32	27	70	47	22	37	68	18	59	53	57	32	3	27	6	39

PROVEN FEMALES

Top 1% \$G	Top 2% SC	Top 20% \$W	Top 25% SC
Top 1% Fat	Top 10% CEM	Top 20% RADG	
Top 1% Marb	Top 10% YW	Top 20% REA	
Top 2% \$B	Top 15% WW	Top 25% CWT	



FWY 6262 of T1088 V135 / A daughter of this \$24,000 valued Fairway Angus and Blessed West Angus donor sells as Lot 49.



Riverbend Blackbird T1088 / The \$50,000 grandam of Lot 49.



Crazy K Rita 5133 / Lot 50

50

Crazy K Rita 5133 [OSF]

Birth Date: 8-16-2015

Cow #18269505

Tattoo: 5133

Quaker Hill Rampage 0A36

+*16925771 +*QHF Blackcap 6E2 of 4V16 4355

#*AAR Ten X 7008 SA

Woodside Rita 3423

*17801081 +*Deer Valley Rita 1663

#MCC Daybreak

#*Boyd New Day 8005

#MCC Miss Focus 134

Ideal 4355 of OT26 2440

*QHF Blackcap 4V16 of 1H8

#*Mytty In Focus

#AAR Lady Kelton 5551

#*Connealy Consensus 7229

*GAR Objective 2345

CED	BW	WW	YW	RADG	DMI	YH	SC	DOC									
+13	+2	+63	+110	+26	+76	+8	+1.71	+3									
HP	CEM	MILK	MW	MH	CW	MARB	RE	FAT									
+15.4	+13	+31	+66	+8	+47	+93	+1.16	-.017									
\$M	\$W	\$F	\$G	\$B	\$C	\$T	\$E	\$D									
+54	+73	+90	+75	+165	+268												
CED	BW	WW	YW	DMI	YH	SC	DOC	HP	CEM	MILK	MW	MH	CW	MB	REA	FAT	TEND
6	10	86	83	13	85	8	87	10	30	44	83	65	83	13	10	17	10

PROVEN FEMALES

Top 1% REA	Top 5% CED	Top 15% Milk	Top 20% RADG
Top 3% \$G	Top 10% \$W	Top 15% WW	Top 20% YH
Top 3% SC	Top 10% CEM	Top 15% YW	Top 25% BW
Top 4% \$B	Top 10% Fat	Top 20% \$F	
Top 4% HPreg	Top 10% MH	Top 20% CWT	
Top 5% \$C	Top 10% Marb	Top 20% MCW	

Owned by Optum Angus, Seaman, OH

• Rita 5133 is a direct daughter of the \$20,000 Rita 3423, the former Crazy K Ranch donor who is now in the High Roller Angus program sired by the breed's top multi-trait source of growth, RE, \$B and \$C, Rampage.

• Rita 5133 is a low-birth and carcass female from the heart of the Optum donor program and posts a WR 1@100 while carrying ultrasound ratios IMF 2@100 and REA 2@100. The dam of Lot 50 combines Ten X with a direct daughter of the \$3.5 million producer in the Deer Valley Farm program, Objective 2345 sired by the foundation female sire, Consensus and records a BR 2@99, a WR 2@105 and a YR 2@101 while showing ultrasound ratios IMF 13@101 and REA 13@105. Maternal sisters to the dam of Lot 50 include: Rita 5309, the \$55,000 valued half interest selection of Hillhouse Angus in a past Deer Valley Farm sale; and Rita 6263, the \$20,000 selection of Pollard Farms in the 2016 Deer Valley Sale.

• Due 1/23/21 to E&B Plus One.



Woodside Rita 3423 / A daughter of this former Crazy K Ranch donor sells as Lot 50.



Deer Valley Rita 1663 / A granddaughter sells as Lot 50.

Discovery 9072





51

Blackstone Discovery 9072

Birth Date: 2-14-2019

Cow *19456969

Tattoo: 9072

#*AAR Ten X 7008 SA

#*Mytty In Focus

VAR Discovery 2240

#AAR Lady Kelton 5551

#*17262835 +*Deer Valley Rita 0308

#Sitz Upward 307R

*GAR Objective 2345

#*EXAR Denver 2002B

#*EXAR Upshot 0562B

EXAR Blackbird 4714

+Exar Royal Lass 1067

+*17740185 +Deer Valley Blackbird 2319

#*Connealy Consensus 7229

+Deer Valley Blackbird 8804

CED	BW	WW	YW	RADG	DMI	YH	SC	DOC
+9	+1.4	+78	+147	+33	+1.79	+9	+2.11	+18
HP	CEM	MILK	MW	MH	CW	MARB	RE	FAT
+7.3	+13	+31	+93	+9	+73	+66	+79	-.006
\$M	\$W	\$F	\$G	\$B	\$C	\$T	\$D	\$E
+48	+84	+118	+56	+175	+275			

CED	BW	WW	YW	DMI	YH	SC	DOC	HP	CEM	MILK	MW	MH	CW	MB	REA	FAT	TEND
24	30	24	9	90	47	2	40	92	21	33	27	24	13	41	25	36	17

NON-PARENT FEMALES

Top 1% \$F	Top 3% \$B	Top 10% MH	Top 20% REA
Top 1% YW	Top 3% \$W	Top 10% Milk	Top 25% Fat
Top 2% CWT	Top 3% WW	Top 15% CEM	
Top 2% RADG	Top 10% SC	Top 15% YH	
Top 2% SC	Top 10% MCW	Top 20% \$G	

Owned by Optum Angus, Seaman, OH

- Discovery 9072 is a powerful high growth bred heifer sired by the \$110,000 foundation female sire in the 44 Farms and Vintage Angus herd sire rosters, Discovery and stems from an outstanding producer who blends the record-selling Express Ranches sire, Denver with a daughter of the cornerstone female sire, Consensus.
- The dam of Lot 51 is a foundation female in the Blackstone Cattle Company program and records a WR 3@105 and a YR 2@103 while showing an ultrasound REA ratio 1@114. Epic 8001, a maternal sister to Lot 51 was the \$12,500 third high-selling open heifer of the 2018 Blackstone Sale selected by Express Ranches.
- Due 1/29/21 to E&B Plus One.

Cornerstone Families



EXAR Lucy 0905 / The \$25,000 grandam of Lot 52.

52

Black Gold Lucy K906

Birth Date: 2-14-2019

Cow #*19476193

Tattoo: K906

#*Basin Payweight 1682
VAR Power Play 7018
+*18717078 +*Sandpoint Blackbird 8809

#*Connealy Black Granite
Black Gold Lucy 569
+*18323636 +*EXAR Lucy 0905

#*Basin Payweight 006S
21AR O Lass 7017
#*Connealy Onward
+Riverbend Blackbird 4301

#*Connealy Consensus 7229
#Eura Elga of Conanga 9109
#Sitz Upward 307R
+Basin Lucy 3829

CED	BW	WW	YW	RADG	DMI	YH	SC	DOC
+8	+1.9	+75	+123	+24	+82	+4	+35	+23
HP	CEM	MILK	MW	MH	CW	MARB	RE	FAT
+10.7	+14	+35	+71	+5	+57	+67	+59	+020
\$M	\$W	\$F	\$G	\$B	\$C	\$D	\$E	\$F
+66	+90	+95	+52	+147	+257			
CED	BW	WW	YW	DMI	YH	SC	DOC	HP
42	73	27	45	47	76	79	29	60
CEM	MILK	MW	MH	CW	MARB	RE	FAT	TEND
4	15	41	48	30	44	58	60	79

NON-PARENT FEMALES

Top 1% \$W	Top 5% WW	Top 15% CWT	Top 25% Doc
Top 3% Milk	Top 15% \$C	Top 15% YW	
Top 5% CEM	Top 15% \$F	Top 20% \$B	

Owned by Optum Angus, Seaman, OH

- Lucy K906 is a direct daughter of the foundation Lucy in the Black Gold Genetics and Fairway Angus programs. Lucy 569 sired by the \$730,000 Rooney Angus Ranch and Vintage Angus sire, Power Play 7013.
- The dam of Lot 52 is a direct daughter of the \$25,000 Crazy K Ranch selection as the top-selling aged donor of a past Black Gold Genetics sale, Lucy 0905 sired by the phenotype sire, Black Granite. Power Play K902, a flush brother to Lot 52 was the top-selling bull calf of the 2019 Black Gold Genetics Sale selling to Lonesome River Ranch.
- Due 3/1/21 to E&B Plus One.

53

Blackstone Black Magic 9108

Birth Date: 2-21-2019

Cow #*19458687

Tattoo: 9108

*Silveiras Conversion 8064
Byergo Black Magic 3348
+*17803074 +*Byergo Elia Cupcake 5900

#Poss Total Impact 745
4E Gale 231
17503271 4E Girl 80

#*BT Crossover 758N
+EXG Saras Dream S609 R3
Byergo Picasso
+Byergo Miss Cupcake 3600

#TC Total 410
Poss Blackcap 5116
#Quaker Hill Objective 3J15
+4E Girl 216

CED	BW	WW	YW	RADG	DMI	YH	SC	DOC
-4	+5.3	+83	+162	+39	+1.77	+1.3	+1.99	+15
HP	CEM	MILK	MW	MH	CW	MARB	RE	FAT
+7.2	+10	+37	+119	+1.1	+80	+81	+1.03	-028
\$M	\$W	\$F	\$G	\$B	\$C	\$D	\$E	\$F
+44	+77	+126	+68	+195	+297			
CED	BW	WW	YW	DMI	YH	SC	DOC	HP
98	99	11	1	92	17	2	36	87
CEM	MILK	MW	MH	CW	MARB	RE	FAT	TEND
13	3	3	6	5	42	8	16	25

NON-PARENT FEMALES

Top 1% \$B	Top 1% Milk	Top 2% SC	Top 10% \$W
Top 1% \$F	Top 1% RADG	Top 3% \$C	Top 25% Marb
Top 1% CWT	Top 1% WW	Top 4% REA	
Top 1% MCW	Top 1% YH	Top 5% Fat	
Top 1% MH	Top 1% YW	Top 10% \$G	

Owned by Optum Angus, Seaman, OH

- Black Magic 9108 is a powerful growth female sired by the proven multi-trait sire, Black Magic 3348 and produced by an outcross dam who combines Total Impact and Objective 3J15.
- The dam of Lot 53 records a WR 2@103.

54

Blackstone Black Magic 9009

Birth Date: 1-18-2019

Cow #*19390763

Tattoo: 9009

*Silveiras Conversion 8064
Byergo Black Magic 3348
+*17803074 +*Byergo Elia Cupcake 5900

#*BT Crossover 758N
+EXG Saras Dream S609 R3
Byergo Picasso
+Byergo Miss Cupcake 3600

#*B/R New Day 454
MPA Belle Rose 106
+17263480 +Daltons Belle Rose 6268

#*Boyd New Day 8005
B/R Ruby 1224
#SAV 8180 Traveler 004
Daltons Belle Rose 7246

CED	BW	WW	YW	RADG	DMI	YH	SC	DOC
+7	+1.1	+65	+123	+30	+90	+1.0	+1.17	+24
HP	CEM	MILK	MW	MH	CW	MARB	RE	FAT
+10.1	+10	+34	+65	+2	+42	+78	+58	+013
\$M	\$W	\$F	\$G	\$B	\$C	\$D	\$E	\$F
+71	+76	+87	+58	+145	+259			
CED	BW	WW	YW	DMI	YH	SC	DOC	HP
36	23	51	42	34	42	28	11	56
CEM	MILK	MW	MH	CW	MARB	RE	FAT	TEND
41	5	42	63	59	31	42	47	2

NON-PARENT FEMALES

Top 5% Milk	Top 15% YW	Top 20% WW	Top 25% SC
Top 10% \$W	Top 20% \$C	Top 25% \$B	
Top 10% RADG	Top 20% \$G	Top 25% MCW	
Top 10% YH	Top 20% Doc	Top 25% Marb	

Owned by Optum Angus, Seaman, OH

- Black Magic 9009 is a balanced-trait bred heifer sired by the popular and proven multi-trait sire, Black Magic 3348 and produced by a dam who combines the longtime 44 Farms feature, New Day 454 with a third-generation Daltons on the Sycamore donor, Belle Rose 6268 by Traveler 004.
- Due 3/1/21 to SS Enforcer E812.

55

Optum's Enamel 8501

Birth Date: 8-2-2018

Cow #*19461296

Tattoo: 8501

*SydGen Exceed 3223
SydGen Enhance
18170041 SydGen Rita 2618

+*SydGen Googol
+*SydGen Forever Lady 1255
#*SydGen Liberty GA 6627
#Fox Run Rita 9308

#*EXAR Denver 2002B
Crazy K Enamel 6519
+*18569413 +Whitstone Enamel A038

#*EXAR Upshot 0562B
+Exar Royal Lass 1067
#TC Stockman 365
Triara Enamel 894U

CED	BW	WW	YW	RADG	DMI	YH	SC	DOC
+12	+8	+69	+122	+27	+1.31	+1.0	+1.10	+32
HP	CEM	MILK	MW	MH	CW	MARB	RE	FAT
+7.0	+17	+23	+57	+8	+58	+1.03	+62	+005
\$M	\$W	\$F	\$G	\$B	\$C	\$D	\$E	\$F
+70	+71	+105	+70	+175	+297			
CED	BW	WW	YW	DMI	YH	SC	DOC	HP
13	44	18	16	92	15	24	2	92
CEM	MILK	MW	MH	CW	MARB	RE	FAT	TEND
1	85	37	17	14	11	49	62	7

NON-PARENT FEMALES

Top 1% CEM	Top 5% \$F	Top 10% Marb	Top 15% YW
Top 2% \$C	Top 10% \$G	Top 10% YH	Top 20% \$W
Top 2% Doc	Top 10% CED	Top 15% CWT	Top 25% RADG
Top 3% \$B	Top 10% MH	Top 15% WW	

Owned by Optum Angus, Seaman, OH

- Enamel 8501 is an exciting first calf heifer sired by leading ORlgen roster member and feature of the Sydenstricker Genetics and Mogck Angus programs, Enhance and stems from a sensational first calf heifer sired by the record-selling Express Ranches sire, Denver.
- Enamel 8501 records a weaning ratio of 107 and a yearling ratio of 106 and descends from the many-time Whitestone Farms champion, Enamel 894U.
- Due 9/21/20 to Deer Valley Growth Fund.



Triara Enamel 894U / The foundation third dam of Lot 55.



Optum's Discovery 8502 /
Lot 56

56

Optum's Discovery 8502

Birth Date: 8-26-2018

Cow *19445999

Tattoo: 8502

#*Connealy Black Granite
QHF WWA Black Onyx 5Q11
+*18463791 +*Wilks Blackcap 0D82

#*Connealy Consensus 7229
#Eura Elga of Conanga 9109
#MCC Daybreak
+*QHF Blackcap 6E2 of 4V16 4355

#*VAR Discovery 2240
BJ Discovery 6231
+*18851664 +*BJ Upgrade 2139

#*AAR Ten X 7008 SA
+*Deer Valley Rita 0308
#*Styles Upgrade J59
+*BJ Predestined 186S

CED	BW	WW	YW	RADG	DMI	YH	SC	DOC									
+15	-.5	+82	+154	+3.5	+1.66	+1.0	+1.62	+21									
HP	CEM	MILK	MW	MH	CW	MARB	RE	FAT									
+10.6	+13	+34	+104	+1.1	+75	+65	+1.12	-.020									
\$M	+62	\$W	+93	\$F	+128	\$G	+61	\$B	+189	\$C	+307						
CED	BW	WW	YW	DMI	YH	SC	DOC	HP	CEM	MILK	MW	MH	CW	MARB	RE	FAT	TEND
8	17	20	4	86	37	7	28	75	44	18	12	8	14	42	7	22	39

NON-PARENT FEMALES

Top 1% \$B	Top 1% RADG	Top 3% MH	Top 10% SC
Top 1% \$C	Top 1% YW	Top 5% MCW	Top 10% YH
Top 1% \$F	Top 2% CED	Top 5% Milk	Top 15% \$G
Top 1% \$W	Top 2% REA	Top 10% CEM	Top 15% BW
Top 1% CWT	Top 2% WW	Top 10% Fat	

Owned by Optum Angus, Seaman, OH

- Discovery 8502 is another outstanding first calf heifer sired by the Quaker Hill Farm and ST Genetics roster member, Black Onyx 5Q11 and produced by a first calf heifer who blends the \$110,000 Discovery with a daughter of the female sire, Upgrade J59.
- Discovery 8502 balances a birth ratio of 94 with a yearling ratio of 102.
- Due 9/25/20 to Bar R Jet Black 5063.

57

Crazy K Rita 8163

Birth Date: 7-28-2018

Cow *19276815

Tattoo: 8163

*VAR Generation 2100
VAR Heritage 5038
+*18066052 +*SJH Complete of 6108 1564

#*Connealy Consensus 7229
+*Sandpoint Blackbird 8809
#*Summitcrest Complete 1P55
+*DRMCTR 111 Rita 6108

#*PA Safeguard 021
Crazy K Rita 5004
+*18202089 +*VAR Rita 3004

#*GAR New Design 5050
#*PA Lorna Marshall 2905-730
+*VAR Upfront 0392
+*KLR Rita 9206

CED	BW	WW	YW	RADG	DMI	YH	SC	DOC									
+0	+2.0	+66	+114	+23	+1.11	+6	+1.09	+29									
HP	CEM	MILK	MW	MH	CW	MARB	RE	FAT									
+10.9	-2	+35	+43	+1	+45	+1.11	+1.04	+034									
\$M	+64	\$W	+81	\$F	+79	\$G	+77	\$B	+156	\$C	+266						
CED	BW	WW	YW	RADG	HP	CEM	MILK	MW	MH	CW	MARB	RE	FAT	TEND			
82	45	38	43	68	51	39	27	47	98	9	65	76	33	8	3	68	41

NON-PARENT FEMALES

Top 3% \$G	Top 4% REA	Top 10% Marb	Top 25% YW
Top 3% Milk	Top 10% \$C	Top 15% \$B	
Top 4% \$W	Top 10% Doc	Top 20% WW	

Owned by Optum Angus, Seaman, OH

- Rita 8163 is a high maternal and carcass female sired by the Crazy K Ranch and EZ Angus Ranch sire, Heritage 5038 and was produced by a daughter of the foundation female sire, Safeguard 021.
- Rita 8163 posts a weaning ratio of 100 and a yearling ratio of 100. The dam of Lot 57 carries ultrasound ratios IMF 1@106 and REA 1@103.
- Due 10/6/20 to Deer Valley Growth Fund.



A Plus Blackcap 2151 / The cornerstone third dam of Lot 58.

58

EXAR Blackcap 8281 [NHF]

Birth Date: 8-5-2018

Cow *19178305


Tattoo: 8281

*Varilek Product 2010 04
3F Epic 4631
17950219 Zebo Queen 1072

#*Connealy Final Product
Varilek Pearl 0006 014
#*EF Complement 8088
EXG Blackcap 6247 PPC

#*R/M Ironstone 4047
EXAR Blackcap 4969
+*17936096 +*Wellington Blackcap W713

#CA Future Direction 5321
B/R Ruby of Tiffany 5144
#B/R New Design 036
+A Plus Blackcap 2151

CED	BW	WW	YW	RADG	DMI	YH	SC	DOC										
-1	+1.5	+68	+119	+29	+58	+1.0	+1.63	+16										
HP	CEM	MILK	MW	MH	CW	MARB	RE	FAT										
+9.4	+10	+17	+76	+1.3	+58	+79	+66	+012										
\$M	+39	\$W	+59	\$F	+109	\$G	+59	\$B	+168	\$C	+257							
	CED	BW	WW	YW	ADG	YH	SC	DOC	HP	CEM	MILK	MW	MH	CW	MARB	RE	FAT	TEND
	74	44	60	47	20	49	12	44	80	7	88	43	10	56	18	46	41	17

NON-PARENT FEMALES

Top 1% MH	Top 10% YH	Top 15% YW	Top 25% Marb
Top 3% \$F	Top 15% \$C	Top 20% \$G	
Top 5% \$B	Top 15% CWT	Top 20% RADG	
Top 10% SC	Top 15% WW	Top 25% MCW	

Owned by Optum Angus, Seaman, OH

- Blackcap 8281 is a powerful balanced-trait first calf heifer sired by the proven Express Ranches and Sitz Angus sire, Epic 4631 and stems from an outstanding producing daughter of the former Ray Mar Farms sire, Ironstone 4047 who stems from the one-time Deer Valley Farm donor, Blackcap 2151.
- Blackcap 8281 records a weaning ratio of 117 and a yearling ratio of 106. The dam of Lot 58 posts a BR 1@93 and a YR 2@105.
- Due 9/20/20 to VAR Power Play 7018.

Performance Females



Crazy K Joy 5202 / The \$16,000 full sister to the dam of Lot 59 featured in the Jac's Ranch program.

59

Crazy K Joy 8264

Birth Date: 10-6-2018

Cow *19282955


Tattoo: 8264

*Jindra 3rd Dimension
Jindra Acclaim
*17972810 +*Jindra Blackbird Lassy 1111

#*Jindra Double Vision
Jindras Sapphire J 417
#*Connealy Impression
Jindras Enchantress J 102

#*EXAR Denver 2002B
Crazy K Joy 5196
*18267872 +*EXAR Joy 12571

#*EXAR Upshot 0562B
+Exar Royal Lass 1067
#*Connealy Impression
Basin Joy 566T

CED	BW	WW	YW	RADG	DMI	YH	SC	DOC										
+5	+2.5	+73	+118	+23	+1.08	+1.1	+1.11	+9										
HP	CEM	MILK	MW	MH	CW	MARB	RE	FAT										
+11.6	+11	+34	+96	+8	+59	+54	+67	-.035										
\$M	+48	\$W	+81	\$F	+102	\$G	+52	\$B	+153	\$C	+247							
	CED	BW	WW	YW	DMI	YH	SC	DOC	HP	CEM	MILK	MW	MH	CW	MB	REA	FAT	TEND
	93	98	19	34	65	7	36	79	43	21	14	12	16	8	69	30	5	46

NON-PARENT FEMALES

Top 4% \$W	Top 10% \$F	Top 10% WW	Top 25% \$C
Top 5% Fat	Top 10% CWT	Top 15% \$B	
Top 5% Milk	Top 10% MCW	Top 15% CEM	
Top 5% YH	Top 10% MH	Top 20% YW	

Owned by Optum Angus, Seaman, OH

- Joy 8264 is another balanced-trait first calf heifer sired by the proven multi-trait sire, Acclaim and produced by a direct daughter of the prolific former Crazy K Ranch donor, Joy 12571 sired by the record-selling Denver.
- The dam of Lot 59 records a WR 1@111 and a YR 1@110. Maternal sisters to the dam of Lot 59 include: Joy 5202, the \$16,000 selection of Jac's Ranch; Joy 6341, the \$14,000 selection of Lylester Ranch; Joy 6002, the \$13,000 selection of Express Ranches; Joy 6430 selling to EZ Angus; Joy 6005 selected by Silveira Brothers; and Joy 6434, the selection of Whitlow and Williams.
- Due 8/30/20 to E&B Plus One.

60

Optum's Blackcap 1841

Birth Date: 3-14-2018

Cow *19395962


Tattoo: 1841

GAR Sunrise
*16933958 +*GAR Objective R227

#MCC Daybreak #*Boyd New Day 8005
#MCC Miss Focus 134
#*SS Objective T510 0T26
+GAR 1407 New Design 2983

#*AAR Ten X 7008 SA
Vintage Blackcap 5072
*18067370 +*VAR Blackcap 3053

#*Mytty In Focus
#AAR Lady Kelton 5551
#*EXAR Upshot 0562B
+*Riverbend Blackcap W944

CED	BW	WW	YW	RADG	DMI	YH	SC	DOC										
+8	+2.2	+70	+127	+28	+1.09	+6	-.22	+28										
HP	CEM	MILK	MW	MH	CW	MARB	RE	FAT										
+3.5	+9	+23	+81	+4	+44	+71	+55	-.002										
\$M	+42	\$W	+66	\$F	+85	\$G	+55	\$B	+140	\$C	+224							
	CED	BW	WW	YW	DMI	YH	SC	DOC	HP	CEM	MILK	MW	MH	CW	MB	REA	FAT	TEND
	48	68	69	41	33	97	90	9	100	38	80	62	85	75	51	56	31	65

PROVEN FEMALES

Top 3% YW	Top 10% MCW	Top 20% \$B	Top 25% Fat
Top 4% Doc	Top 10% RADG	Top 20% \$G	Top 25% Marb
Top 5% WW	Top 15% \$W	Top 20% CWT	

Owned by Optum Angus, Seaman, OH

- Blackcap 1841 comes from the heart of the Optum replacement females and blends the proven multi-trait sire, Sunrise with a dam who combines Ten X and Upshot with the \$44,000 foundation Ankony Angus Blackcap, Blackcap W944.
- Due 9/25/20 to Deer Valley Growth Fund.



Riverbend Blackcap W944 /

The \$44,000 Ankony Angus donor and third dam of Lot 60.



Thomas Lady Jet 6322 /
Lot 61

61 Thomas Lady Jet 6322

Birth Date: 2-16-2016

Cow 18463006

Tattoo: 6322

#*Connealy In Sure 8524

#*Mytty In Focus

GAR Sure Fire

Entreena of Conanga 657

+*17328461 +Chair Rock 5050 GAR 8086

#*GAR New Design 5050

Chair Rock Grid Maker 2107

#*Connealy Confidence 0100

Connealy Tobin

Thomas Lady Jet 45202

Becka Gala of Conanga 8281

+18089385 Thomas Lady Jet 0121

#*SS Objective T510 OT26

Thomas Lady Jet 8078

CED	BW	WW	YW	RADG	DMI	YH	SC	DOC									
+15	-1.5	+67	+120	+29	+1.21	+5	+1.12	+23									
HP	CEM	MILK	MW	MH	CW	MARB	RE	FAT									
+10.8	+14	+25	+49	+3	+52	+1.01	+66	+0.10									
\$M	+74	\$W	+76	\$F	+101	\$G	+69	\$B	+171	\$C	+296						
CED	BW	WW	YW	DMI	YH	SC	DOC	HP	CEM	MILK	MW	MH	CW	MB	REA	FAT	TEND
41	56	6	11	95	20	12	9	48	67	30	47	40	9	14	30	76	73

PROVEN FEMALES

Top 1% \$C	Top 5% \$W	Top 10% CWT	Top 20% REA
Top 2% \$B	Top 5% CEM	Top 10% RADG	Top 25% SC
Top 2% CED	Top 5% Marb	Top 10% WW	
Top 4% \$G	Top 10% \$F	Top 10% YW	
Top 4% BW	Top 10% \$M	Top 15% Doc	

Owned by Optum Angus, Seaman, OH

• Lady Jet 6322 is an outstanding combination female with low-birth, Marb. and \$C and she blends the female sire, Sure Fire with a daughter of the calving-ease specialist, Confidence and stems from the proven and productive Thomas Angus Ranch Lady Jet family.

• Lady Jet 6322 records a WR 1@106. The dam of Lot 61 shows an ultrasound IMF ratio 1@101 and is working in the Parker Ranch program.

• Due 9/2/20 to Deer Valley Growth Fund.

62 BJ Fortress 7261

Birth Date: 9-11-2017

Cow +*19165043

Tattoo: 7261

#*Connealy Consensus

#KMK Alliance 6595 I87

KCF Bennett Fortress

Blinda of Conanga 004

+*17259012 *Thomas Patricia 9705

#*SS Objective T510 OT26

+Thomas Patricia 71138

#MCC Daybreak

#+Boyd New Day 8005

BJ Daybreak 3121

#MCC Miss Focus 134

+*17890230 +*BJ Predestined 9176

#*GAR Predestined

+*BJ 1i2 Rito 6115

CED	BW	WW	YW	RADG	DMI	YH	SC	DOC										
+4	+2.1	+76	+135	+30	+1.12	+8	+1.17	+10										
HP	CEM	MILK	MW	MH	CW	MARB	RE	FAT										
+9.3	+10	+26	+73	+7	+58	+90	+1.13	-0.63										
\$M	+53	\$W	+78	\$F	+102	\$G	+77	\$B	+179	\$C	+285							
2025	CED	BW	WW	YW	DMI	YH	SC	DOC	HP	CEM	MILK	MW	MH	CW	MB	REA	FAT	TEND
	72	61	17	21	65	42	86	87	43	30	31	34	26	19	13	4	2	75

PROVEN FEMALES

Top 1% \$B	Top 2% RADG	Top 4% CWT	Top 15% MCW
Top 1% REA	Top 2% WW	Top 5% \$F	Top 20% YH
Top 2% \$C	Top 2% YW	Top 10% MH	
Top 2% \$G	Top 3% \$W	Top 10% Marb	

Owned by Optum Angus, Seaman, OH

• Fortress 7261 is a proven daughter of the low-birth female sire in the Knoll Crest Farms and Select Sires rosters, Fortress and was produced by a dam who combines Daybreak and Predestined.

• The dam of Lot 62 balances a BR 2@95 with a YR 2@101 while showing ultrasound ratios IMF 16@107 and REA 16@99.

• Due 9/24/20 to Bar R Jet Black 5063.



BJ Fortress 7261 /
Lot 62

Proven Producers



BJ 12E7 Rito 4217 /
Lot 63

63

BJ 12E7 Rito 4217 [OSF]

Birth Date: 9-26-2014

Cow #*18189574

Tattoo: 4217

#*Rito Revenue 5M2 of 2536 Pre
Rito 12E7 of 5F56 Rito 5M2
+*17131890 +*Rita 5F56 of 1198 FD

#*GAR Predestined
GAR Precision 2536
#CA Future Direction 5321
+*Rita 1198 of 2536 Rito 616

#*Summitcrest Complete 1P55
BJ Complete 1268
+*17280071 +BJ Objective 8212

#CF Right Design 1802
Summitcrest Elba 1M17
#*SS Objective T510 OT26
+BJ Predestined 6082

CED	BW	WW	YW	RADG	DMI	YH	SC	DOC									
+6	+2.7	+63	+121	+30	+1.45	+6	+7.7	+10									
HP	CEM	MILK	MW	MH	CW	MARB	RE	FAT									
+6.7	+9	+33	+78	+4	+64	+97	+98	+046									
\$M	+36	\$W	+66	\$F	+106	\$G	+69	\$B	+175	\$C	+263						
55	58	55	31	67	78	46	83	95	54	24	42	61	25	28	10	85	92

PROVEN FEMALES

Top 2% \$B	Top 4% \$G	Top 10% Milk	Top 15% WW
Top 2% CWT	Top 10% \$C	Top 10% RADG	
Top 2% REA	Top 10% MCW	Top 10% YW	
Top 4% \$F	Top 10% Marb	Top 15% \$W	

Owned by Optum Angus, Seaman, OH

- Rito 4217 is a balanced-growth and carcass female sired by the longtime Genex roster member, Rito 12E7 and produced by a dam who blends sire, Complete and Objective.
- Rito 4217 records a WR 1@114. The dam of Lot 63 balances a BR 3@96 with a YR 2@100 while showing ultrasound ratios IMF 8@106 and REA 8@106.
- Due 9/25/20 to Deer Valley Growth Fund.

64

Thomas Ester 6182

Birth Date: 2-3-2016

Cow #18462871

Tattoo: 6182

#Sitz Upward 307R
Plattmeyer Weigh Up K360
#*16692552 #Barbara of Plattmeyer 337

#*Connealy Onward
Sitz Henrietta Pride 81M
#GAR Retail Product
Barbara of Plattmeyer 311

#SAV Net Worth 4200
Thomas Ester 9756
+*16614576 #+Thomas Ester 4772

#SAV 8180 Traveler 004
+SAV May 2410
#*Twin Valley Precision E161
#Thomas Ester 4123

CED	BW	WW	YW	RADG	DMI	YH	SC	DOC			
+4	+2.7	+69	+123	+28	+1.18	+9	+7.5	+8			
HP	CEM	MILK	MW	MH	CW	MARB	RE	FAT			
+10.0	+7	+25	+65	+6	+61	+51	+56	+0.15			
\$M	+58	\$W	+67	\$F	+109	\$G	+45	\$B	+154	\$C	+258

PROVEN FEMALES

Top 3% \$F	Top 5% YW	Top 10% RADG	Top 15% YH
Top 3% CWT	Top 10% \$B	Top 15% \$W	Top 20% MCW
Top 5% WW	Top 10% \$C	Top 15% MH	

Owned by Optum Angus, Seaman, OH

- Ester 6182 stems from the most proven and productive family ever developed in the Thomas Angus Ranch performance program, Ester and blends the now-deceased Deer Valley Farm sire, Weigh Up with a direct daughter of the powerful and proven second-generation Thomas Angus Ranch donor, Ester 4772 by Net Worth.
- The dam of Lot 64 is still working in the Thomas Angus Ranch program and records a WR 3@101 and a YR 3@103 while carrying an ultrasound REA ratio 21@101.
- Due 9/27/20 to Deer Valley Growth Fund.



Thomas Ester 6182 / Lot 64

65

SydGen Royal Queen 7587

Birth Date: 8-27-2017

Cow 19036221

Tattoo: 7587

+SydGen Rocky Road 2060
SydGen Rock Star 3461
*17820603 +SydGen Forever Lady 8420

#Rockn D Ambush 1531
SAF Blackbird 6028
#*Connealy Forward
SydGen Forever Lady 2352

*SydGen Dealer 2592
SydGen Royal Queen 4421
#18123225 +SydGen Royal Queen 7536

+*SydGen Dealer 9883
SydGen Di 9494
+SydGen Rocky Road 2060
SydGen Royal Queen 3640

CED	BW	WW	YW	RADG	DMI	YH	SC	DOC									
+5	+2.0	+59	+108	+24	+1.03	+8	+1.26	+9									
HP	CEM	MILK	MW	MH	CW	MARB	RE	FAT									
+14.4	+16	+25	+84	+1.0	+56	+69	+59	+004									
\$M	+46	\$W	+55	\$F	+109	\$G	+54	\$B	+163	\$C	+258						
68	70	37	33	74	20	18	90	12	1	36	15	6	20	25	56	60	61

PROVEN FEMALES

Top 1% CEM	Top 5% CWT	Top 15% SC	Top 25% Marb
Top 2% MH	Top 10% \$C	Top 20% \$G	Top 25% WW
Top 3% \$F	Top 10% MCW	Top 20% YH	
Top 5% \$B	Top 15% HPreg	Top 20% YW	

Owned by Optum Angus, Seaman, OH

- Royal Queen 7587 is a daughter of the featured Sydenstricker Genetics sire, Rock Star 3461 and was produced by a sensational producing daughter of Dealer 2592 while stemming from one of the top families ever developed in the Sydenstricker program.
- The dam of Lot 65 records a WR 4@104 and a YR 3@103 while showing an ultrasound REA ratio 3@101.
- Due 9/25/20 to Bar R Jet Black 5063.



**Thomas Adventure
Girl 6243 / Lot 66**

66

Thomas Adventure Girl 6243

Birth Date: 2-7-2016

Cow 18462952

Tattoo: 6243

#MCC Daybreak

#Boyd New Day 8005

GAR Sunrise

#MCC Miss Focus 134

+*16933958 +*GAR Objective R227

#*SS Objective T510 OT26
+GAR 1407 New Design 2983

#Connealy Lead On

#Connealy Leadtime

Thomas Adventure Girl 5740

Eligence Plus of Conanga

#*15023691 Thomas Adventure Girl 0577

#Sitz Traveler 8180

#Thomas Adventure Girl 6140

CED	BW	WW	YW	RADG	DMI	YH	SC	DOC									
+6	+4	+67	+115	I+24	I+1.24	I+8	I+10	I+22									
HP	CEM	MILK	MW	MH	CW	MARB	RE	FAT									
I+11.0	+9	+26	I+83	I+6	+49	+93	+63	-041									
\$M	+50	\$W	+69	\$F	+83	\$G	+70	\$B	+153	\$C	+249						
85	65	11	13	97	5	62	14	17	60	52	3	9	7	11	9	6	43

PROVEN FEMALES

Top 2% Fat	Top 10% MCW	Top 15% \$C	Top 20% YH
Top 4% \$G	Top 10% Marb	Top 15% CWT	Top 25% BW
Top 10% \$B	Top 10% WW	Top 15% Doc	Top 25% MH
Top 10% \$W	Top 10% YW	Top 20% REA	

Owned by Optum Angus, Seaman, OH

- Adventure Girl 6243 is a direct daughter of one of the most productive females to ever work in the Thomas Angus Ranch program, Adventure Girl 5740 sired by the multi-trait sire, Sunrise.
- Adventure Girl 6243 posts a WR 1@100. The Pathfinder Dam of Lot 66 records a WR 12@102 and a YR 11@103 while carrying an ultrasound REA ratio 10@104.
- Due 9/3/20 to VAR Power Play 7018.

67

Thomas Lucy 56460

Birth Date: 12-13-2015

Cow +*18438042

Tattoo: 56460

#*SAV Final Answer 0035

#Sitz Traveler 8180

KCF Bennett Absolute

SAV Emulous 8145

#*16430795 Thomas Miss Lucy 5152

#*Wulffs Ext 6106

Thomas Miss Lucy 3050

#*Summitcrest Complete 1P55

#CF Right Design 1802

Thomas Lucy 21228

Summitcrest Elba 1M17

#*17450973 Thomas Lucy 9885

#SAV Net Worth 4200

Thomas Lucy 2028

CED	BW	WW	YW	RADG	DMI	YH	SC	DOC									
+11	+3	+61	+113	+26	+108	+7	+94	+10									
HP	CEM	MILK	MW	MH	CW	MARB	RE	FAT									
+8.4	+10	+28	+69	+4	+47	+93	+55	+0.53									
\$M	+42	\$W	+66	\$F	+90	\$G	+61	\$B	+151	\$C	+238						
CED	BW	WW	YW	DMI	YH	SC	DOC	HP	CEM	MILK	MW	MH	CW	MB	REA	FAT	TEND
26	40	41	28	72	28	40	90	63	60	45	37	40	39	25	61	95	57

PROVEN FEMALES

Top 10% \$B	Top 15% \$W	Top 20% CWT	Top 25% BW
Top 10% \$G	Top 15% MCW	Top 20% RADG	Top 25% CEM
Top 10% CED	Top 15% YW	Top 20% WW	
Top 10% Marb	Top 20% \$F	Top 25% \$C	

Owned by Optum Angus, Seaman, OH

- Lucy 56460 is a direct daughter of the Pathfinder Dam featured in the Bornemann Angus program, Lucy 21228 sired by the low-birth female sire, Bennett Absolute.
- The Pathfinder Dam of Lot 67 records a BR 5@99, a WR 5@103 and a YR 4@103 while showing ultrasound ratios IMF 4@101 and REA 4@106.
- Due 9/3/20 to SS Enforcer E812.



**Thomas Lucy 56460 /
Lot 67**



EXAR Fundamental 9186B / Reference Sire A

A EXAR Fundamental 9186B [AMF-CAF-D2F-DDF-M1F-NHF-OHF-OSF-RDF]
Birth Date: 1-21-2019 **Bull *19365169** **Tattoo: 9186B**
 #*Basin Payweight 1682
 Deer Valley Growth Fund
 +*18827828 +*Deer Valley Rita 36113
 #*EXAR Upshot 0562B
 EXAR Royal Lass 4639
 +*17929392 +*Exar Royal Lass 1067
 #*Basin Payweight 006S
 21AR O Lass 7017
 #*Plattemere Weigh Up K360
 +Deer Valley Rita 9457
 #Sitz Upward 307R
 #*EXAR Barbara T020
 #EXAR 263C
 BR Royal Lass 19-132

CED	BW	WW	YW	RADG	DMI	YH	SC	DOC			
+4	+2.0	+81	+145	+3.0	+1.66	+1.0	+0.4	+16			
HP	CEM	MILK	MW	MH	CW	MARB	RE	FAT			
+11.0	+11	+27	+83	+7	+59	+8.4	+5.5	+0.51			
\$M	+63	\$W	+84	\$F	+97	\$G	+57	\$B	+153	\$C	+261

CED	BW	WW	YW	DMI	YH	SC	DOC	HP	CEM	MILK	MW	MH	CW	MB	REA	FAT	TEND
54	60	23	10	86	24	80	61	64	8	73	34	33	32	28	59	86	32



Tex Playbook 5437 / Reference Sire B

B TEX Playbook 5437 [AMF-CAF-D2F-DDF-M1F-NHF-OHF-OSF-RDF]
Birth Date: 8-3-2015 **Bull +*18414912** **Tattoo: 5437**
 #*Basin Payweight 006S
 Basin Payweight 1682
 #*17038724
 #*Summitcrest Complete 1P55
 Rita 1C43 of 9M26 Complete
 +*17131969 +*Rita 9M26 of Rita 5F56 Pred
 #Vermilion Payweight J847
 +Basin Lucy 3829
 21AR O Lass 7017 #HARB Pendleton 765 JH
 21AR O Lass F24A
 #CF Right Design 1802
 Summitcrest Elba 1M17
 #*GAR Predestined
 +*Rita 5F56 of 1I98 FD

CED	BW	WW	YW	RADG	DMI	YH	SC	DOC			
+14	+0	+60	+104	+2.1	+9.3	+1	+9.7	+32			
HP	CEM	MILK	MW	MH	CW	MARB	RE	FAT			
+10.5	+15	+35	+2	-2	+48	+5.2	+3.6	+0.32			
\$M	+92	\$W	+80	\$F	+96	\$G	+41	\$B	+137	\$C	+270

CED	BW	WW	YW	DMI	YH	SC	DOC	HP	CEM	MILK	MW	MH	CW	MB	REA	FAT	TEND
1	3	17	29	88	57	23	3	30	11	3	73	62	32	70	79	93	95

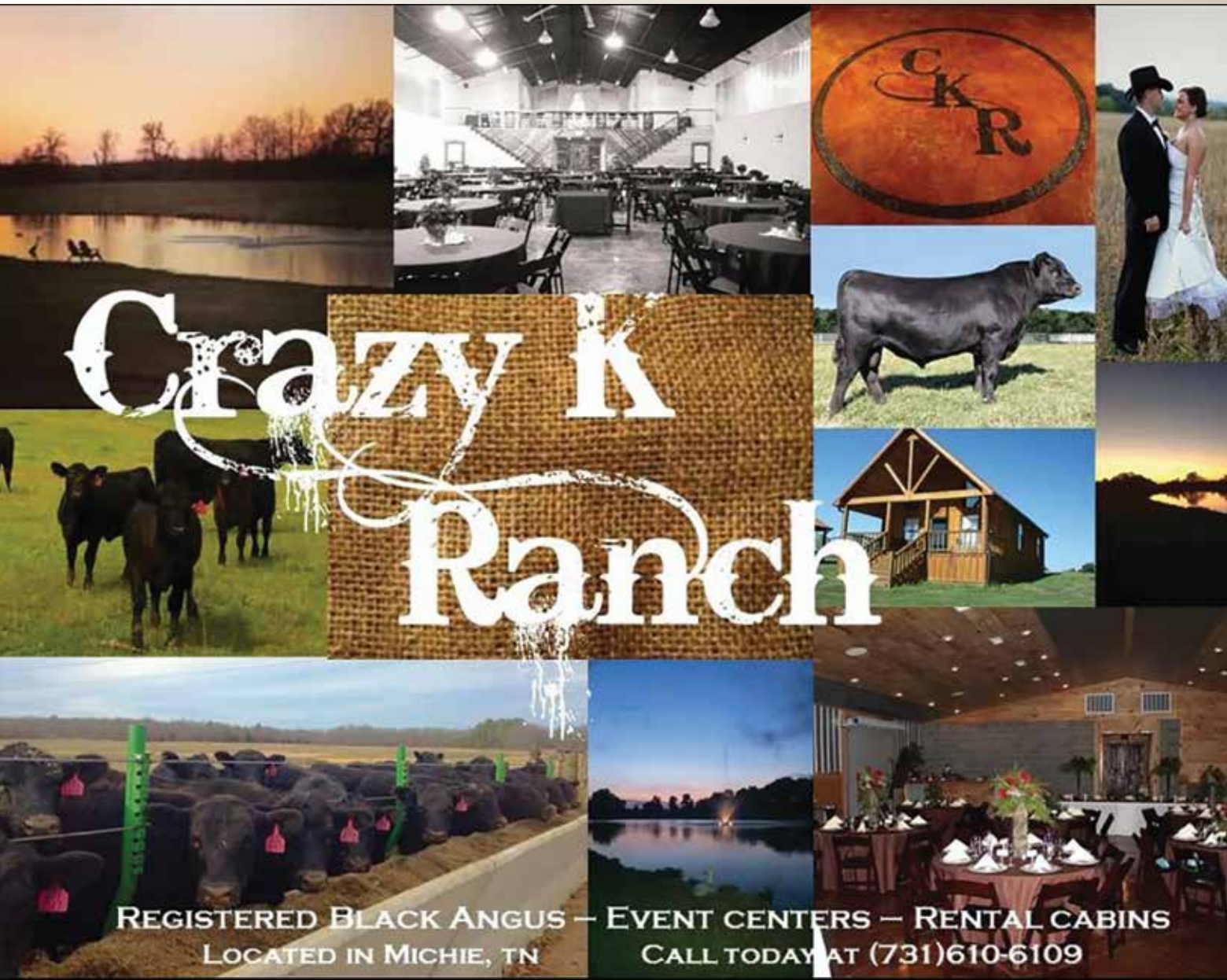


VAR Heritage 5038 / Reference Sire C

C VAR Heritage 5038 [AMF-CAF-D2F-DDF-M1F-NHF-OHF-OSF]
Birth Date: 1-9-2015 **Bull +*18066052** **Tattoo: 5038**
 #*Connealy Consensus 7229
 VAR Generation 2100
 *17171587 +*Sandpoint Blackbird 8809
 #*Summitcrest Complete 1P55
 SJH Complete of 6108 1564
 +*17014597 +*DRMCTR 111 Rita 6108
 #*Connealy Consensus
 Blue Lilly of Conanga 16
 #*Connealy Onward
 +Riverbend Blackbird 4301
 #CF Right Design 1802
 Summitcrest Elba 1M17
 #*Rito 111 of 2536 Rito 616
 +*DRMCTR 2908s Design 2B02

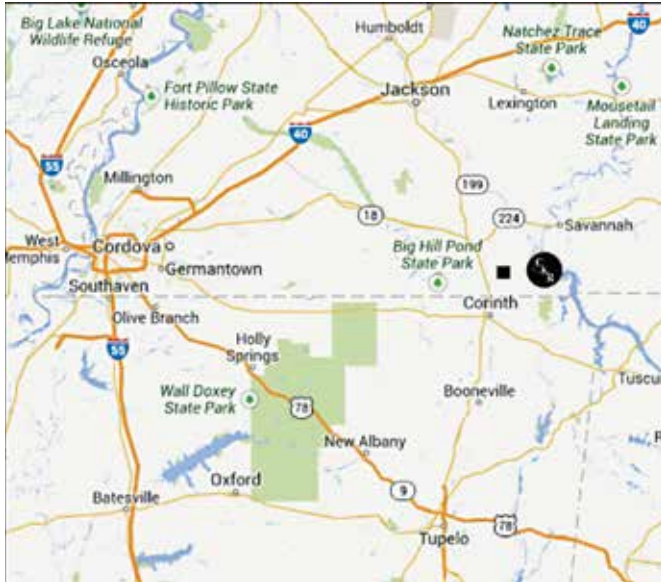
CED	BW	WW	YW	RADG	DMI	YH	SC	DOC			
+4	+2.1	+68	+120	+2.9	+6.2	+9	+1.15	+33			
HP	CEM	MILK	MW	MH	CW	MARB	RE	FAT			
+11.5	+13	+27	+55	+7	+54	+8.5	+1.00	+0.13			
\$M	+68	\$W	+71	\$F	+106	\$G	+66	\$B	+172	\$C	+291

CED	BW	WW	YW	DMI	YH	SC	DOC	HP	CEM	MILK	MW	MH	CW	MB	REA	FAT	TEND
50	35	34	26	43	28	15	4	35	10	53	52	34	21	17	6	48	50



REGISTERED BLACK ANGUS — EVENT CENTERS — RENTAL CABINS
LOCATED IN MICHIE, TN
CALL TODAY AT (731)610-6109

**We have rental cabins
available throughout the year!**



**833 North Prather Rd
Michie, TN 38357**

Crazy K Ranch is located just west of Michie, TN. We are conveniently located near Pickwick Lake and easily accessible to Jackson, TN and Corinth, MS.



Sammy and Sherry Kiser, Owners
833 North Prather Road
Michie, TN 38357
Charlie Adkins, Manager
731-439-7350

crazykranch@hotmail.com
www.crazykranch.com

SALE MANAGED BY:



Larry Cotton	517-294-0777
Ryan Cotton	706-206-8361
Mike Gothard	540-894-1055
Jerry Crenshaw	703-244-4767
Zack Hileman	540-460-2776



Bid Live Online

"Gavel's Down, The Best!"

(516) 366-0734 CCI.live schedule@cci.live

FIRST CLASS MAIL
REQUESTED IN-HOME DATE OF August 12, 2020

PRSRT
FIRST CLASS
U.S. POSTAGE
PAID
St. Joseph, MO
Permit #2017